



Greenview Drive, SW20

£550,000

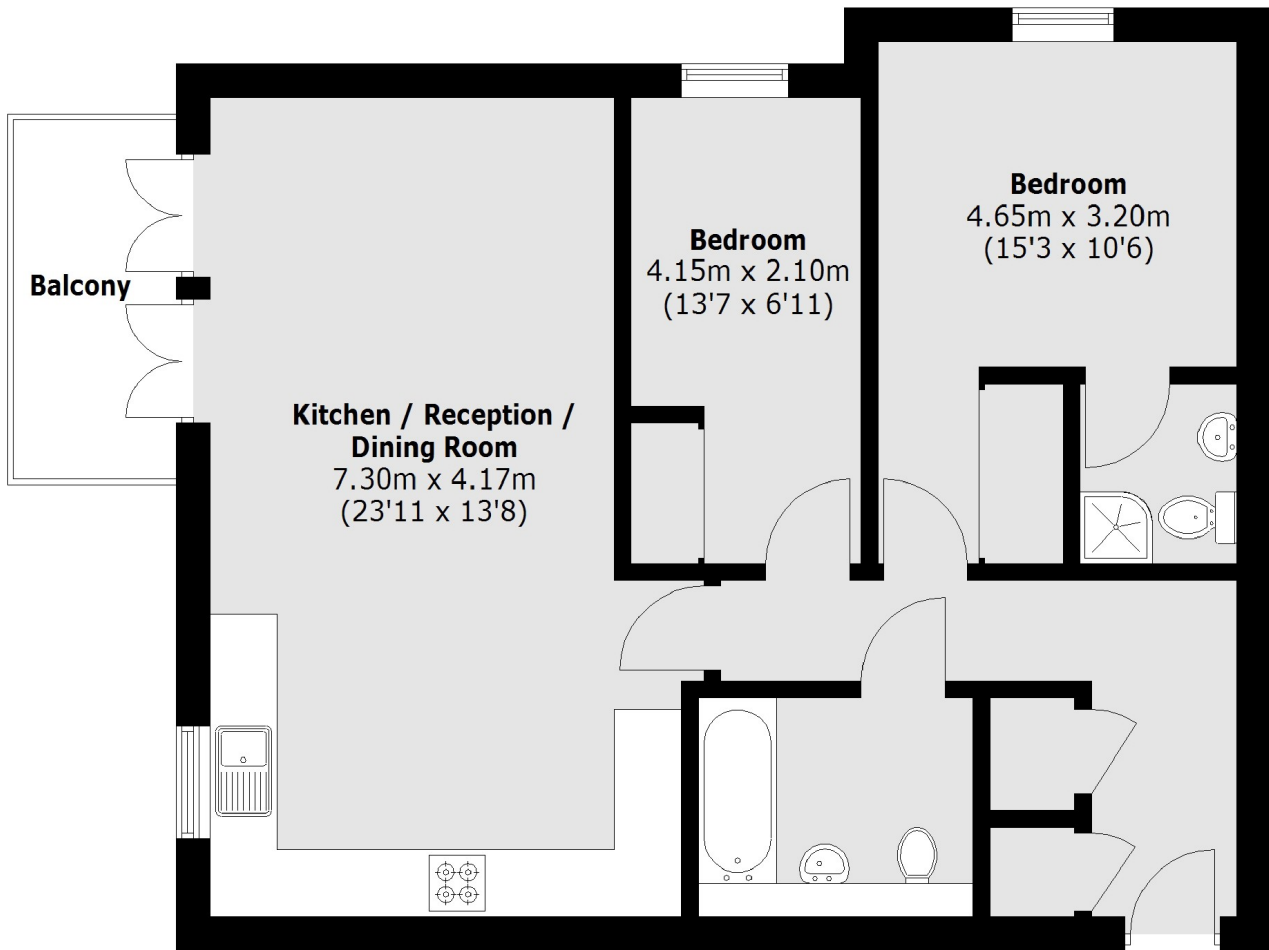
** Move in Q3 2024. A two double bedroom, two bathroom apartment with allocated parking space, balcony and built in wardrobes for each bedroom as standard. The energy efficient German appliances and electric boilers will ensure low running costs for years to come.

Raynes Park is a charming suburban district located in the southwest of London, England. It is part of the London Borough of Merton and offers a unique blend of urban convenience and a green, residential atmosphere.

Features

- Two Double Bedrooms
- Two Bathrooms
- Large Balcony
- Allocated Parking Space
- Eco-Conscious Design
- Low Estimated Bills

Greenview Drive, West Wimbledon, SW20



Fourth Floor

Total area (approx.): 68.9 sq. m (741.6 Sq. ft)

Balcony: 4.6 sq. m (49.5 Sq. ft)