



Knights Hill, SE27

£800,000

A three/four bedroom family home with just under 1,400 square feet of living space including large kitchen diner. The green open spaces of Streatham Common are also nearby with 62 acres of green open space to enjoy included the well known Rookery.

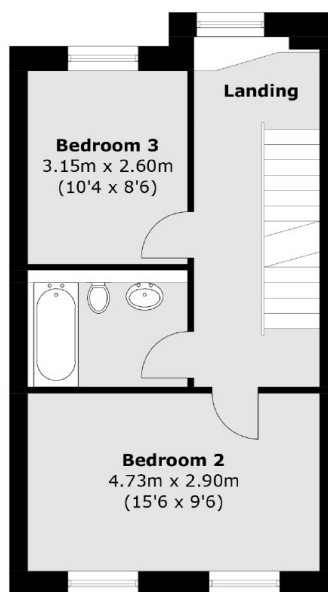
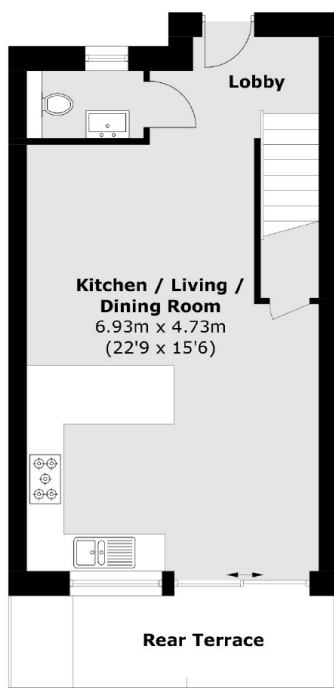
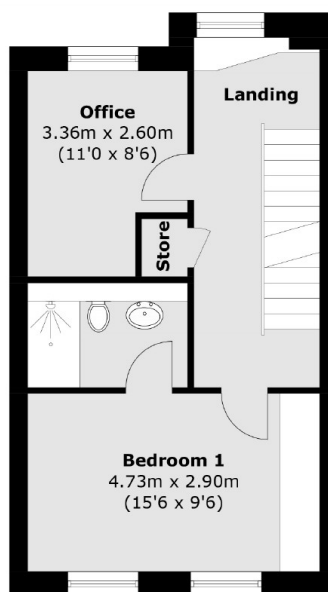
**** Final Two Houses Remain! ****

Knights Hill is a secluded and very private Mews development set back from the road behind secure electric gates. It is a short walk from West Norwood Station with connections into London Victoria & London Bridge.

Features

- Three/Four Bedrooms
- Private Mews Development
- 'Pod' Room - Study/Studio
- Estimated EPC Rating 'A'
- Air Source Heat Pump
- Solar Panel System

Knights Hill, London, SE27



To Garden
Ground Floor

Total area (approx.): 128.9 sq. m (1,388 sq. ft)
Terrace area : 30.5 sq. m (328.3 sq. ft)