



## Hartfield Road, SW19

### £450,000

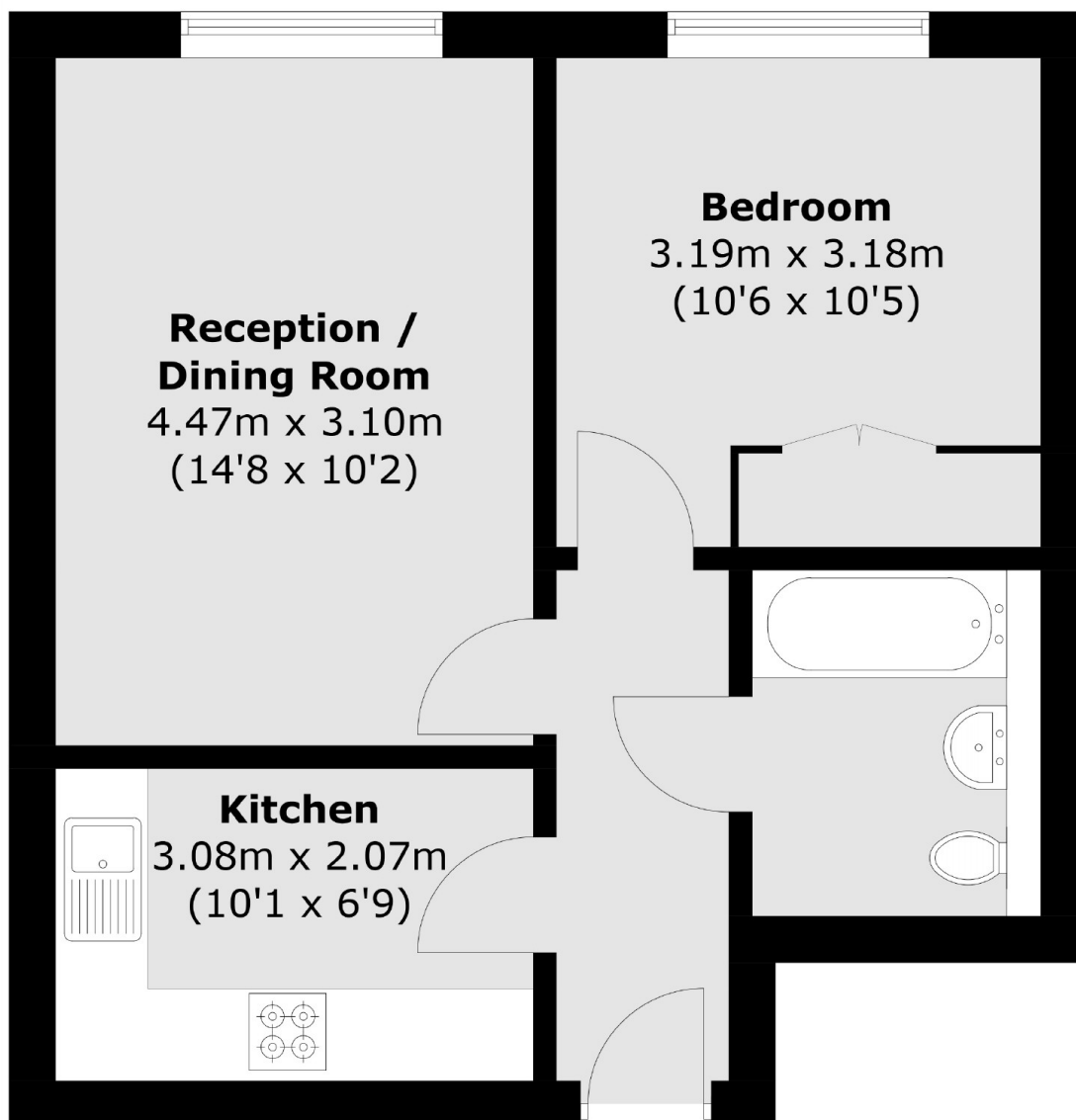
A first floor one double bedroom apartment at the rear of the building facing over the large communal garden. There is a separate kitchen, rare for newly built apartments, a large lounge with a Juliet balcony and a separate double bedroom with built-in wardrobes.

Hartfield Road is located just off of The Broadway, equidistant to both the district line (Wimbledon) and northern line (South Wimbledon) with shops, bars and delicious restaurants are all on your doorstep, whilst being in the catchment for outstanding schools.

### Features

- Open Plan Kitchen/Diner
- One Double Bedroom
- Low Service Charges
- High Specification Finish
- Secure Building With Lift
- Highly Energy Efficient
- Low Running Costs
- Move In Q3 2024

# Hartfield Road, Wimbledon, SW19



## First Floor

Total area (approx.): 40.4 sq. m (434.9 sq. ft)