

East Road, SW19

£800,000

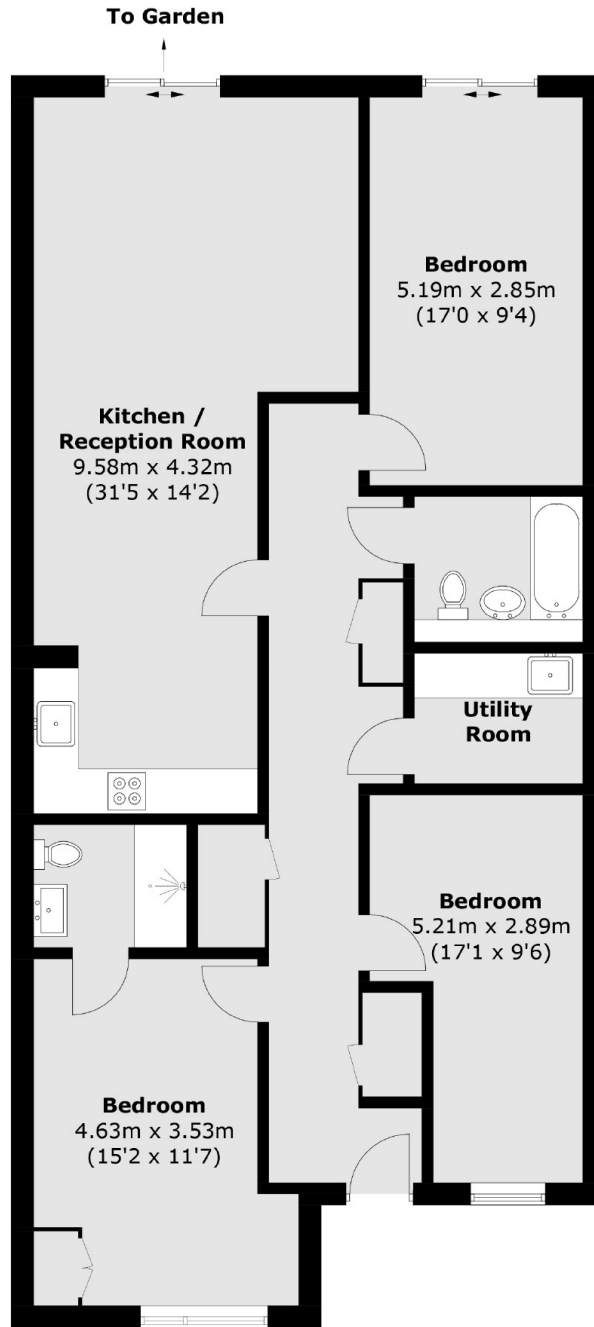
A three double bedroom maisonette measuring over 1,200 square feet all on one floor with two bathrooms, a utility room and a private garden. There are highly energy efficient appliances, underfloor heating and an air source heat pump. Allocated parking is available.

East Road is a tucked away location with the benefit of being well located but also a quiet area close to Colliers Wood Northern Line. The green open spaces of the Wandle Meadow Nature Park and Haydons Road Recreation Ground are also very nearby.

Features

- Three Double Bedrooms
- Maisonette Apartment
- Two Bathrooms + Utility Room
- Allocated Parking Space **
- Private Garden
- Private Resident Lounge & Gym

East Road,
Wimbledon, SW19



Ground Floor

Total area (approx.): 113.4 sq. m (1,220.6 sq. ft)