

East Road, SW19

£845,000

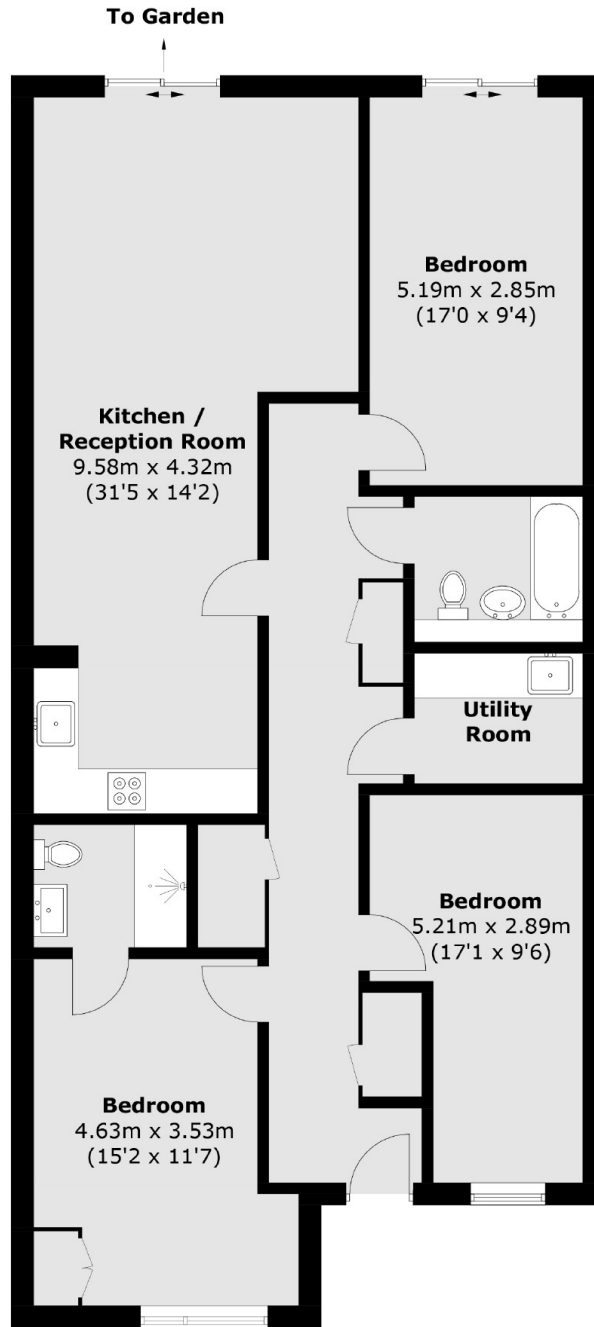
A three double bedroom maisonette measuring over 1,200 square feet all on one floor with two bathrooms, a utility room and a private garden. There are highly energy efficient appliances, underfloor heating and an air source heat pump. Allocated parking is available.

East Road is a tucked away location with the benefit of being well located but also a quiet area close to Colliers Wood Northern Line. The green open spaces of the Wandle Meadow Nature Park and Haydons Road Recreation Ground are also very nearby.

Features

- Three Double Bedrooms
- Maisonette Apartment
- Two Bathrooms + Utility Room
- Allocated Parking Space **
- Private Garden
- Private Resident Lounge & Gym

East Road,
London, SW19



Ground Floor

Total area (approx.): 113.4 sq. m (1,220.6 sq. ft)

Dexters

New Homes South London
12 The Broadway
London
SW19 1RF
Sales
020 8674 4555

Energy Rating: . We aim to make our particulars both accurate and reliable. However they are not guaranteed; nor do they form part of an offer or contract. If you require clarification on any points then please contact us, especially if you're traveling some distance to view. Please note that appliances and heating systems have not been tested and therefore no warranties can be given as to their good working order.

 **RICS** | Regulated
Estate Agent
and Letting Agent

dexters.co.uk