

Aveline Street, SE11

£899,999

A fantastic apartment, individually designed with plenty of storage including two bedrooms, two bathrooms, and a large balcony. There is an incredible specification throughout with an energy efficient design and low running costs in mind. All with a share of the freehold.

Ready for occupation immediately and available to view now - Show home CGI's have been used to display the finishes.

Fantastically connected in every direction, Aveline House is an ideal location regardless of where you're heading. The vibe of central London is less than 10 minutes away, while the city's largest airports are all reached within an hour.

Features

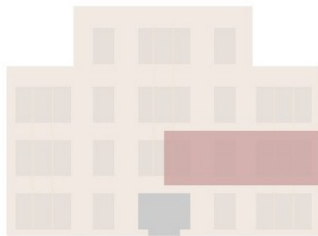
- Two Double Bedrooms
- Two Bathrooms
- Second floor Apartment
- Siemens Appliances
- Large Balcony
- Communal Roof Garden
- Share Of The Freehold
- Energy Efficient Design
- Low Running Costs
- Air Source Heat Pump

Aveline Street, Kennington, SE11

Apartment Four

First Floor
2 Bedroom | 2 Bathroom
939.7 sqft | 87.3 sqm

	m	ft
Kitchen & Living	3.8 x 8.3	12.5 x 27.2
Bedroom 1	4.5 x 5.1	14.8 x 16.7
Ensuite	1.8 x 1.7	5.9 x 5.6
Bedroom 2	4.7 x 4.7	15.4 x 15.4
Bathroom	2.0 x 2.4	6.6 x 7.9
Lobby	3.1 x 8.2	10.2 x 26.9
Balcony	6.3 sqm	67.8 sqft



AVELINE HOUSE

AVELINE HOUSE