



## Wyfold Road, SW6

### £800,000

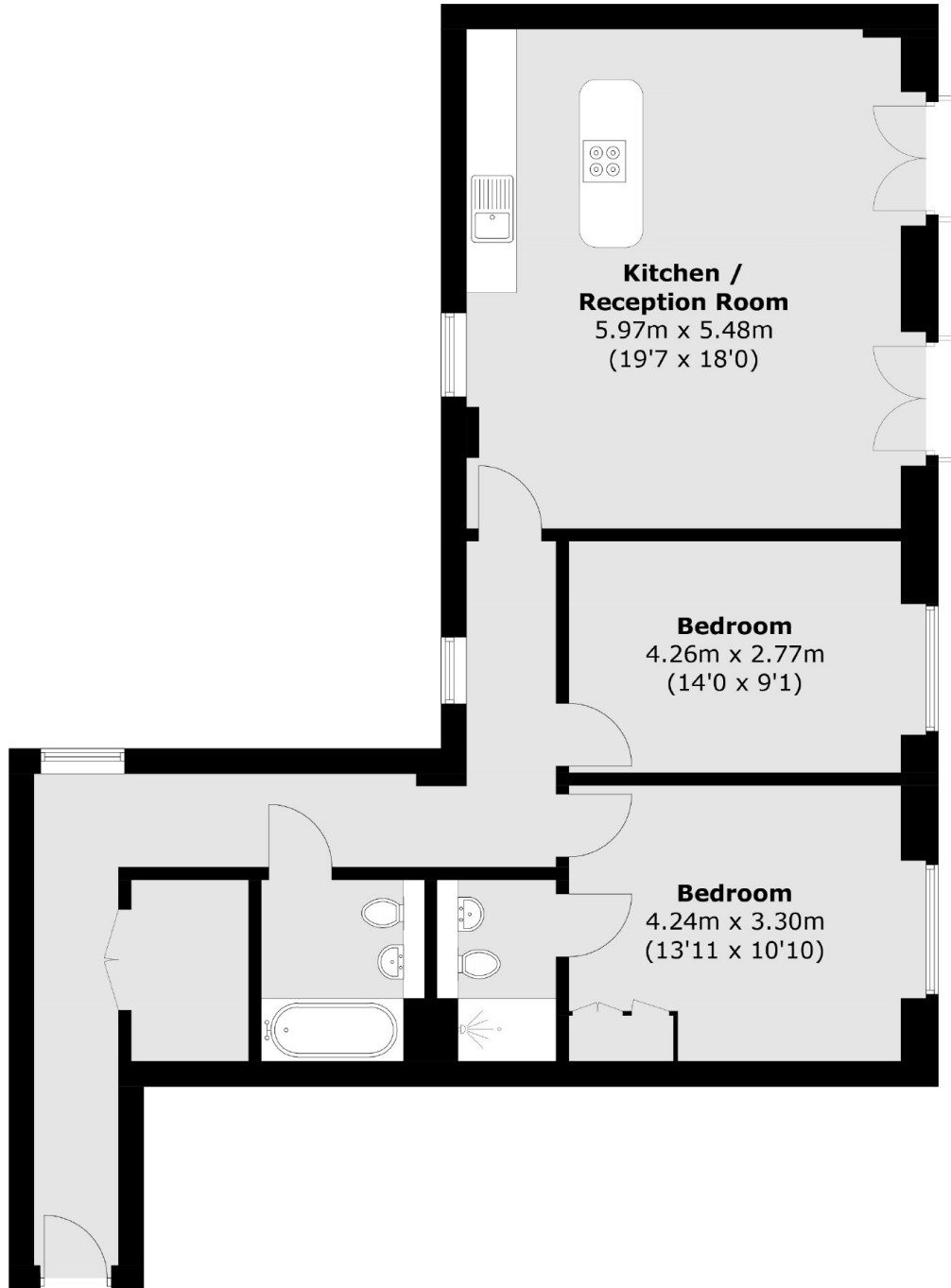
A large lateral apartment with a high-end kitchen, including Siemens, wine cooler and Corian worktops. Additionally there are two bedrooms, two bathrooms and a large utility room. Further benefits include a long lease, parking is available by negotiation.

Excellent public transportation close by, including the District and Piccadilly Line, accessed by stations at Hammersmith, Barons Court and Earls Court. Parsons Green and Fulham Broadway are the nearest tube stations.

### Features

- Two Double Bedrooms
- Two Bathrooms
- High End Finish
- Large Lateral Layout
- Underground Parking Available
- Lift To All Apartments
- Underfloor Heating
- Bespoke Metris Kitchen
- Individual Wine Coolers
- Fulham/Hammersmith Location

# Wyfold Road, Fulham, SW6



Total area (approx.): 86.1 sq. m (926.8 sq. ft)