



## Elder Road, SE27

£475,000

A two bedroom, one bathroom apartment within this beautiful Victorian conversion with a high specification throughout. There is a separated kitchen/dining space which will appeal to a lot of buyers, with the separated lounge leading to the private roof terrace.

Specification-wise, the property comes fully fitted with a beautiful fitted Hacker Concept 130 Kitchen, made in German, along with integrated Italian Smeg appliances, a washer dryer, dishwasher, oven, hob, extractor as well as fridge with ice box.

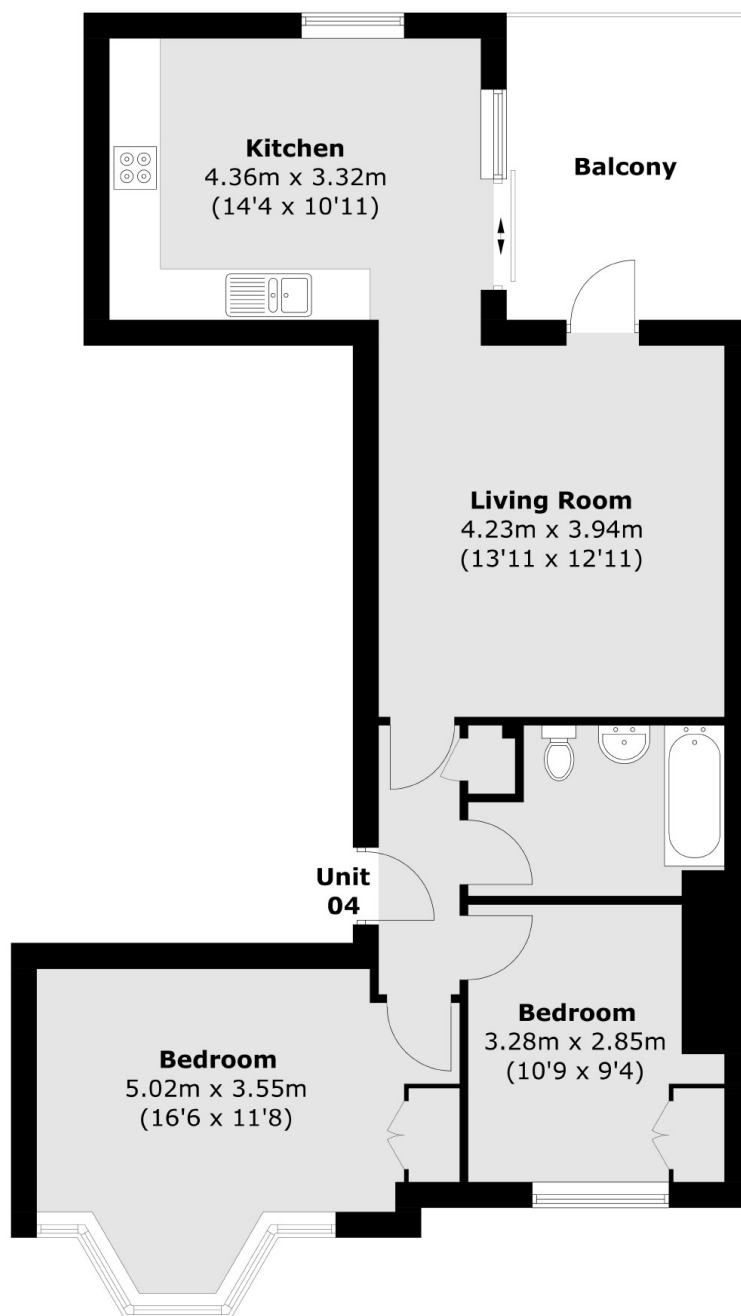
Situated directly opposite Norwood Park with views across the hilly 33-acre municipal green space with wooded and play areas, a cafe and panoramic city views.

The Park Tavern is a beautiful old Victorian pub building, having first opened it's doors in 1867 and being situated directly opposite Norwood Park. Elder Road is a short walk away from West Norwood Station offering connections to London Victoria and London Bridge. Shops, and restaurants are all located on West Norwood High Street and Streatham Common is a great park to enjoy nearby.

### Features

- Two Bedrooms
- Separated Kitchen/Dining
- Separated Lounge
- South-West Roof Terrace
- Share Of The Freehold
- High Specification Kitchen

# Elder Road, West Norwood, SE27



## First Floor

Total area (approx.): 70.0 sq. m (753.5 sq. ft)  
Balcony area : 9.9 sq. m (106.5 sq. ft)