

Arklow Road, SE14

£400,000

Located on the fourth floor, this one-bedroom duplex apartment offers a private terrace with stunning city skyline views. Astra House features well-designed bathrooms, including high-quality quartz counter tops and attractive parquet flooring throughout. The apartment's open-plan layout provides a spacious living area. The kitchen is equipped with Bosch appliances, sleek handleless cupboards, and undercounter lighting, making it both functional and stylish. The bedroom enjoys plenty of natural light and soft luxury carpets.

Arklow Road is conveniently located in one of South London's busiest commuter belts, within easy access to New Cross & Deptford Station. The green open spaces of both Deptford & Greenwich Park are also very nearby.

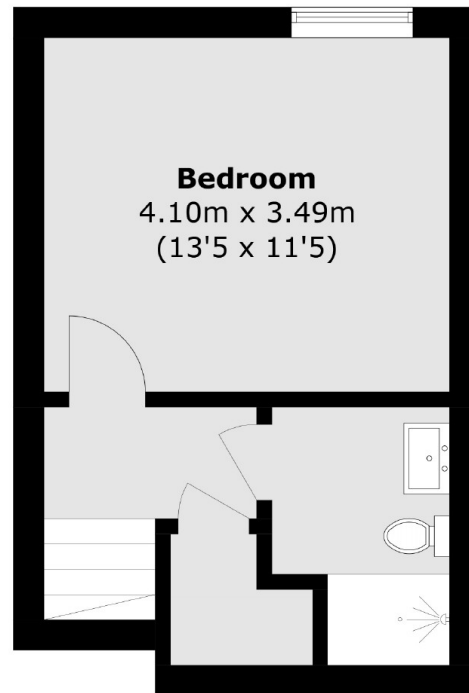
Features

- One Bedroom
- Penthouse Collection
- High Energy Efficiency
- Perfect First Time Buy
- Great Buy To Let Investment
- Large Communal Roof Terrace

Arklow Road,
New Cross, SE14



Fourth Floor



Upper Level Fourth Floor

Total area (approx.): 53.7 sq. m (578.0 sq. ft)
Balcony: 8.6 sq. m (92.6 sq. ft)