

Conyers Road, SW16

£500,000

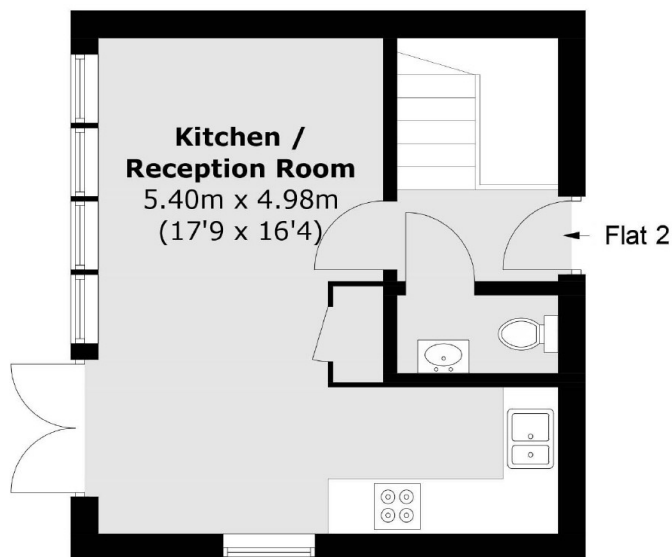
A two bedroom duplex apartment with one bathroom and additional separate W.C. As you enter on the ground floor you have a large kitchen / reception room which is open plan. On the lower floor you have two double bedrooms and a large bathroom.

Conyers Road is a just a short walk from Streatham station and town centre with trains providing Southern and Thames link services with direct access into London.

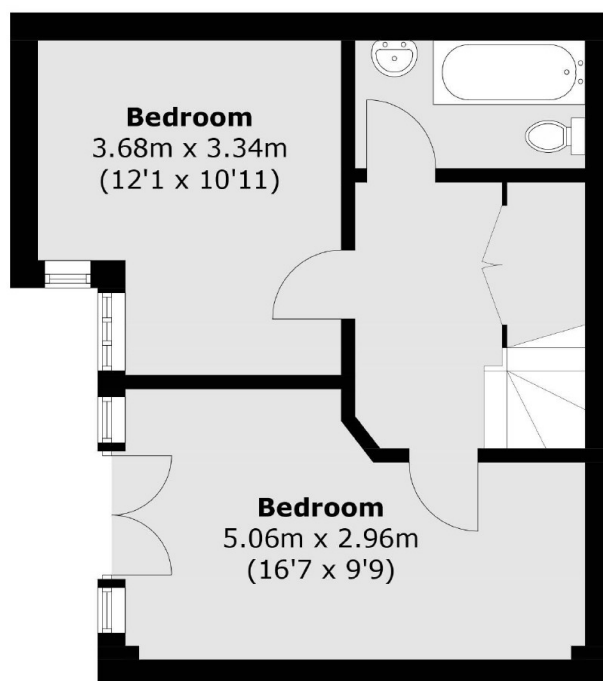
Features

- Two Large Bedrooms
- Bathroom + Additional W.C
- No Chain - Quiet Road
- Near to Streatham Common
- Low Running Costs
- Energy Efficient

Conyers Road,
, SW16



Ground Floor



Basement

Total area (approx.): 63.5 sq. m (683.4 sq. ft)
(Including Basement)