



Earlsfield Road, SW18

£825,000

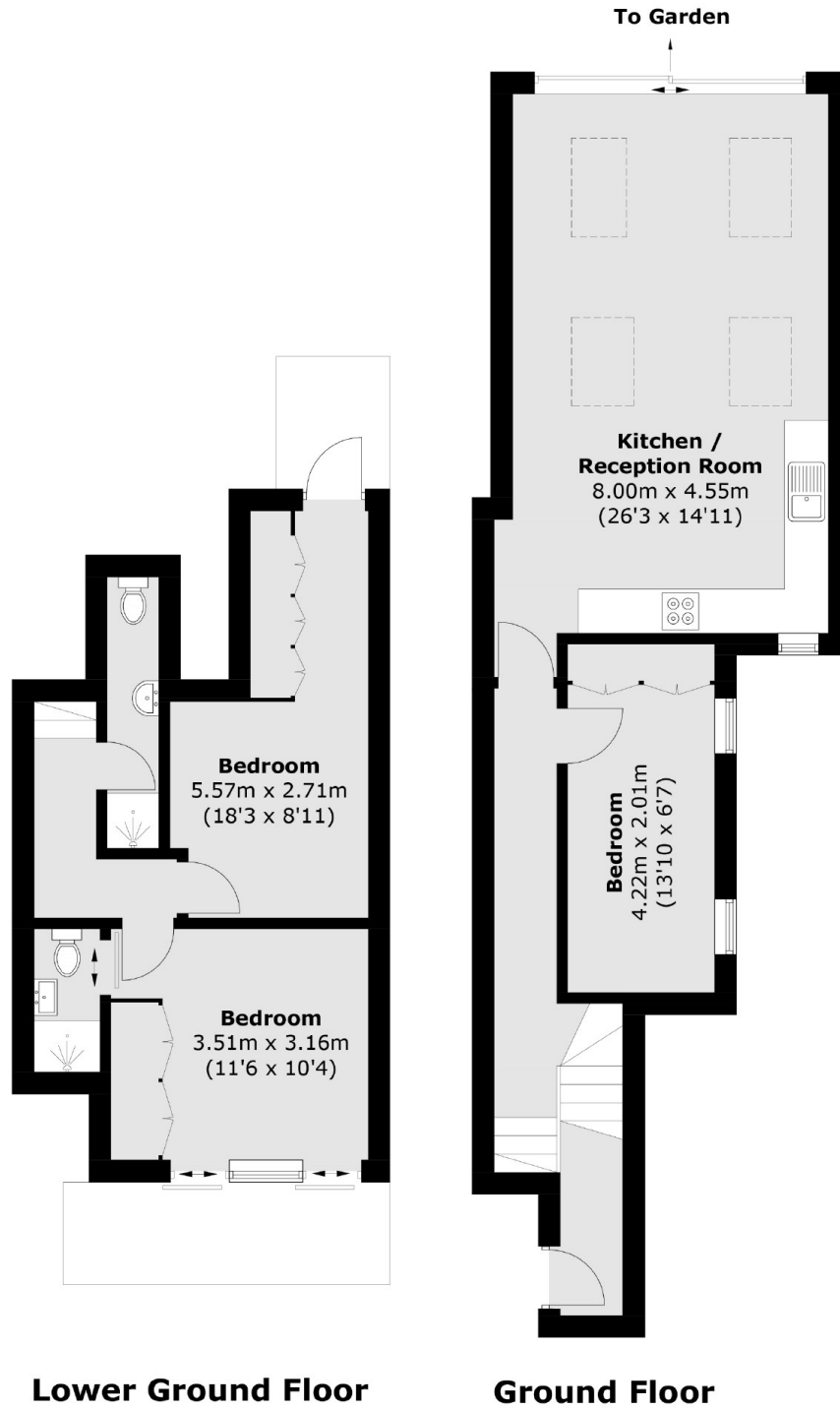
A three bedroom, two bathroom split level with large private garden and two patios. Split over two generous floors spanning just under 925 square foot. There is an incredibly high specification throughout including built in wardrobes all with a share of the freehold.

Earlsfield is a charming and vibrant area located in the southwest London borough of Wandsworth. This residential neighbourhood exudes a unique blend of urban convenience and suburban tranquillity, making it a popular choice for families and young professionals alike. With its tree-lined streets, Victorian and Edwardian architecture, and welcoming community atmosphere, Earlsfield offers a sense of warmth and homeliness.

Features

- Three Double Bedrooms
- Two Bathrooms
- Share Of The Freehold
- Private Garden
- Victorian Period Conversion
- Parking Permit Available

Earlsfield Road,
London, SW18



Total area (approx.): 86.2 sq. m (927.8 sq. ft)