



## Carnation Way, SW8

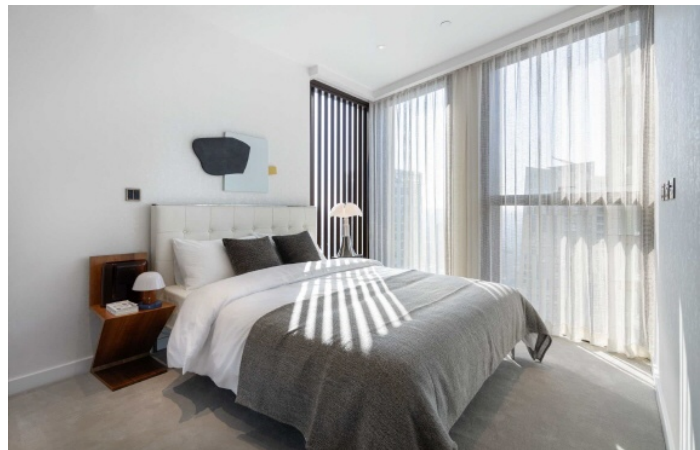
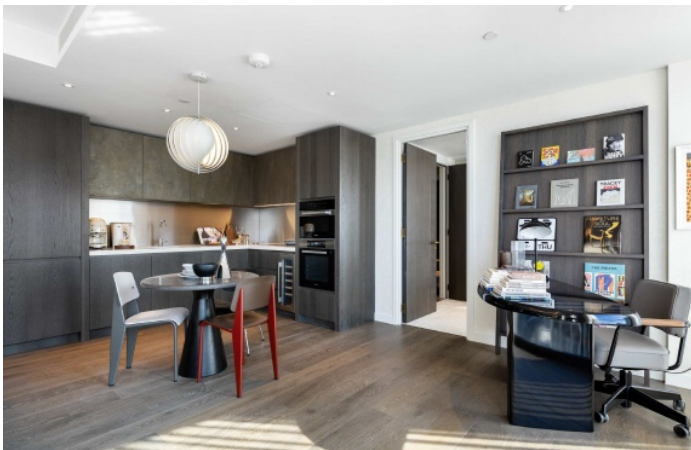
£7,053,000

A five-bedroom, four-bathroom apartment with River & City views. Occupying half of the entire 35th floor, this large lateral apartment has River & Canary Wharf Skyline views. Expanding to over 3,000 square feet.

Thames City is conveniently located for transport via Vauxhall Underground (Victoria Line) and Overground with the many facilities of Battersea Power Station right around the corner. Green open spaces are easily accessible at both Vauxhall & Battersea Park.

### Features

Swimming Pool/Gym  
Five Bedrooms  
Four Bathroom  
Incredible Location - Nine Elms  
Close To Transport - Vauxhall  
Green Open Spaces Nearby  
Unrivalled Amenities



Carnation Way, SW8





# Carnation Way, Vauxhall, SW8



## Dexters

New Homes South London  
12 The Broadway  
London  
SW19 1RF  
Sales  
020 8674 4555

Energy Rating: . We aim to make our particulars both accurate and reliable. However they are not guaranteed; nor do they form part of an offer or contract. If you require clarification on any points then please contact us, especially if you're traveling some distance to view. Please note that appliances and heating systems have not been tested and therefore no warranties can be given as to their good working order.

 **RICS** | Regulated  
Estate Agent  
and Letting Agent

[dexters.co.uk](https://www.dexters.co.uk)