



## Carnation Way, SW8

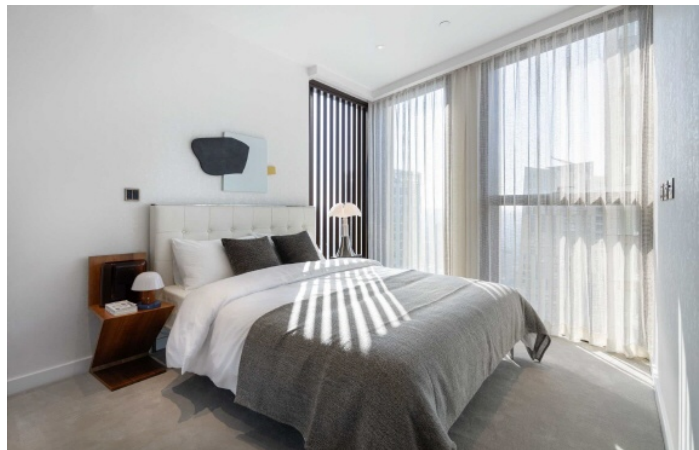
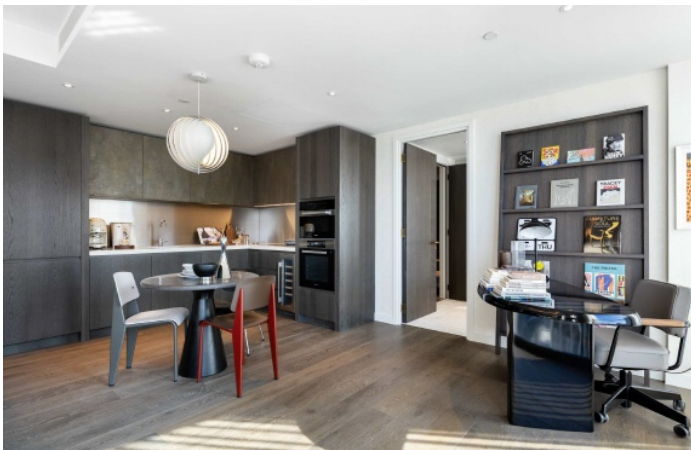
£7,696,000

A five-bedroom, four-bathroom apartment with River & City views. Occupying half of the entire 40th floor, this large lateral apartment has River & Canary Wharf Skyline views. Expanding to over 3,000 square feet.

Thames City is conveniently located for transport via Vauxhall Underground (Victoria Line) and Overground with the many facilities of Battersea Power Station right around the corner. Green open spaces are easily accessible at both Vauxhall & Battersea Park.

### Features

Five Bedrooms Four Bathroom  
Incredible Location - Nine  
Elms  
Close To Transport - Vauxhall  
Green Open Spaces Nearby  
Unrivalled Amenities  
Swimming Pool/Gym



Carnation Way, SW8





# Carnation Way, London, SW8

