

Conyers Road, SW16

£575,000

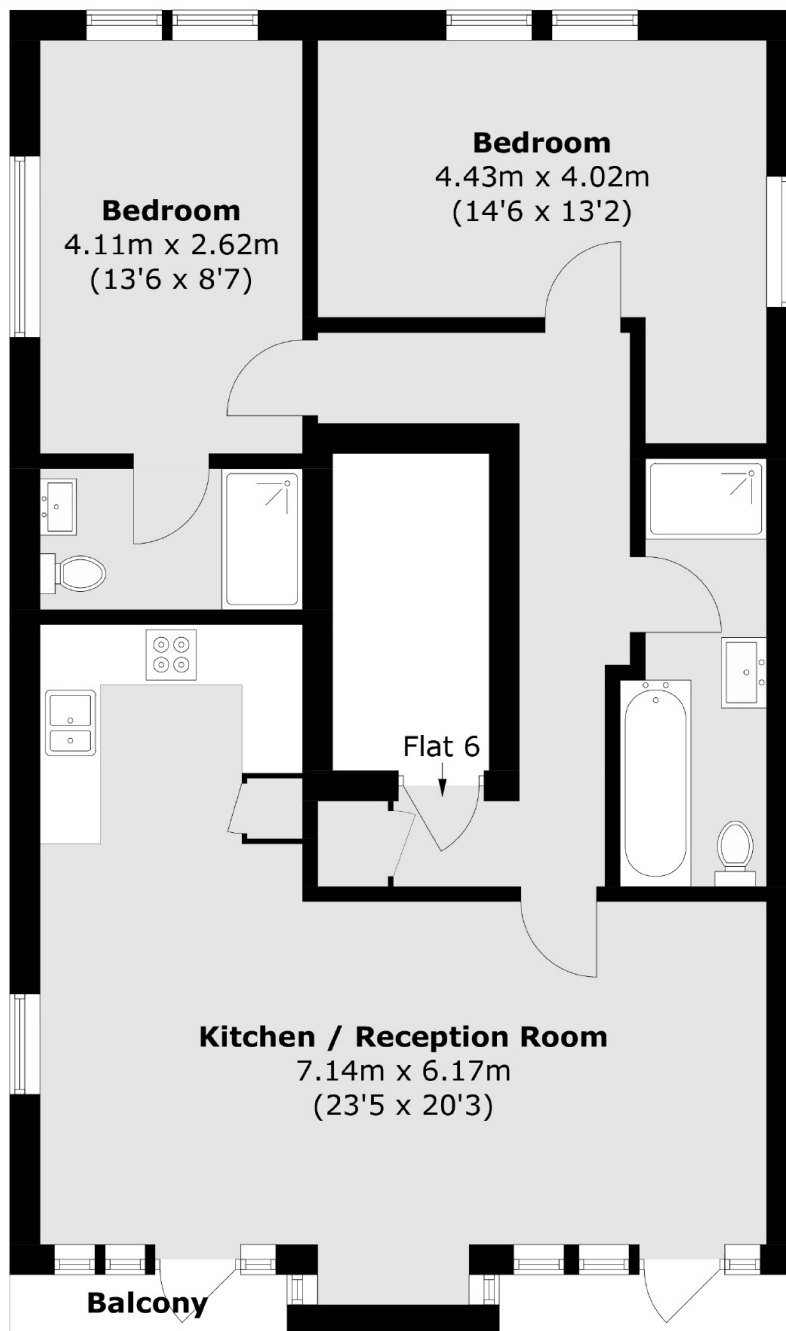
A large lateral apartment with over 850 square feet of living space. There are two bedrooms, two bathrooms and two balconies. With windows on all four corners of this property there is plenty of light throughout, with no onward chain this property is ready to move into!

Conyers Road is just a short walk from Streatham station and town centre with trains providing Southern and Thames link services with direct access into London. The green open spaces of Streatham Common with The Rookery Gardens as also very nearby.

Features

- Two Double Bedrooms
- Two Bathrooms
- Two Balconies
- No Chain
- Underfloor Heating
- Communal Gardens

Conyers Road,
, SW16



Second Floor

Total area (approx.): 79.3 sq. m (853.6 sq. ft)
Balcony : 1.6 sq. m (17.2 sq. ft)