

## Blenheim Road, SW20

### £470,000

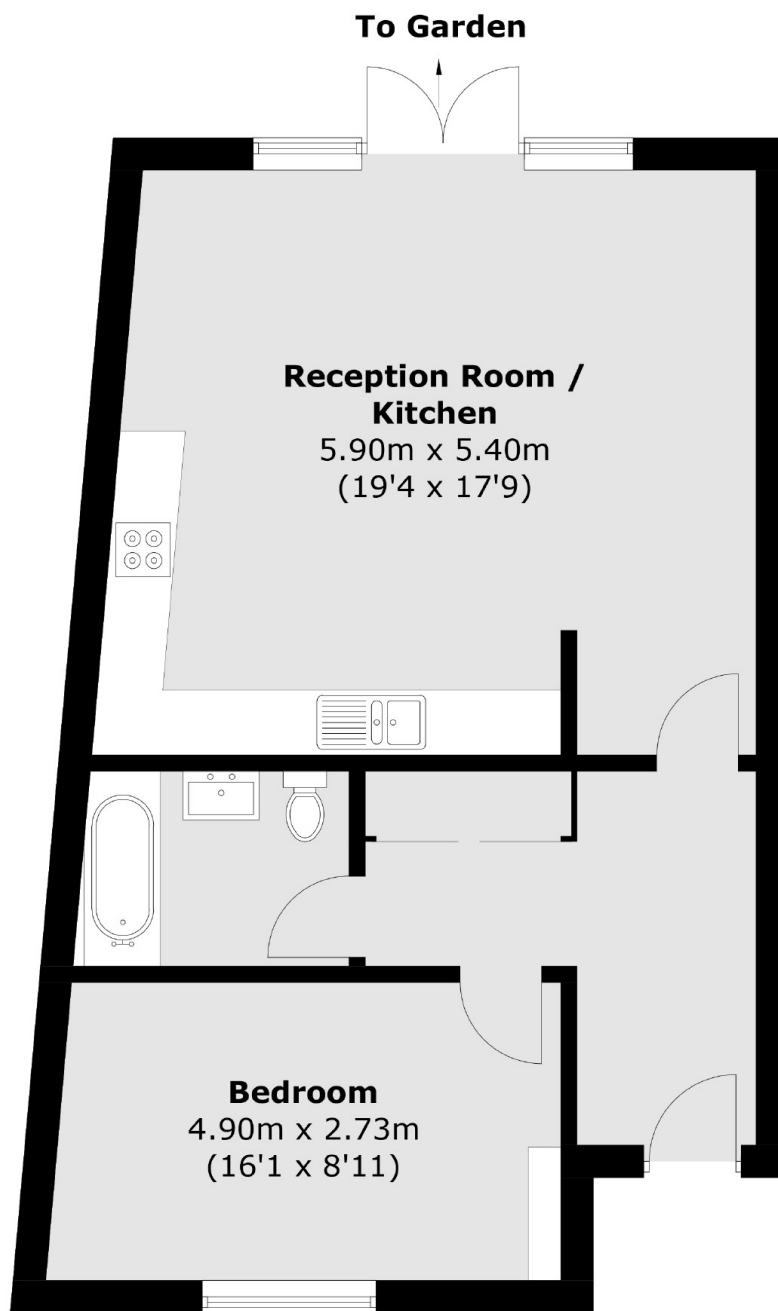
Rare to the market, is a newly renovated bungalow, the property has a private garden, a large bedroom, and an open open-plan kitchen/reception room with patio doors to a large private garden, as well as a communal garden. All with an allocated parking space.

This property is nestled within the peaceful embrace of Blenheim Road which is a cul-de-sac road discreetly positioned off Grand Drive SW20. It is nearby to Raynes Park Station which has a great service into Wimbledon, Clapham and Waterloo.

### Features

- Allocated Parking Space
- One Bedroom Bungalow
- Share Of The Freehold
- Private Garden
- High Specification Throughout
- Quiet Location

# Blenheim Road, Raynes Park, SW20



## Ground Floor

Total area (approx.): 60.6 sq. m (652.3 sq. ft)