

## Hartfield Road, SW19

£800,000

An extremely large two double bedroom apartment. With two terraces. Each bedroom has an en-suite shower room with built-in wardrobes and access to private outside space. The huge kitchen/dining room has access to an external kitchen/dining/BBQ area.

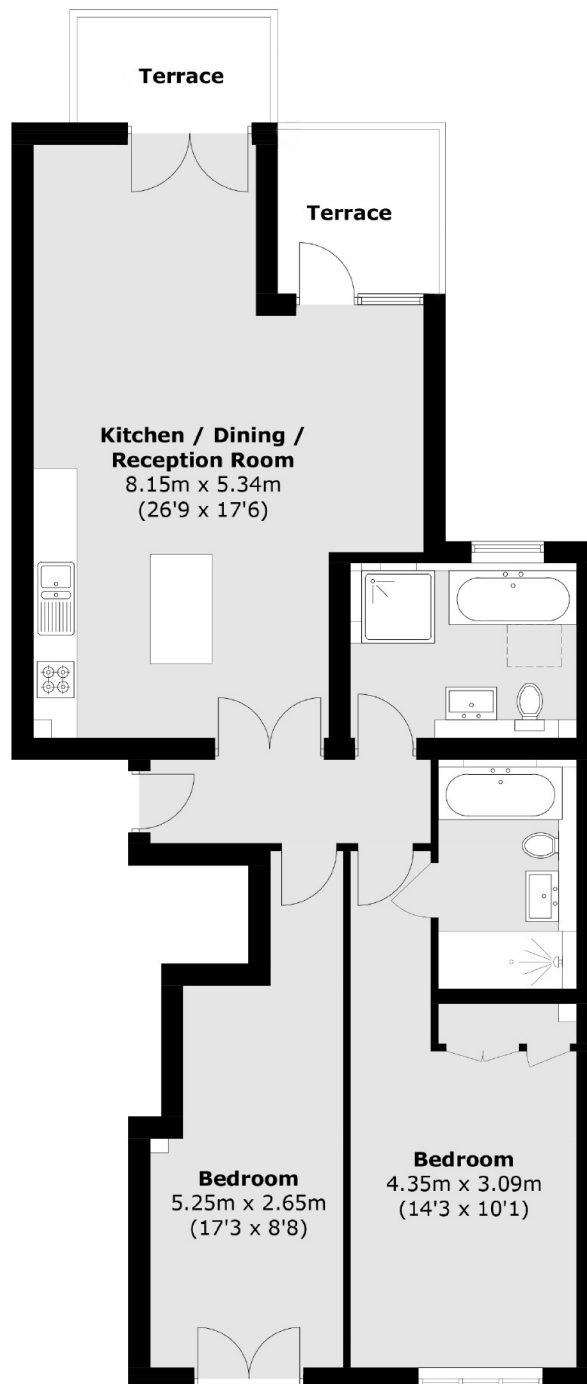
Please note: The photographs shown are from a previous development built by the same developer.

Wimbledon is a location where life balance is part of the fabric a bustling town centre, a stylish village, a beautiful common, a generous park with its very own lake and exceptional interconnections.

### Features

- Two Large Terraces
- Fitted Wardrobes
- Large Communal Garden
- Very Close To The Station
- 1080 Square Feet Internal
- Private Outside Space

Hartfield Road,  
Wimbledon, SW19



Total area (approx.): 90.5 sq. m (974.1 sq. ft)  
Terrace : 7.9 sq. m (85.0 sq. ft)