



Blenheim Road, SW20

£575,000

A two bedroom ground floor garden flat with an allocated parking space. Located within an Edwardian conversion, there is a share of the freehold, a long lease and no chain. There are a number of parks nearby and there is also a communal garden and a bike store.

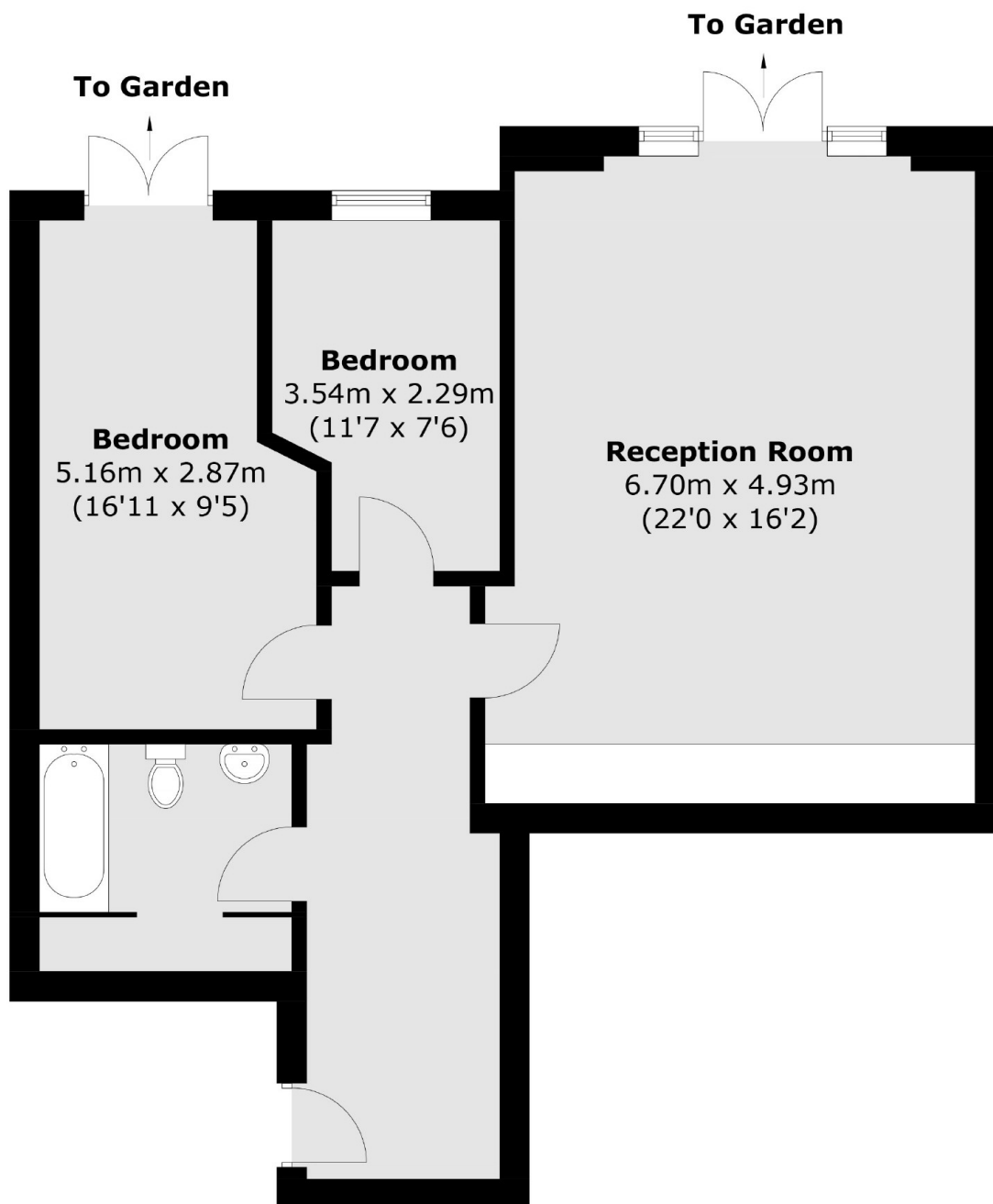
This small exclusive development includes just six flats and two brand new 3/4 bedroom freehold houses with fantastic specifications located on a quiet road with just nine houses on the street.

Blenheim Close is a quiet cul-de-sac road tucked away just off of Grand Drive SW20. It is nearby to Raynes Park Station which has a great service into Wimbledon, Clapham and Waterloo. The A3 is also just around the corner offering similar routes but by car.

Features

- Two Bedrooms Private Garden
- Share Of The Freehold
- Communal Garden
- High End Specification
- Share Of The Freehold
- Allocated Parking Space

Blenheim Road, Raynes Park, SW20



Total area (approx.): 71.3 sq. m (767.5 sq. ft)