



Hartfield Road, SW19

£550,000

A first floor one double bedroom apartment in a prime location in Wimbledon Town Centre. There is an open-plan kitchen/diner, a large balcony to the rear and communal gardens on the ground floor. The property is ready for occupation in Q2 2024.

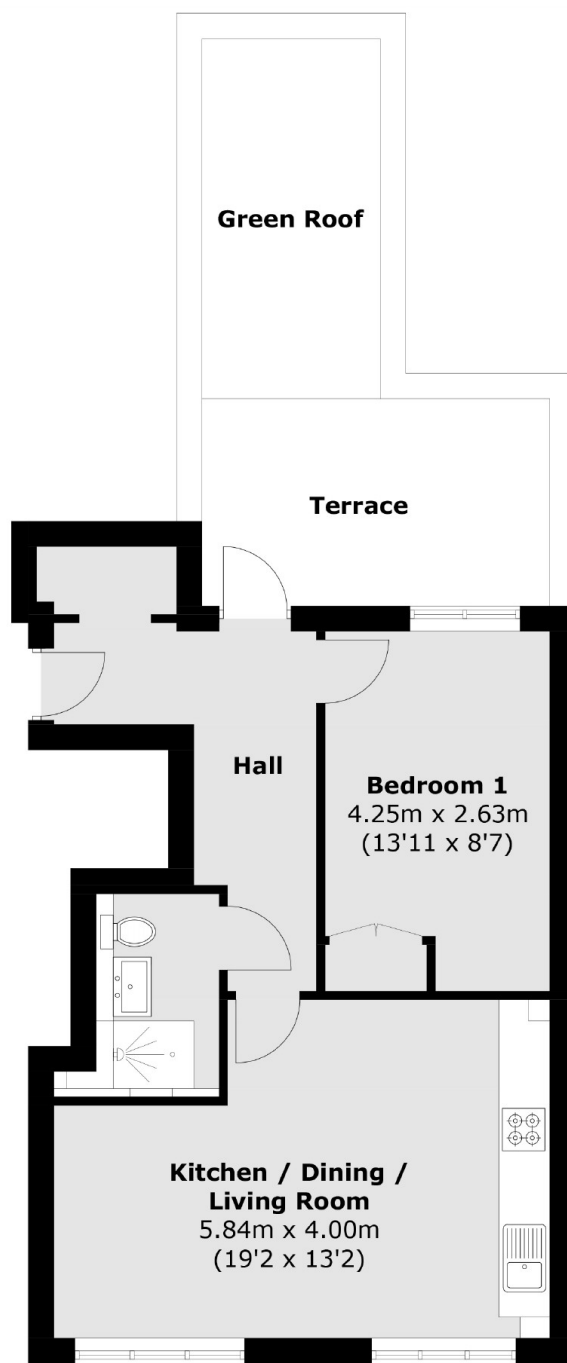
Please note the CGI's & Photographs of other developments are for illustrative purposes only, please call to discuss the exact specifications.

Wimbledon is a location where life balance is part of the fabric a bustling town centre, a stylish village, a beautiful common, a generous park with its very own lake and exceptional interconnections.

Features

- Open Plan Kitchen/Diner
- One Double Bedroom
- Balcony + Communal Gardens
- High Specification Finish
- Secure Building With Lift
- Move In Q2 2024

Hartfield Road, London, SW19



First Floor

Total area (approx.): 46.3 sq. m (498.4 sq. ft)
Terrace / Green Roof : 19.0 sq. m (204.5 sq. ft)