



Greenview Drive, SW20

£375,000

A one-bedroom bedroom one-bathroom apartment with a large balcony within a development of 10 new build homes being finished to a high specification, situated less than 500m from Raynes Park mainline station and close to the flagship David Lloyd Health Club.

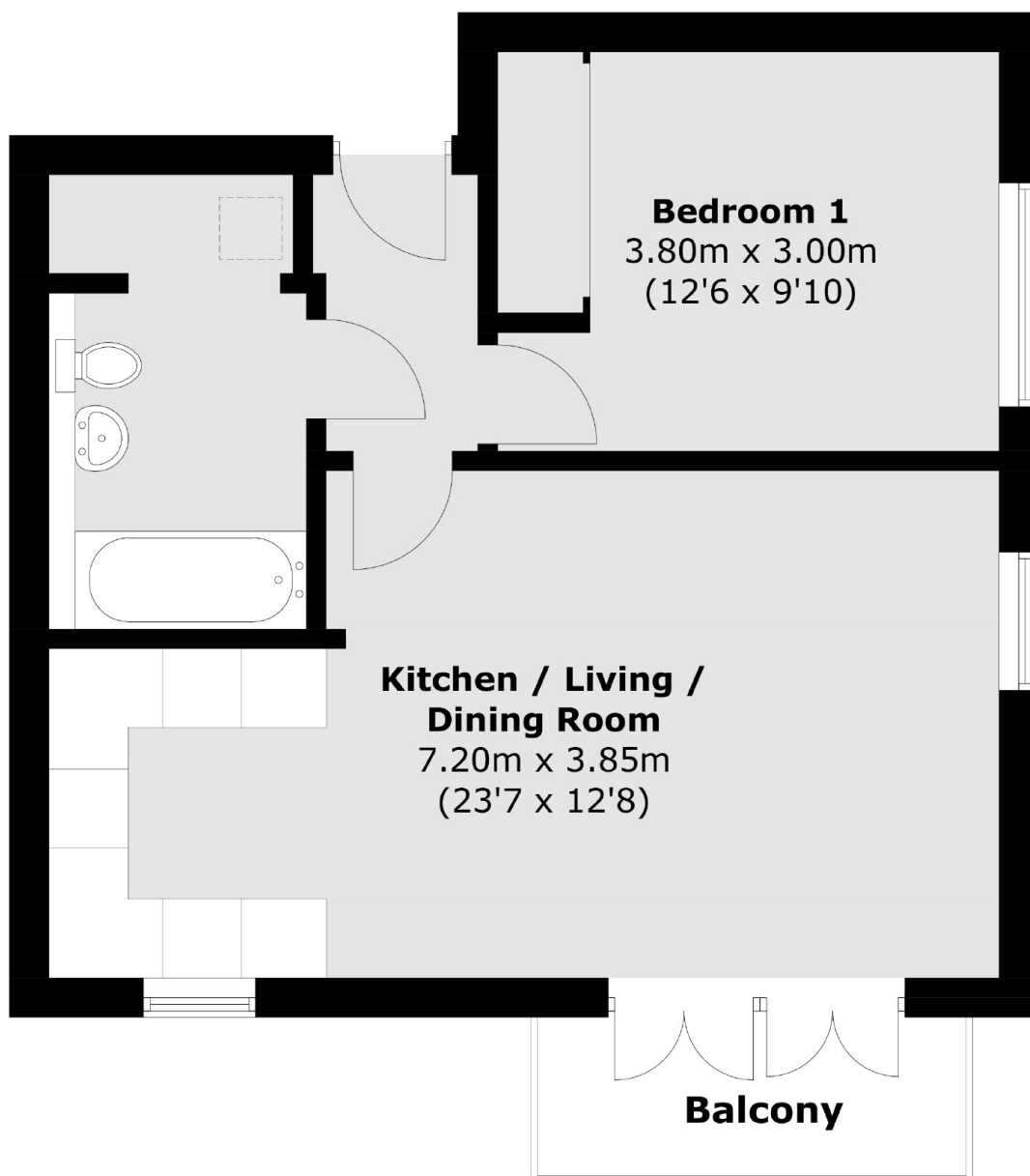
The contemporary style kitchen has all energy efficient German appliances integrated and there is plenty of storage throughout including built in wardrobes. Each apartment has an allocated parking space and benefits from a 10-year build-warranty.

Raynes Park is a charming suburban district located in the southwest of London, England. It is part of the London Borough of Merton and offers a unique blend of urban convenience and a green, residential atmosphere, with Wimbledon Common, Cannon Hill Common and Joseph Hood Park all nearby.

Features

- One Double Bedroom
- Large Balcony
- Open Plan Kitchen-Diner
- Lift To All Floors
- Allocated Parking Space
- Newly Built Apartment

Greenview Drive, London, SW20



Fourth Floor

Total area (approx.): 47.9 sq. m (515.6 sq. ft)
Balcony: 3.9 sq. m (42.0 sq. ft)