



Greenview Drive, SW20

£375,000

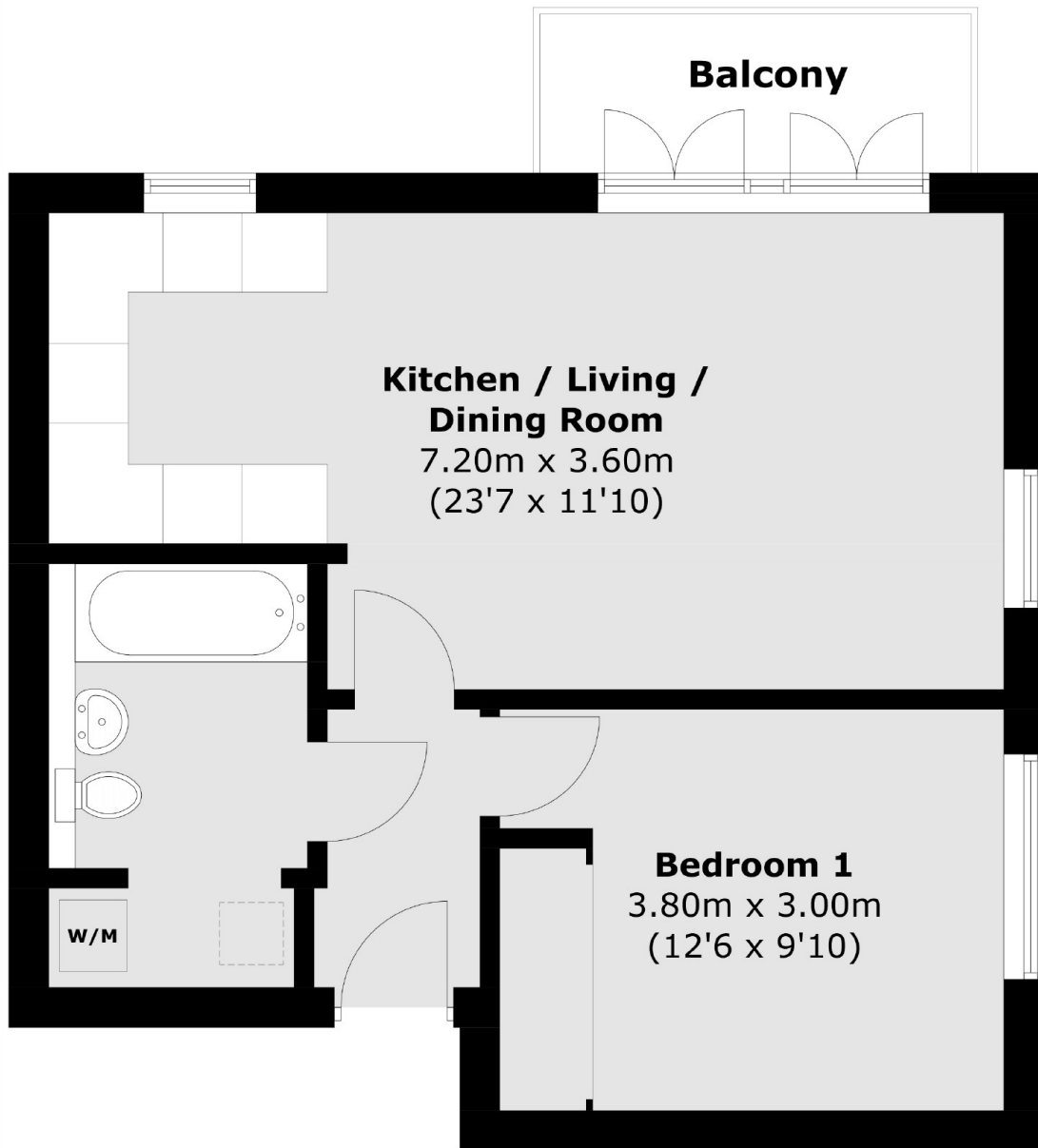
** Move in Q2 2024. A one double-bedroom apartment with a large balcony and an allocated parking space. Newly built this high-specification apartment has German appliances throughout, underfloor heating in the bathroom and energy-efficient boilers.

Raynes Park is a charming suburban district located in the southwest of London, England. It is part of the London Borough of Merton and offers a unique blend of urban convenience and a green, residential atmosphere.

Features

- One Double Bedroom
- Large Balcony
- Open Plan Kitchen-Diner
- Lift To All Floors
- Allocated Parking Space
- Highly Energy Efficient
- Plenty Of Storage
- Penthouse Collection!

Greenview Drive,
London, SW20



Fourth Floor

Total area (approx.): 45.8 sq. m (493.0 sq. ft)
Balcony: 3.9 sq. m (42.0 sq. ft)