



Hardel Rise, SW2

£695,000

** Last Home Remaining! A three-bedroom, two-bathroom home with two reception rooms. The flexible layout means you could also have a fourth bedroom on the ground floor with a lovely kitchen/reception room to the rear leading to the West facing private garden.

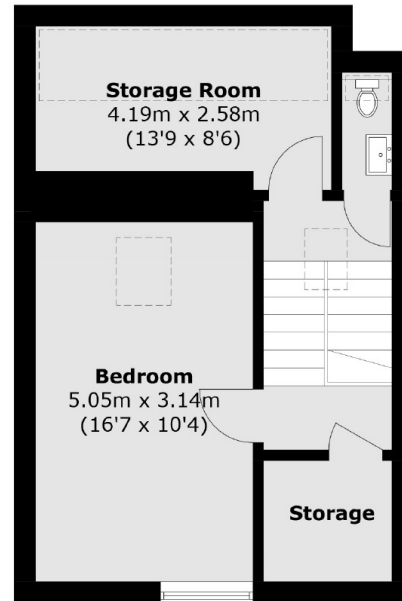
There is a large storage space on the top floor that is perfect for a home office/dressing room or just as useful additional storage. Further benefits include 10-year build guarantees as well as brand-new appliances throughout, this property is ready for quick occupation.

Tulse Hill is an incredibly convenient location accessible for the many shops, bars restaurants, and amenities of Dulwich, Streatham, Clapham & Brixton. Brockwell Park and it's 125 acres of green open spaces are on the doorstep along with it's famous Lido

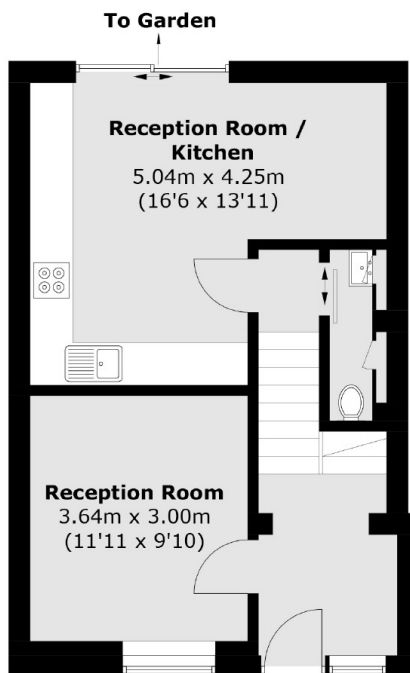
Features

Two/Three Double Bedrooms
New Build Freehold Homes
Front & Rear Gardens
High Specification Finishes
Close To Transport
Brockwell Park - Very Nearby

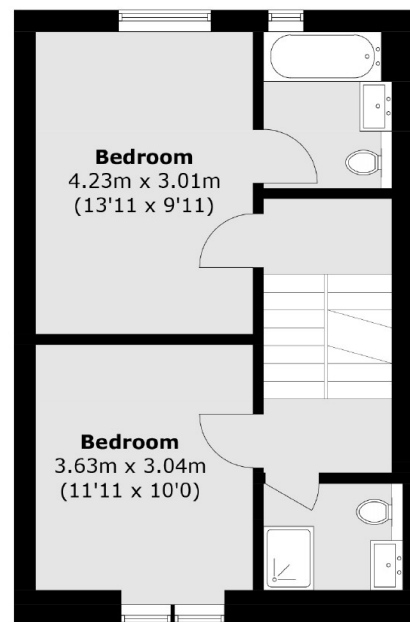
Hardel Rise, , SW2



Second Floor



Ground Floor



First Floor

Total area (approx.): 128.5 sq. m (1,383.2 sq. ft)