



## Hardel Rise, SW2

£750,000

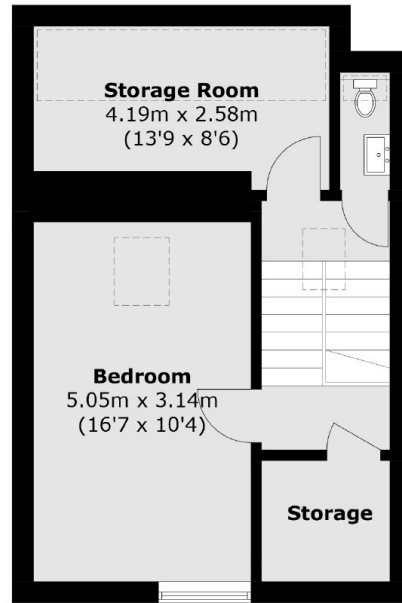
\*\* Offers In Excess of \*\* A three-bedroom, two-bathroom home with two reception rooms. There is a large storage space on the top floor suitable for storage or children's playroom. Additional there is a 10-year build guarantees as well as brand-new appliances throughout.

Tulse Hill is an incredibly convenient location accessible for the many shops, bars restaurants, and amenities of Dulwich, Streatham, Clapham & Brixton. Brockwell Park and it's 125 acres of green open spaces are on the doorstep along with it's famous Lido!

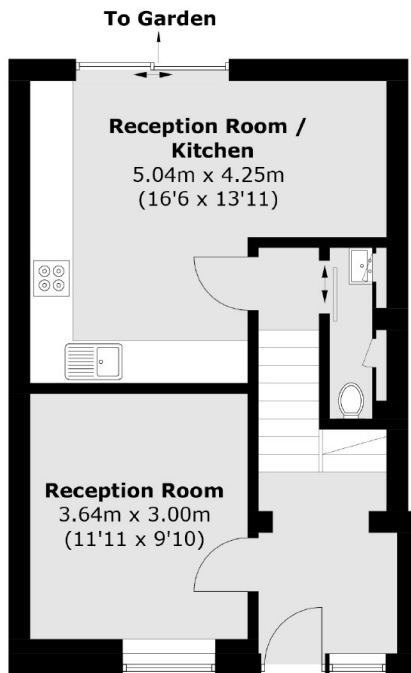
### Features

- \*\* Last House Remaining \*\*
- Three Double Bedrooms
- Two Bathrooms + W.C
- Two Reception Rooms
- Energy Efficient
- Flexible Layout
- Large Loft/Storage Room
- \*\* Last House Remaining \*\*

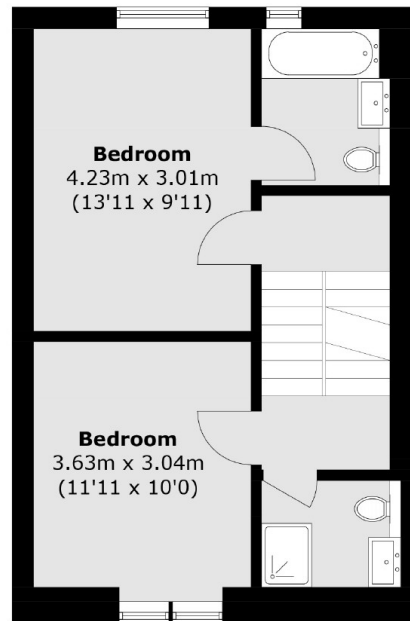
# Hardel Rise, London, SW2



**Second Floor**



**Ground Floor**



**First Floor**

Total area (approx.): 128.5 sq. m (1,383.2 sq. ft)