



Whitethorn Drive

Brighton, BN1 5LH

Guide price £1,200,000

This exquisite property presents an impressive 3/4-bedroom, 2-bathroom detached family residence, exuding elegance and luxury across its expansive 2283.13 square feet.

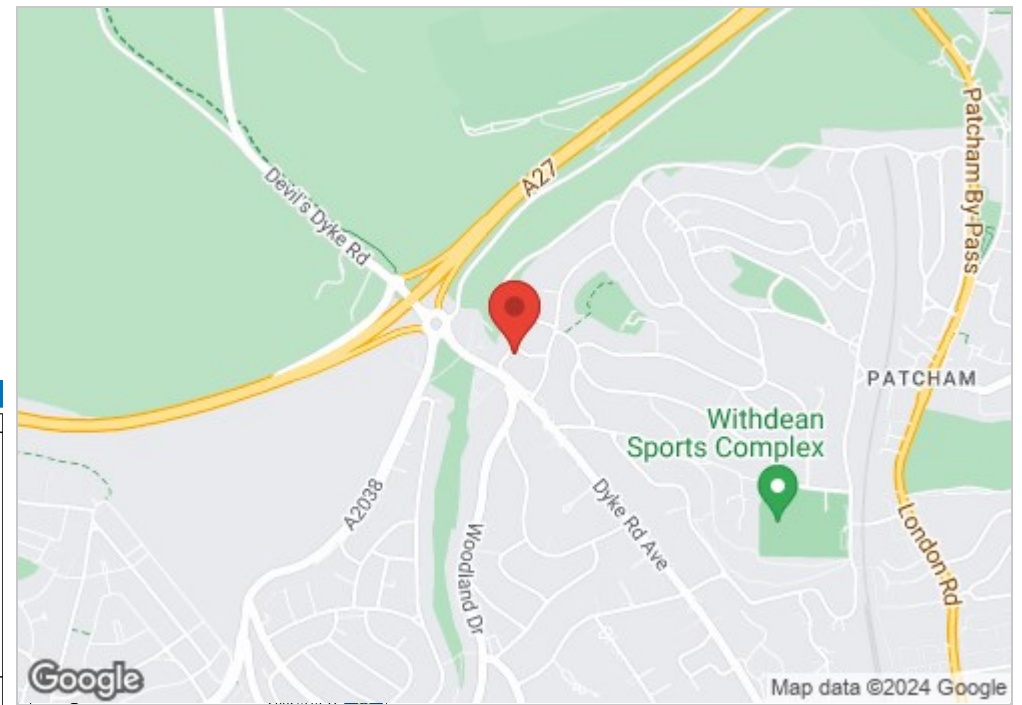
Situated off the prestigious Dyke Road and on a quiet residential street, this home offers an idyllic retreat that seamlessly blends the tranquillity of the countryside with the convenience of urban living.



- 3/4 Bedroom Detached House
- Large Open Plan Kitchen
- High Vaulted Ceiling Features
- Private Driveway
- Large Four-Zone Garden
- Through Lounge Dining Room
- Garage
- Highly Sought After Area

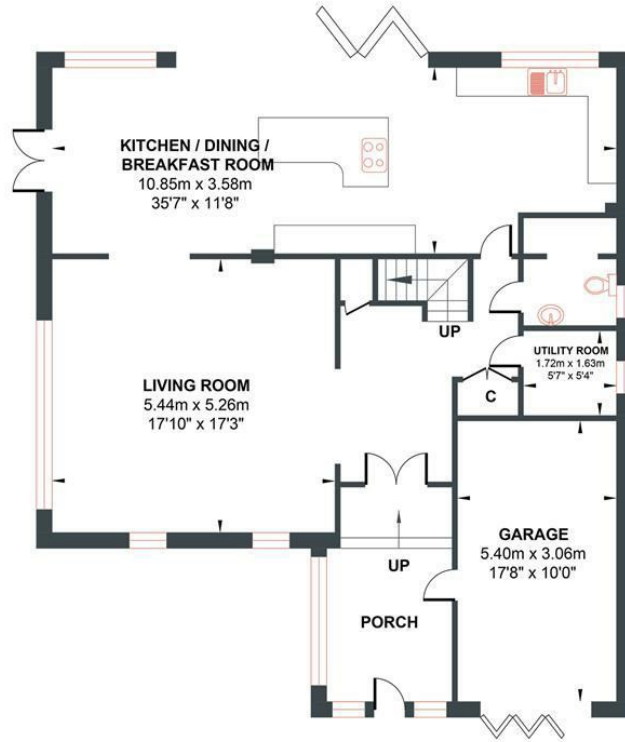
Energy Efficiency Rating		
	Current	Potential
Very energy efficient - lower running costs		
(92 plus) A		
(81-91) B		
(69-80) C		
(55-68) D		
(39-54) E		
(21-38) F		
(1-20) G		
Not energy efficient - higher running costs		
	63	74

England & Wales EU Directive 2002/91/EC

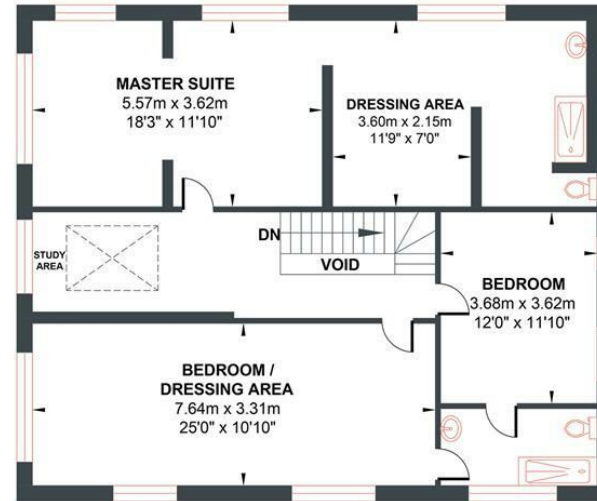


WHITETHORN DRIVE

Approximate Gross Internal Area = 212.11 sq m / 2283.13 sq ft
Illustration for identification purposes only, measurements are approximate, not to scale.



GROUND FLOOR
Approximate Floor Area
1239.03 sq ft
(115.11 sq m)



FIRST FLOOR
Approximate Floor Area
1044.09 sq ft
(97.0 sq m)



