



2 Glen Rise
Brighton, BN1 5LP

Offers in excess of £1,250,000

Presenting a remarkable opportunity to acquire a meticulously crafted Tudor-style detached home, this stunning property offers an impressive layout encompassing five bedrooms and four bathrooms, sprawling across a generous 2,551 square feet. Positioned behind a picturesque green, the home greets you with a spacious front forecourt, providing abundant off-road parking and granting access to a double length garage.



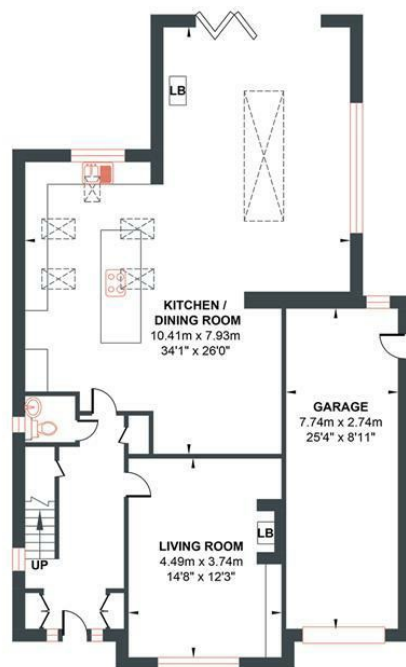
- Detached
- 5 Bedrooms
- Large Garage
- Large Garden
- Large Open Plan Kitchen
- Over 2500sq ft
- 4 Bathrooms
- Off Road Parking
- Garden Room
- Fantastic Location

Energy Efficiency Rating		
	Current	Potential
Very energy efficient - lower running costs		
(92 plus) A		
(81-91) B		
(69-80) C		
(55-68) D		
(39-54) E		
(21-38) F		
(1-20) G		
Not energy efficient - higher running costs		
England & Wales	EU Directive 2002/91/EC	

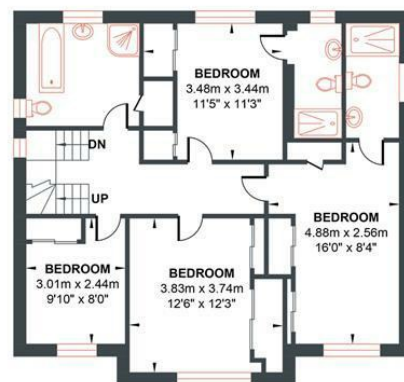


GLEN RISE

Approximate Gross Internal Area = 237.08 sq m / 2551.90 sq ft
Illustration for identification purposes only, measurements are approximate, not to scale.



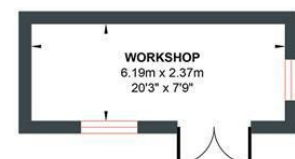
GROUND FLOOR
Approximate Floor Area
1259.80 sq ft
(117.04 sq m)



FIRST FLOOR
Approximate Floor Area
793.83 sq ft
(73.75 sq m)



SECOND FLOOR
Approximate Floor Area
340.35 sq ft
(31.62 sq m)



OUTBUILDING
Approximate Floor Area
157.90 sq ft
(14.67 sq m)

