



Withdean Road

Brighton, BN1 5BP

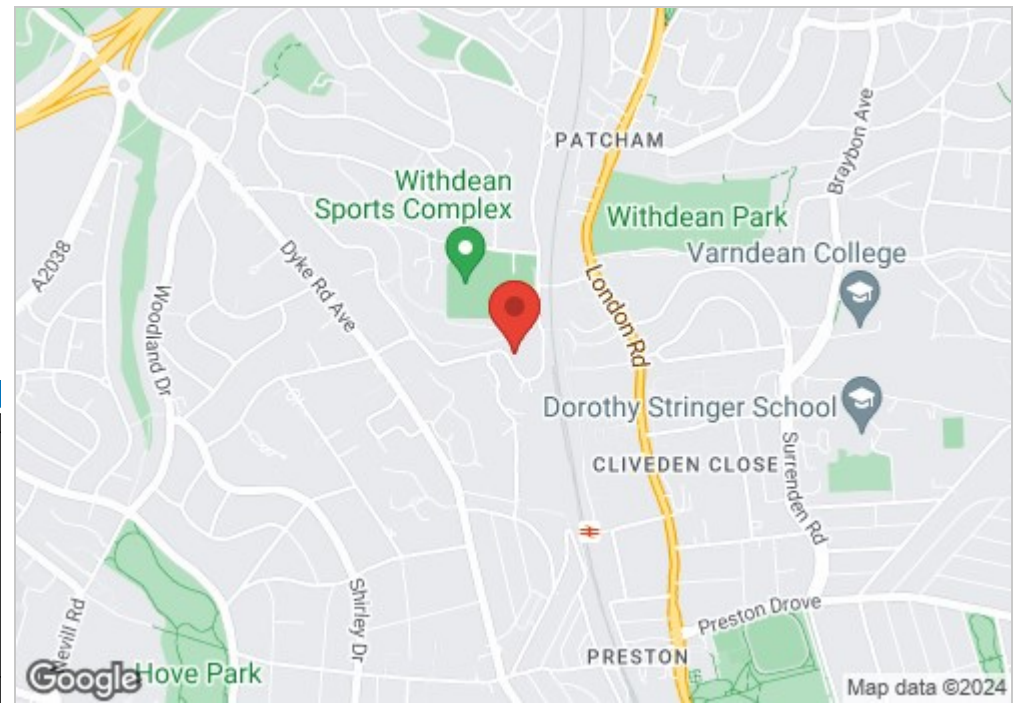


Withdean Road

Brighton, BN1 5BP

Offers in excess of £3,000,000

A stunning 4/5 double bedroom, modern house designed by the highly revered, RIBA award winning John Pardey Architects. The view from the street elegantly understates the property's size and it's not until you're inside that the true generosity of space, light and materials is revealed. It is one of three built detached homes, measures approximately 4250sqft and sits on an elevated position with fantastic views in a great location.



Energy Efficiency Rating		
	Current	Potential
Very energy efficient - lower running costs		
(92 plus) A		
(81-91) B		
(69-80) C		
(55-68) D		
(39-54) E		
(21-38) F		
(1-20) G		
Not energy efficient - higher running costs		
England & Wales		EU Directive 2002/91/EC

- Detached
- 5 Bedrooms
- Cinema Room
- Off Road Parking
- Gated
- Award Winning Design
- Large Roof Terrace
- Stunning Views
- Walk in Wardrobe
- No Chain

WITHDEAN ROAD

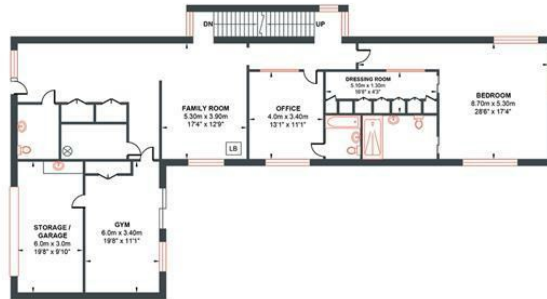
Approximate Gross Internal Area = 391.49 sq m / 4213.96 sq ft
Illustration for identification purposed only, measurements are approximate, not to scale.



N

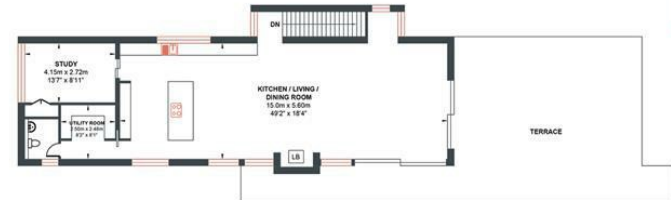
LOWER GROUND FLOOR

Approximate Floor Area
1085.75 sq ft
(100.87 sq m)



GROUND FLOOR

Approximate Floor Area
1918.45 sq ft
(178.23 sq m)



FIRST FLOOR

Approximate Floor Area
1209.75 sq ft
(112.39 sq m)



