

The Park Mews London Road

Brighton, BN1 6XP

Asking price £750,000



- Stunning modern town house
- Recently extensively modernised and improved
- Light and airy throughout
- Three floors of living space
- Tucked away setting In Gated Development, close Preston Park station and village
- Beautifully presented and appointed
- Stylish contemporary theme for easy living
- Fabulous split level and open plan Lounge and Kitchen/dining space
- Sunny landscaped split level garden
- Integral double garage with automatic doors

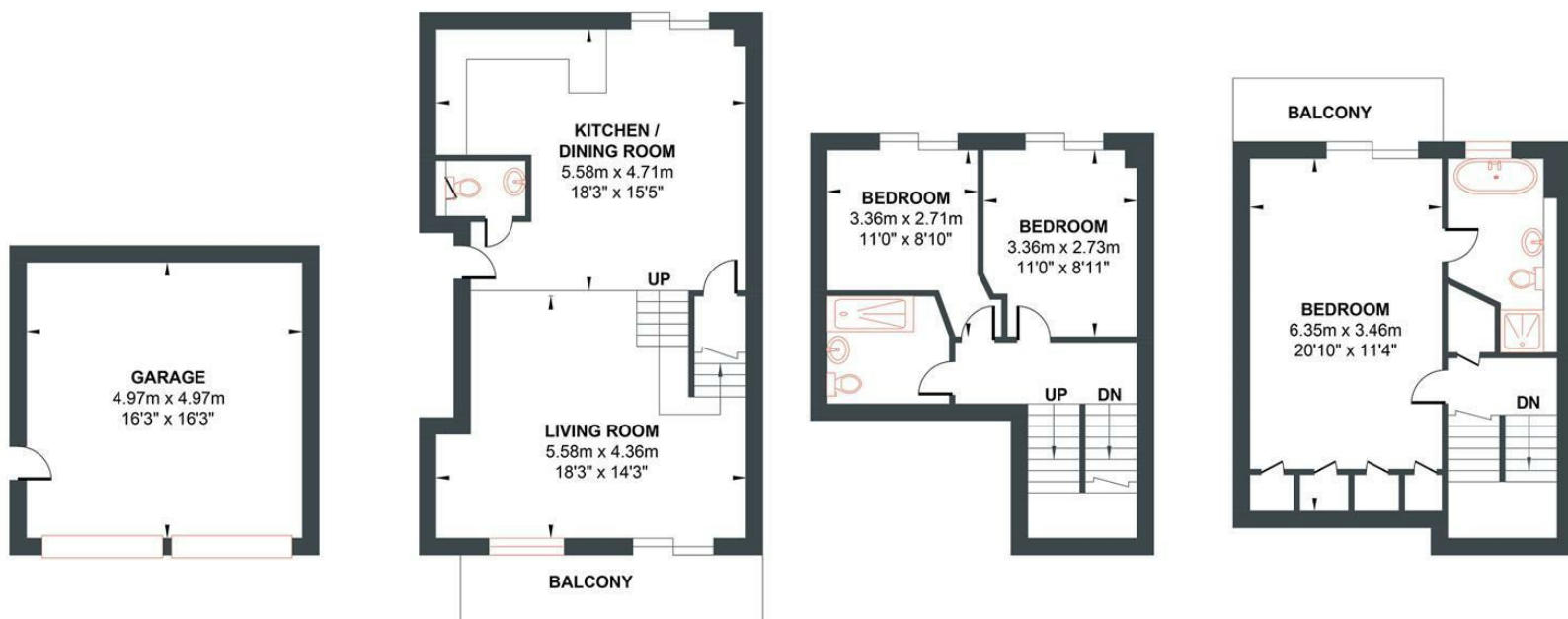
| Energy Efficiency Rating | | |
|---|---------|-------------------------|
| | Current | Potential |
| Very energy efficient - lower running costs | | |
| (92 plus) A | | |
| (81-91) B | | |
| (69-80) C | | |
| (55-68) D | | |
| (39-54) E | | |
| (21-38) F | | |
| (1-20) G | | |
| Not energy efficient - higher running costs | | |
| England & Wales | | EU Directive 2002/91/EC |



THE PARK MEWS

Approximate Gross Internal Area = 139.79 sq m / 1504.68 sq ft

Illustration for identification purposes only, measurements are approximate, not to scale.



GROUND FLOOR

Approximate Floor Area
265.86 sq ft
(24.70 sq m)

FIRST FLOOR

Approximate Floor Area
524.63 sq ft
(48.74 sq m)

SECOND FLOOR

Approximate Floor Area
325.82 sq ft
(30.27 sq m)

THIRD FLOOR

Approximate Floor Area
388.36 sq ft
(36.08 sq m)

