



Palewell Park, East Sheen, London. SW14 8JQ. Freehold





A stylish 2,800 sqft 5 bedroom, period, parkside family residence with driveway parking and a double garage.

Features

Period Parkside house
2,800 sqft (inc garage)
3 reception rooms
Five bedrooms

Off street parking for 2 cars
Detached double garage
Private garden
Planning consent to replace garage

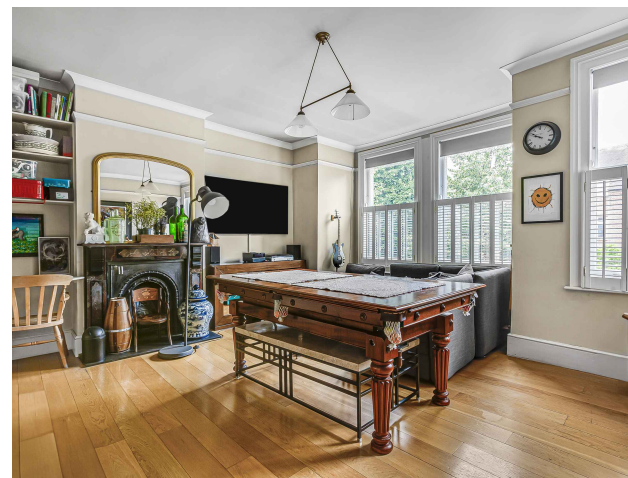
About the property

Located on the highly desirable Palewell Park, moments from the high street, this impressive period property offers in all circa 2,800 square feet of accommodation (inc. garage) and features 3 reception rooms, driveway parking for 2 cars and a detached double garage to the rear which has planning consent to create a fabulous garden office/studio/gym. The accommodation comprises; elegant reception room, dining room, kitchen opening onto a large dining/family room, five bedrooms and two bathrooms.

To the rear is an attractive hard landscaped garden affording a high degree of privacy with a large paved terrace and seating area, ideal for al fresco dining or entertaining. East Sheen is a residential area located in the London Borough of Richmond upon Thames. It is situated approximately 8 miles southwest of central London and is bordered by the river Thames to the north and Richmond Park to the south.

One of the main attractions of East Sheen is its proximity to the deer inhabited Richmond Park, which covers an area of over 2,300 acres and is the largest of the Royal Parks in London. The park offers a range of recreational activities, including walking, cycling, horse riding, and wildlife watching. It is also home to several historic buildings, including Pembroke Lodge, a former royal residence that now houses a popular cafe and event venue.

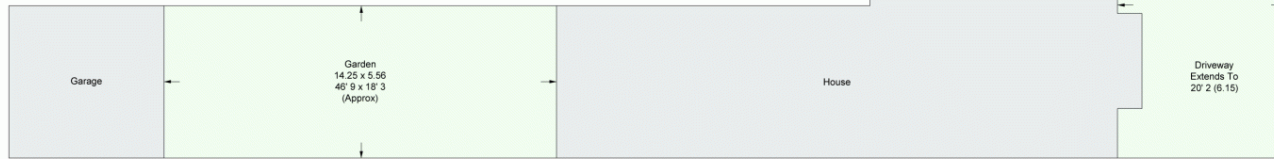
In addition to Richmond Park, East Sheen has several other green spaces, including Palewell Common and Sheen Common, both of which offer opportunities for outdoor activities and relaxation. East Sheen has a thriving high street, which is home to a range of shops, cafes, restaurants, and gastro pubs. There are also several supermarkets, including Waitrose and Tesco. The area is well known for its excellent schools, both state and private. Transportation links in East Sheen are good, a short walk to Mortlake train station, several bus routes serving the area and Richmond station providing access to the London Underground, Overground, and National Rail services, giving direct access into the City, private.



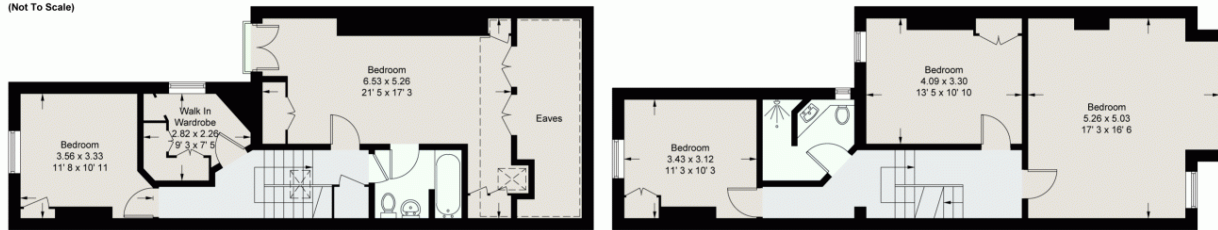


Palewell Park

Approximate Gross Internal Area = 2384 sq ft / 221.4 sq m
 (Excluding Reduced Headroom / Eaves)
 Reduced Headroom / Eaves = 144 sq ft / 13.4 sq m
 Garage = 285 sq ft / 26.5 sq m
 Total = 2813 sq ft / 261.3 sq m

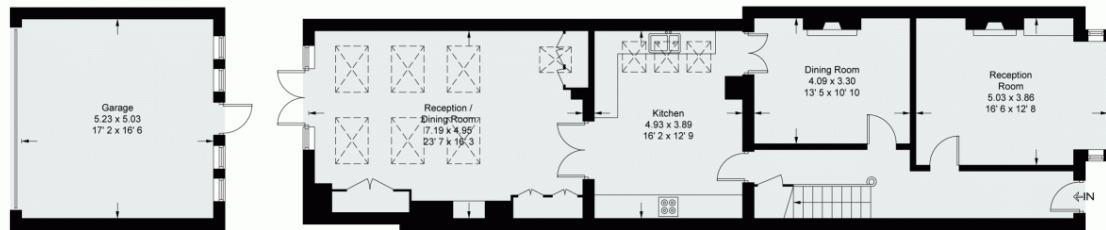


Site Plan
(Not To Scale)



Second Floor
700 sq ft / 65 sq m
(Including Reduced Headroom / Eaves)

First Floor
715 sq ft / 66.4 sq m



Ground Floor
1113 sq ft / 103.4 sq m

This plan is not to scale and must be used as layout guidance only. All measurements and areas are approximate and should not be relied upon to provide accurate information. This plan must not be relied upon when making property valuations, design considerations or any other such relevant decisions. We accept no responsibility or liability (whether in contract, tort or otherwise) in relation to any loss whatsoever arising from or in connection with any use of this plan or the adequacy, accuracy or completeness of it or any information within it.



- 0208 087 3545
- info@randallprice.co.uk
- www.randallprice.co.uk
- Suite 410, Parkway house, Sheen Lane, London, SW14 8LS

Brochure by fourwalls-group.com