



DD
IU
FOR SALE
0208 087 3545

Palewell Park, London. SW14 8JG. Freehold

DD
RANDALL PRICE
IU



A fully renovated and extended period family house of approximately 2,800 sqft with an 79' west facing garden.

Features

Period property	6 Bedrooms,
2,800 sqft	4 Bathrooms
37' Kitchen/dining/family room,	79' West facing garden

About the property

Located on the highly desirable Palewell Park, moments from the high street, this impressive period property offers 2,800 square feet of accommodation over 3 floors and features a superb kitchen/dining/family room of nearly 40', with floor to ceiling sliding glass doors opening onto a landscaped west facing rear garden. The high ceilings, cornicing, underfloor heating and modern a modern crisp finish throughout creates an immediate sense of space and quality. The property boasts a 30' double reception room, utility room, W.C, six bedrooms and four bathrooms.

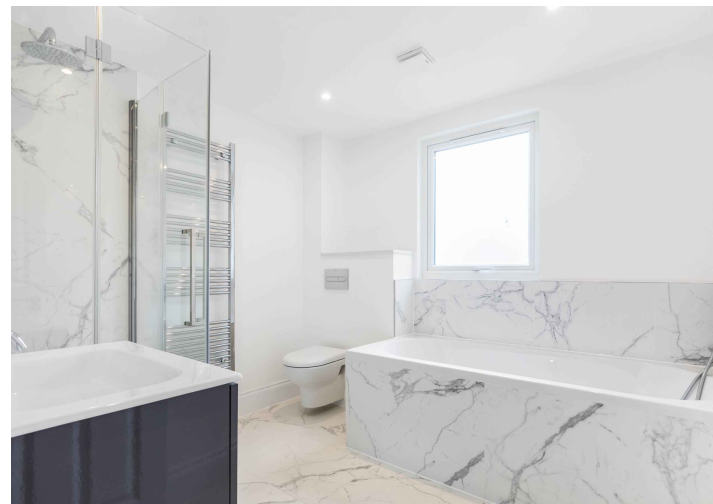
To the rear is an attractive landscaped west facing garden of 79' with a large paved terrace and seating area, ideal for al fresco dining or entertaining.

Location;

East Sheen is a suburban area located in the London Borough of Richmond upon Thames. It is situated approximately 8 miles southwest of central London and is bordered by the River Thames to the north and Richmond Park to the west.

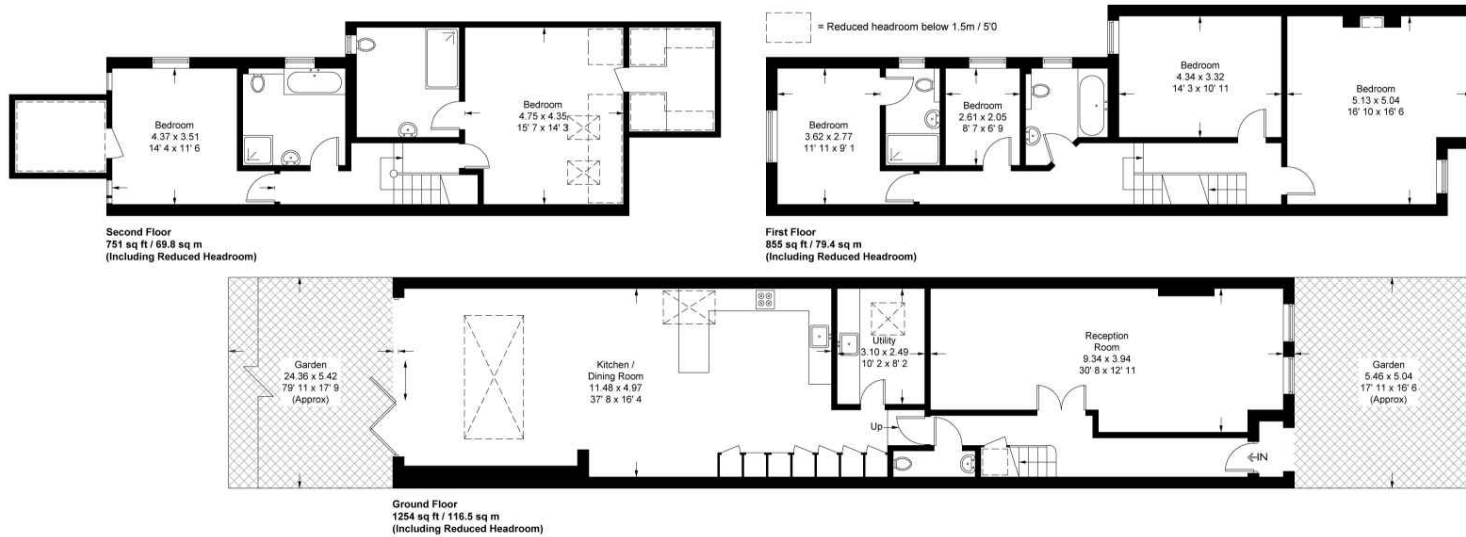
One of the main attractions of East Sheen is its proximity to Richmond Park, which covers an area of over 2,300 acres and is the largest of the Royal Parks in London. The park offers a range of recreational activities, including walking, cycling, horse riding, and wildlife watching. It is also home to several historic buildings, including Pembroke Lodge, a former royal residence that now houses a popular cafe and event venue.

In addition to Richmond Park, East Sheen has several other green spaces, including Palewell Common and Sheen Common, both of which offer opportunities for outdoor activities and relaxation. East Sheen has a thriving high street, which is home to a range of shops, cafes, restaurants, and pubs. There are also several supermarkets, including Waitrose and Tesco, making it easy for residents to do their weekly shopping. The area is known for its excellent schools, both state and private. Some of the top-rated schools in East Sheen include Sheen Mount Primary School, East Sheen Primary School, Tower House and St. Paul's School. Transportation links in East Sheen are good, with Mortlake train station, several bus routes serving the area, and Richmond station providing access to the London Underground, Overground, and National Rail services..



Palewell Park

Approximate Gross Internal Area = 2737 sq ft / 254.3 sq m
 (Excluding Reduced Headroom)
 Reduced Headroom = 123 sq ft / 11.4 sq m
 Total = 2860 sq ft / 265.7 sq m



This plan is not to scale and must be used as layout guidance only. All measurements and areas are approximate and should not be relied upon to provide accurate information. This plan must not be relied upon when making property valuations, design considerations or any other such relevant decisions. We accept no responsibility or liability (whether in contract, tort or otherwise) in relation to any loss whatsoever arising from or in connection with any use of this plan or the adequacy, accuracy or completeness of it or any information within it.

Energy Efficiency Rating	
Current	Potential
(92-100) A (81-91) B (69-80) C (55-68) D (39-54) E (21-38) F (1-20) G	
73	81
(Not energy efficient - higher running costs) England & Wales EU Directive 2002/91/EC	



- 0208 087 3545
- info@randallprice.co.uk
- www.randallprice.co.uk
- Unit 2 Sheen Stable, R/O 119-129 Sheen Lane, London SW14 8AE

Brochure by fourwalls-group.com