



Orchard Meadows, Elswick, PR4 3EY

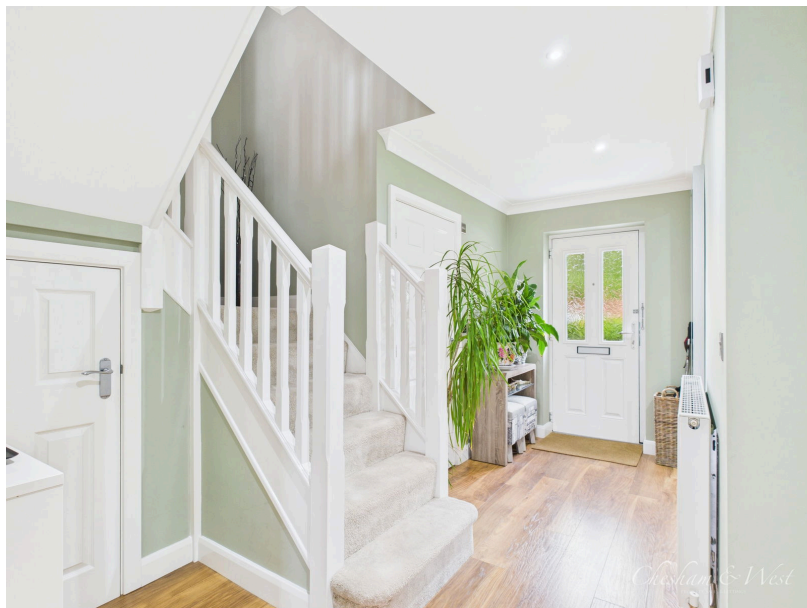
£470,000

4 3 2

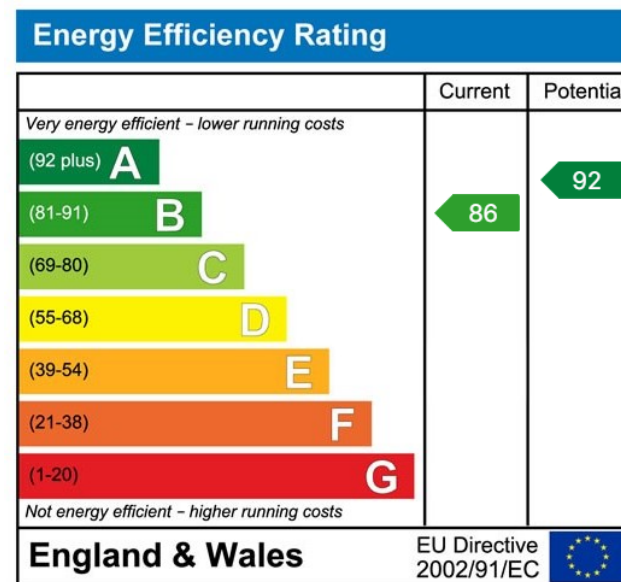


- Exceptional condition
- Large enclosed garden
- Large driveway
- Close to amenities
- Cul-de-sac
- 4 Bedrooms
- Detached garage
- Quiet village location
- Good transport links





A fabulous four bedroom detached house in the award winning village of Elswick



sales@cheshamandwest.com | 01995 888100 | www.cheshamandwest.com

West End, Great Ecclestone, PR3 0ZL