



Milestone Drive, Great Eccleston, Great Eccleston, PR3 0DG

Offers In Region Of £450,000

4 2 0



Tenure: Freehold

Chesham & West are pleased to market this beautiful family home. It is appointed and maintained to exacting standards and situated within a delightful modern development of Thorne Meadows on the outskirts of Gt. Eccleston Village Centre, the property occupies a good-sized plot incorporating a double-width driveway to the front and a stunning enclosed landscaped garden area to the rear with a covered outdoor entertaining area and fire pit, water features, lawned and patio areas, and raised flower borders. This genuine all-year-round garden is ideal for those who love to entertain.

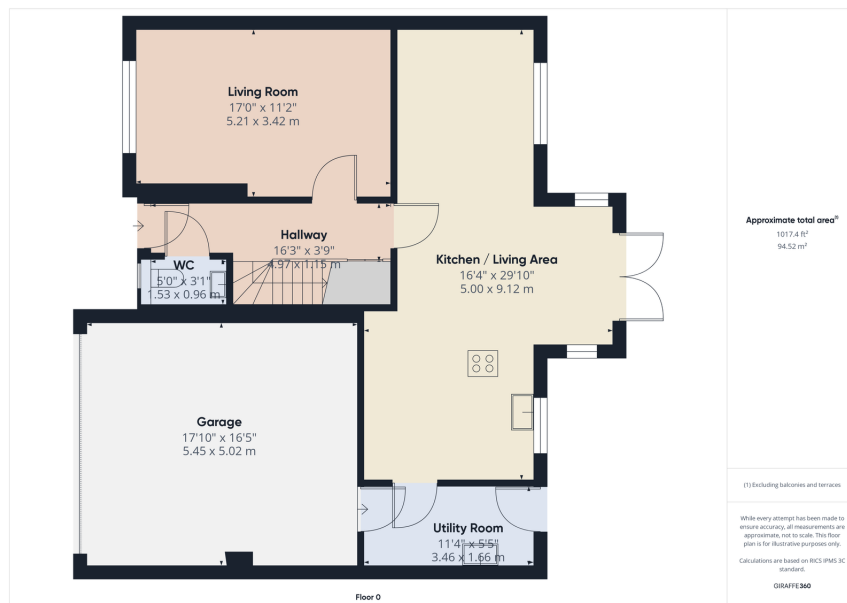
Internally, the immaculate accommodation comprises a warm and welcoming entrance hallway with a separate WC, lounge, and extensive fitted kitchen/diner/family room. The property's main focal point and very heart has French doors providing access to the rear garden. There is a separate utility room with integral access to a double garage.

On the first floor is a primary bedroom with a dressing area and en suite shower room, three double bedrooms, and a family bathroom.

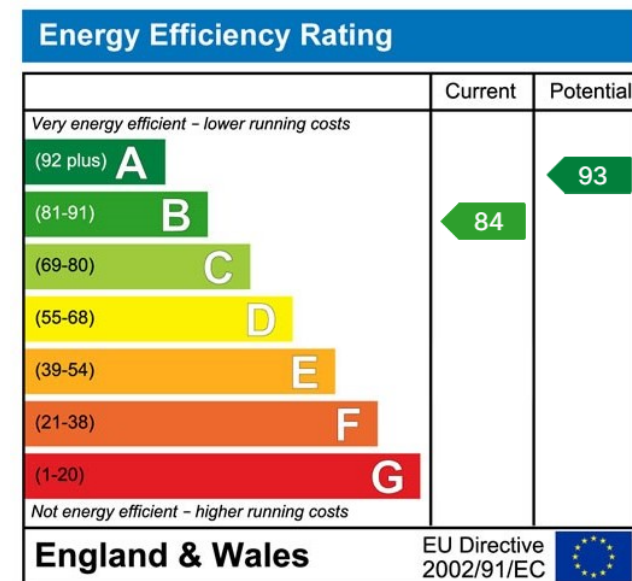
An absolute gem of a property. Internal inspection can be highly recommended.

Council Tax Information: Band E





- Excellent Village Location
- Ample Parking
- Dressing Area & En Suite To Primary Bedroom
- Walking Distance To Local Amenities
- Extensive Kitchen Diner/ Family Room & Utility Room
- Remainder Of House Builders Warranty
- Wonderfully Landscaped Gardens
- Integral Garage



sales@cheshamandwest.com | 01995 888100 | www.cheshamandwest.com

West End, Great Eccleston, PR3 0ZL