





# West View, Elswick, Preston, PR4 3UJ

£175,000

🛏 2 🚿 2 🛋 2





Chesham & West are pleased to present this chain-free, two-bedroom semi-detached property. Located in Elswick's highly sought-after semi-rural location on West View, this property is a rare opportunity in the market. It features a large garden and offers plenty of space for extension. A promising investment opportunity, the property, while in need of renovation, presents a blank canvas for personalisation and the potential to be a stunning home. On the ground floor the accommodation includes an entrance porch, lounge, kitchen, rear reception space and bathroom.

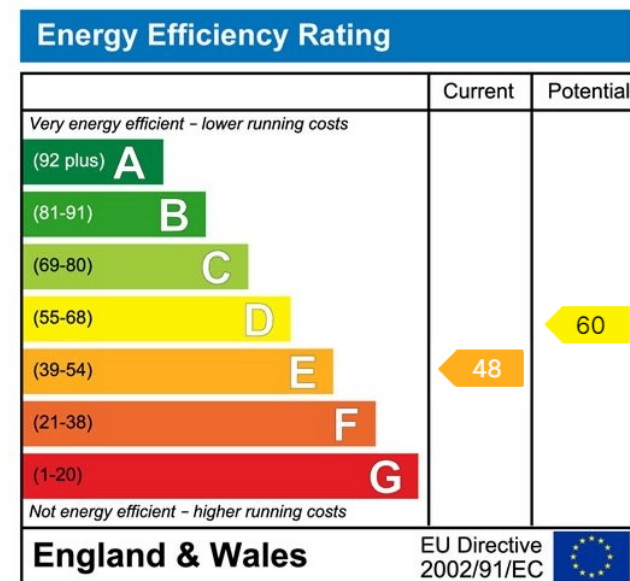
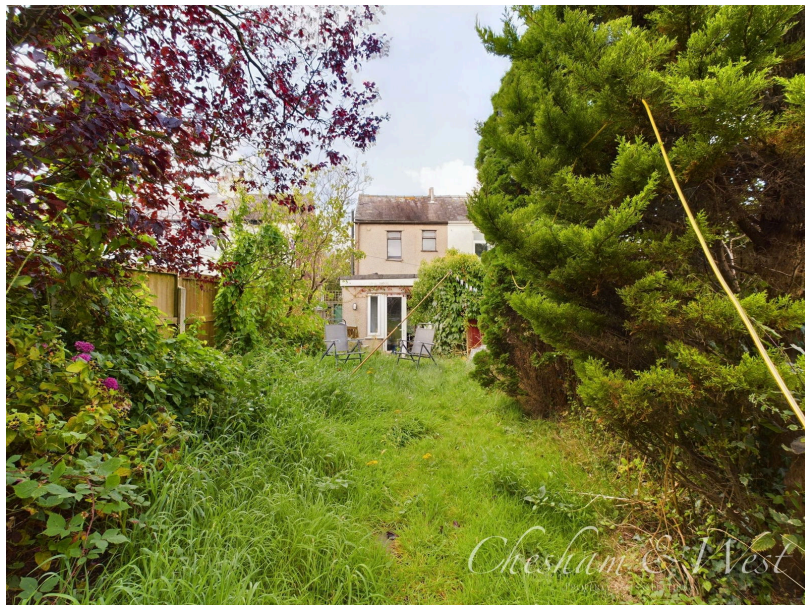
On the first floor: landing, one double bedroom and one small double with en-suite.

The property has a low-maintenance front garden and access leading up to the rear garden. The garden is a long east-facing with a patio area, lawn. We strongly advise early viewing to fully appreciate the location and potential of this property!





- Large Garden
- Semi Rural location
- Sought After Location
- Period Cottage
- Investment potential
- Chain-free



[sales@cheshamandwest.com](mailto:sales@cheshamandwest.com) | 01995 888100 | [www.cheshamandwest.com](http://www.cheshamandwest.com)

West End, Great Eccleston, PR3 0ZL