



Cartford Park, Little Eccleston, PR3.

Offers Over £35,000

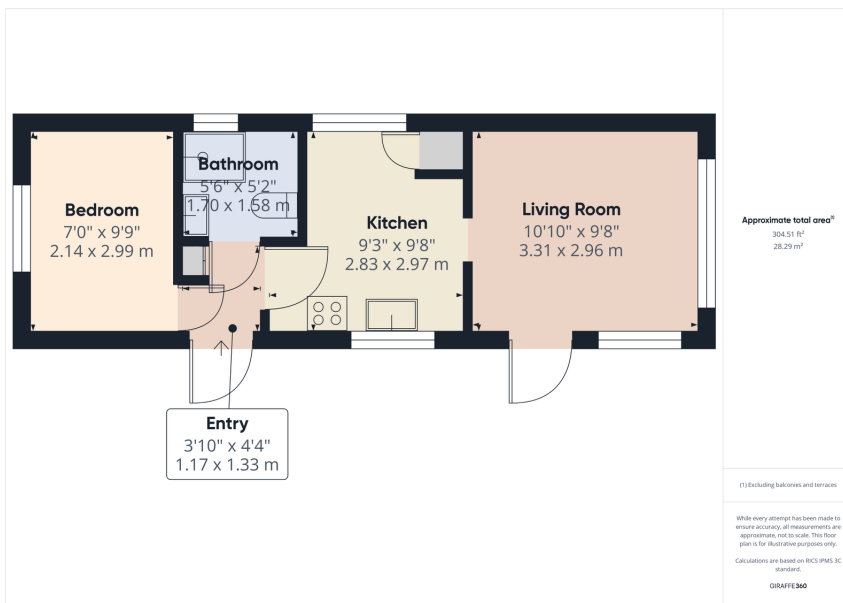
1 1 1



This pristine Waverley Omar park home is a real gem, it sits on the small private Cartford Park in Little Ecclestone. The site has a residential license so can be lived in all year round. It measures 34'x10' and has 1 reception room a fully equipped kitchen, a bathroom with walk in shower and a double bedroom. The seller has lived here for many years and is moving away to be with family. All the kitchen appliances and the outside dining furniture are included in the price. This residence benefits from mains gas, electric and sewer connections and costs £2400 per year ground rent.

Situated at the edge of the River Wyre, this home is perfectly placed for access to country walks and within a stones throw of all the amenities of Great Ecclestone. Great transport links are a short walk away.





- Residential license
- Private garden
- Allocated parking space
- Mains service connections
- Close to the River Wyre
- Fully equipped kitchen
- £2400 pa ground rent



sales@cheshamandwest.com | 01995 888100 | www.cheshamandwest.com

West End, Great Eccleston, PR3 0ZL