




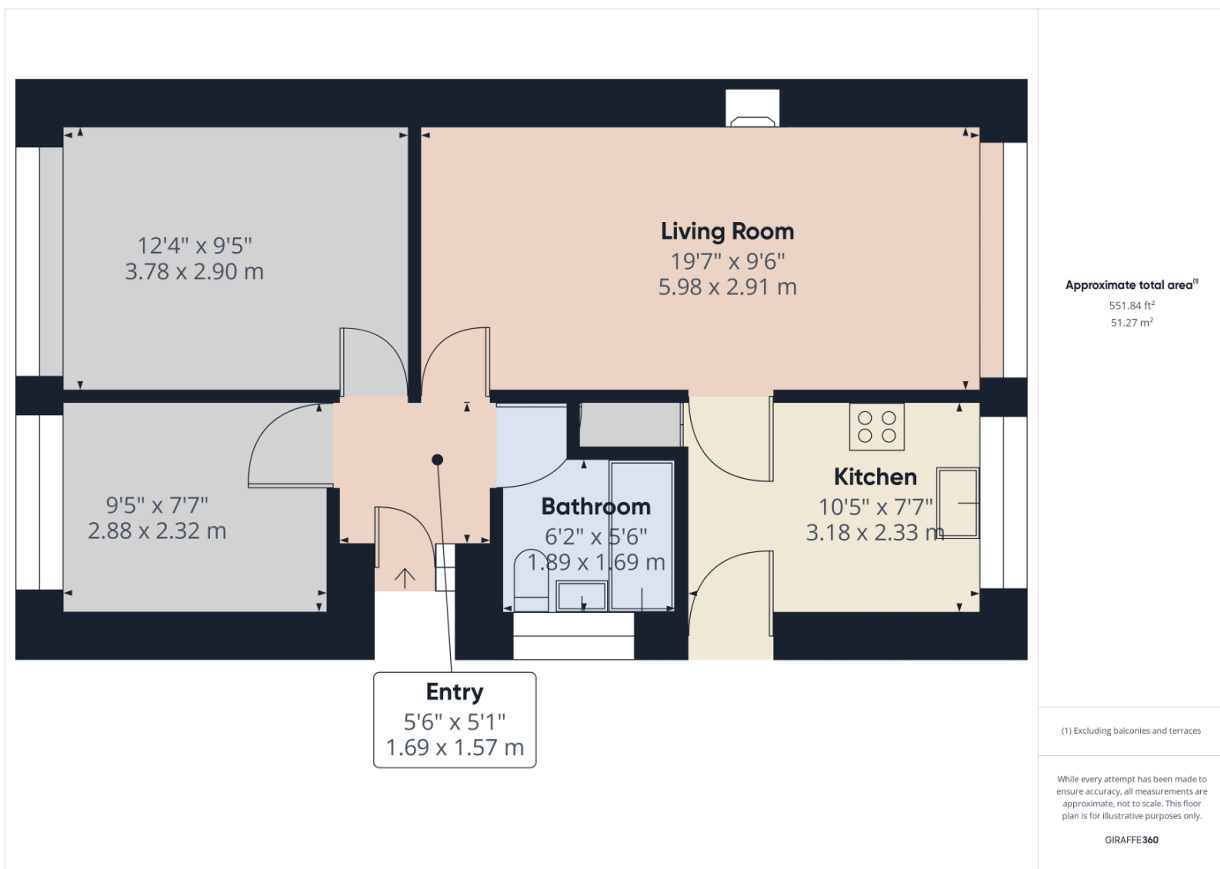
Ash Close, Elswick, Preston, PR4 3YG

£205,000

 2  1  1



- Sought after location
- Single garage
- Detached
- Two bedrooms
-
- Off road parking
- Corner plot
- Excellent condition
- Sunny aspect
-



A two-bedroom detached bungalow located within a cul-de-sac location in the very popular village of Elswick. The property features an entrance hall, lounge/diner, kitchen and family bathroom. UPVC double-glazed windows and central heating system. Gardens to the front and rear. Driveway leading to the single garage. Viewings are highly recommended; no onward Chain.