

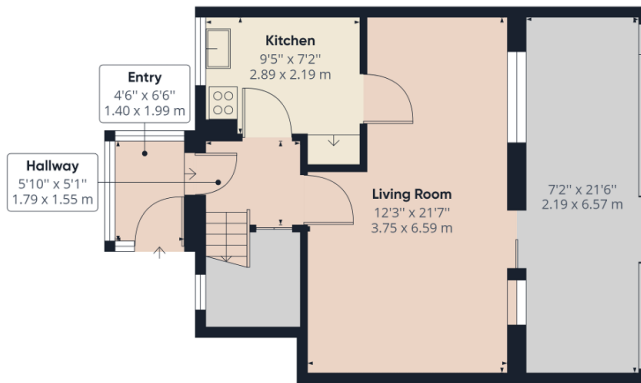
Portree Road, Blackpool, FY2 0DG

Guide Price £115,000

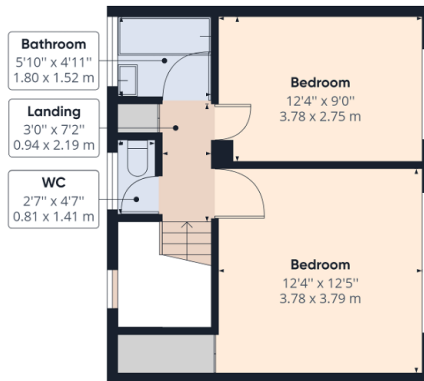
 2  1  2



- ****VIRTUAL VIEWING AVAILABLE. CLICK ON THE VIDEO TOUR ABOVE****
- Two Excellent Sized Bedrooms, Low Maintenance Rear Garden
- Generous Lounge/Dining area
- Recently new gas central heating boiler
-
- Well Presented Two Bedroom Semi Detached Home in Bispham
- Good Location Close to Local Amenities & Transport Links
- Bike or bin storage
- Double glazed
-



Floor 0



Floor 1

Approximate total area⁽¹⁾
927.34 ft²
86.15 m²

(1) Excluding balconies and terraces

While every attempt has been made to ensure accuracy, all measurements are approximate, not to scale. This floor plan is for illustrative purposes only.

GIRAFFE360

****GUIDE PRICE £115,000-£120,000****

Chesham & West are pleased to present this two bedroom mid terrace home in Bipsham.