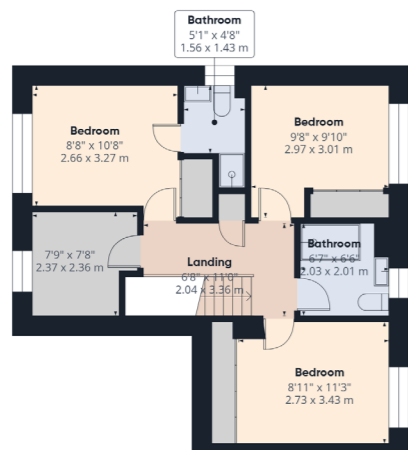
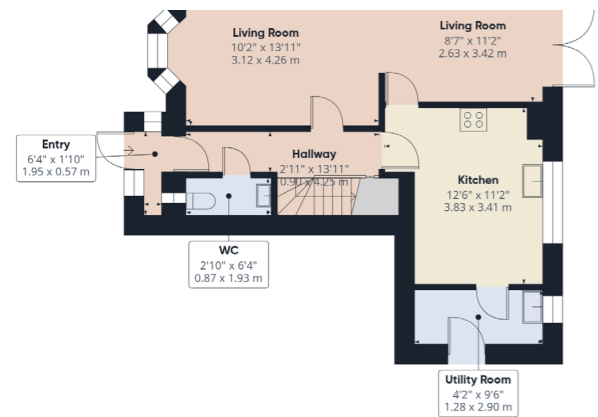




Asking Price Of £365,000

**Whitebeam Close
Paignton,
TQ3 3GA**

A 4 bedroom detached house, in a popular cul-de-sac, in a popular location. The property is in exceptional condition, including luxury integrated kitchen with quartz worktops and separate utility room. Replaced quality shower room, ensuite and cloakroom. Natural wood flooring and replaced internal doors along with good decor, which makes this property a lovely family home that should be viewed to be appreciated. No forward chain.



A uPVC and glazed front door

Entrance porch. Door to:

Hallway with an understairs cupboard. Gas central heating radiator.

Cloakroom

A low level WC, wash hand basin, gas central heating radiator and a uPVC double glazed window.

Lounge – 4.7m x 3.2m

Stunning fireplace with inset gas fire, natural wooden flooring , uPVC double glazing and Gas central heating radiator.

Dining Room - 3.6m x 2.7m

Natural wooden flooring, gas central heating and uPVC glass french doors

Kitchen/Breakfast Room – 3.8m x 3.5m

A luxury high gloss grey fitted kitchen with quartz work tops. 1 ½ bowl sink with comprehensive range of wall and base units with integrated gas hob and eye level double oven and grill. Extractor hood, spot lighting and uPVC double glazing.

Utility Room – 2.5m x 1.03m

Sink unit and wall cupboards plus appliance space. Gas boiler for central heating and domestic heated water. uPVC double glazing. Door to rear.

First Floor

Landing – Airing cupboard and access to insulated loft.

Bedroom One – 3.0m x 2.6m

Built in recessed wardrobes. uPVC double glazed window and gas central heating radiator.

En-Suite

Replaced luxury suite comprising shower cubicle, a low level WC, a vanity wash hand basin and chrome heated towel rail. Fully tiled.

Bedroom Two – 3.4m x 2.8m

Built in wardrobes and matching dressers uPVC double glazed window and gas central heating radiator.

Bedroom Three – 3.0m x 3.0m

Built in wardrobes, uPVC double glazed window and gas central heating radiator.

Bedroom Four – 2.4m x 2.4m

uPVC double glazed window and gas central heating radiator.

Shower room

Replaced luxury suite with walk in, walk out shower cubicle. Pedestal wash hand basin. Low level WC. Fully tiled with a chrome heated towel rail and uPVC double glazing.

Outside

Double drive to garage with power and lighting.

Front garden is laid as patio for easy maintenance.

Rear garden is a good size and is a nicely enclosed level and lawn with two patios and side access.

Agents note: uPVC windows replaced throughout in December 2023

Address

Whitebeam Close, Paignton, TQ3 3GA

Tenure 'Freehold'

Council Tax Band 'D'

EPC Rating 'TBC'

Taylor's Estate Agents
24-26 Hyde Road
Paignton
Devon
Tq4 5by