



Honeysuckle | Torquay | TQ2 8DP

Asking Price Of £220,000

Welcome to Honeysuckle, a beautiful Grade II* listed of 'National Importance' 2 bed barn conversion where history and modern-day luxuries truly combine. Originally forming part of a medieval farm with Devon long house this tucked away gem is nestled within the ancient Barton area of Torquay with all the conveniences of a good shopping parade, schools, public house, buses and yet, once home again, the tranquillity and calmness of this idyllic setting is noteworthy. This cottage, along with the other dwellings that made up the farm, are steeped in history with a suggested visit from Prince William of Orange in 1688 to prisoners of the Spanish Armada being held captive in the Threshing Barn!

- BARN CONVERSION
- 2 BED
- GRADE II*
- GARDEN
- PARKING
- CENTRAL HEATING

Upon entering the cottage through the large glazed front door, you are welcomed by a substantial lounge/diner/kitchen which is laid out to enjoy the outlook over the pretty barns' courtyard area. This room has beautiful oak beaming across the ceiling and a large timber framed window along with exposed stone work. The kitchen area is well appointed with more modern units including an oven and hob, dishwasher, washing machine, fridge and freezer. A spiral staircase will take you to a small landing area where there are two double bedrooms with vaulted ceiling and bathroom again all blessed with oak beam work, panelled doors and thick cobb walls. Along with the modern element to Honeysuckle there is also central heating.

Honeysuckle has its own enclosed sunny garden area which is lawned with fencing and stone walling and an apple tree from the original orchard that was planted some years ago. Parking is provided with a space within a gravelled car park area.

Step back in time and book your viewing on this unique property.

Please note: These photographs were taken when the property was being used as an awarding winning holiday let and is now unfurnished.

Material Information - Right of way footpath to communal courtyard area with access to gardens and properties carpark. Space for each car. Upkeep charge £150 per year.



Address

Honeysuckle , Torquay TQ2 8DP

Tenure

Freehold

Council Tax Band

TBC

EPC Rating

C

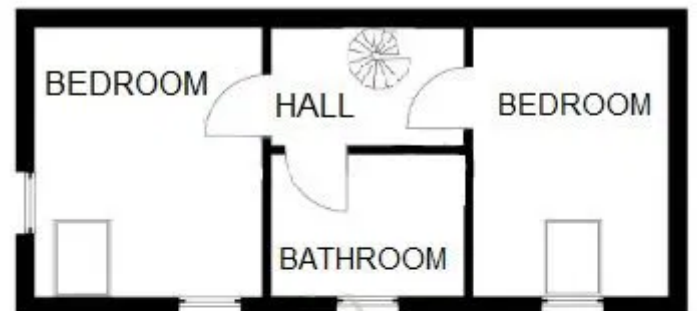
Contact Details

117 Union Street
Torquay
Torbay
TQ1 3DW

www.taylorsestates.co.uk

enquiries@taylorsestates.co.uk

01803 201904



Agents Note: These details are meant as a guide only. Any mention of planning permission, loft rooms, extensions etc, does not imply they have all the necessary consents, building control etc. Photographs, measurements, floorplans are also for guidance only and are not necessarily to scale or indicative of size or items included in the sale. Commentary regarding length of lease, maintenance charges etc is based on information supplied to us and may have changed. We recommend you make your own enquiries via your legal representative over any matters that concern you prior to agreeing to purchase.