



Jaxon Heights House | Torquay | TQ1 1SU

Guide Price £309,950

****COMING SOON ****If you are looking for a ready to move into property then this brand-new, three bedroom townhouse is a must view! This high spec house is conveniently positioned within walking distance of Babbacombe Downs and Oddicombe beach, and is also within striking distance of Torquay town centre and seafront. This contemporary property comes with all that the family occupier will need having a spacious lounge, ready to go kitchen/diner, complete with built-in appliances, downstairs WC and large store cupboard to the ground floor. Over the upper floors are the three double bedrooms with the master bedroom having a large walk-in dressing area plus a contemporary white bathroom suite with bath and shower. There is an enclosed courtyard style garden accessed from the lounge and kitchen plus a small garden frontage. There is also an allocated parking space. Nearing completion call Taylor now for further details.

- NEW BUILD
- 3 BEDROOMS
- PARKING
- BUILT-IN KITCHEN APPLIANCES
- DOWNSTAIRS WC
- DBL GLAZED/CENTRAL HEATING
- ENCLOSED COURT YARD GARDEN

Hallway - A double glazed composite front door. Large walking store cupboard.

Lounge - 5.8m x 4.3m at widest points (19'0" x 14'1")A lovely large family lounge with double glazed window to the front aspect. There are double glazed French doors leading out to the enclosed courtyard area plus a door leading through to the kitchen/diner.

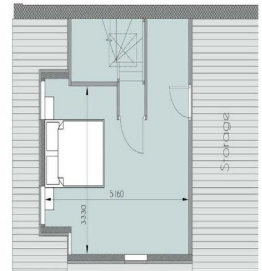
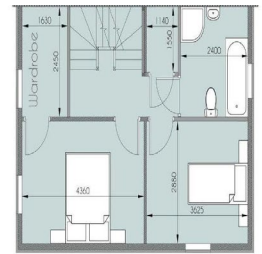
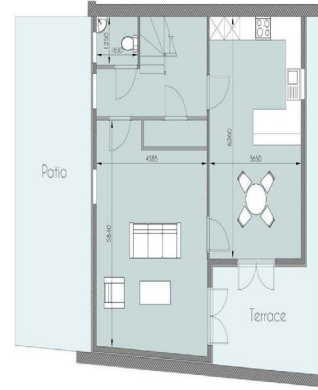
Kitchen/Diner - 6.2m x 3.6m at widest points (20'4" x 11'9")This stunning room is ideal for the cook, or those who wish to entertain having a modern luxury fitted kitchen with a range of matching wall and base units with countertops over plus built-in appliances including oven and hob, dishwasher and fridge freezer. The dining area will easily accommodate a 4-6 seater table, and also has double glazed French doors leading out to the rear courtyard garden.

Downstairs WC - Fitted with a white suite, comprising; close, coupled WC with dual flush, and wash hand basin. Double glazed window.

Stairs leading to first floor landing. Walk-in linen cupboard.

Bedroom Two - 4.3m x 2.8m at widest points (14'1" x 9'2")A stunning master bedroom with double glazed window to the front aspect, and door, leading to;-

Dressing room/wardrobe measuring approximately 2.4 m x 1.6 m. This room could also be used as a small office if desired having a double glazed window.



Bedroom Three - 3.6m x 2.8m (11'9" x 9'2")Another good double bedroom with double glazed window.

Bathroom - Fitted with a luxury white suite comprising bath with shower attachment, shower cubicle with mains shower, wash basin with LED back lit mirror over and close coupled WC with dual flush. Complimentary wall and floor tiles. Double glazed window. Chrome ladder radiator. Spotlights to ceiling.

Stairs to Second Floor. Master Bedroom - 5.1m x 3.3m at widest points (16'8" x 10'9")An impressive master bedroom which will easily accommodate a king sized bed and bedroom furniture. Double glazed window. Access to large eaves storage area.

Outside - To the front is a small private garden area with lawn and hedge borders. To the rear is an enclosed courtyard style garden space.

Parking - An allocated parking space to the front of the property.

These details, floor plans and photographs are meant as a guide only and any mention of specification, layout etc. may change or be different from advertised. the photographs may not be of the specific property advertised. Please speak to one of our property consultants for further details.

Address 'Jaxon Heights House, Windsor Road, Torquay, TQ1 1SU'

Tenure 'Freehold'

Council Tax Band 'TBC'

EPC Rating 'TBC'

Contact Details

26 Hyde Road
Paignton
Torbay
TQ4 5BY

www.taylorsestates.co.uk

info@taylorsestates.co.uk
01803 663561

Agents Note: These details are meant as a guide only. Any mention of planning permission, loft rooms, extensions etc. does not imply they have all the necessary consents, building control etc. Photographs, measurements, floorplans are also for guidance only and are not necessarily to scale or indicative of size or items included in the sale. Commentary regarding length of lease, maintenance charges etc is based on information supplied to us and may have changed. We recommend you make your own enquiries via your legal representative over any matters that concern you prior to agreeing to purchase.