

The Langham Estate



27-28 Eastcastle
Street

THIRD FLOOR
670 SQ FT | 62.24 SQ M
NEWLY REFURBISHED
A/C OFFICE SUITE TO LET

langhamestate.com
020 7580 5656





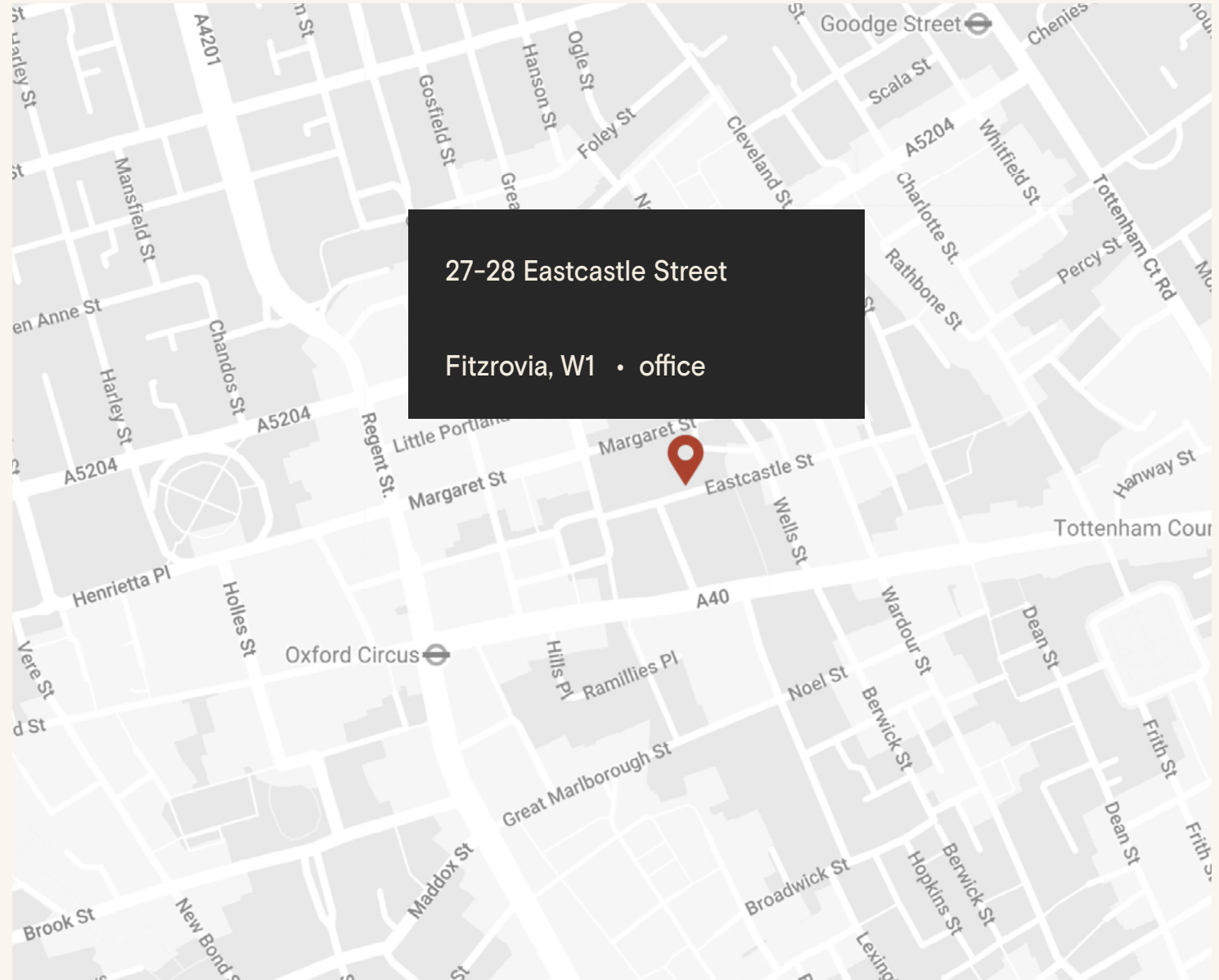
The Location

The building is situated in the heart of vibrant Fitzrovia's cosmopolitan fashion and media district, on the north side of Eastcastle Street between Great Titchfield Street and Wells Street.

The property is moments away from the international retail thoroughfare of Oxford Street & Regent Street and a short walk away from Regent's Park. The area has excellent transport links including 8 underground tube lines spread across 8 stations, as well as the Elizabeth Line.

Connectivity

Oxford Circus	5 min walk
Tottenham Court Road	8 min walk
Goodge Street	10 min walk
Bond Street	11 min walk
Great Portland Street	14 min walk
Regent's Park	17 min walk
Warren Street	17 min walk
Euston Square	20 min walk



27-28 Eastcastle Street | 3rd Floor



670 sq ft
refurbished office space
at the very centre
of Fitzrovia.









Features

- Open Plan
- One Private Office
- 24 Hour Access
- Perimeter Trunking
- Daikin VRV System
- Excellent Natural Light
- Entry Phone
- Excellent Ceiling Height
- Own Kitchenette
- Passenger Lift
- Skylights
- Communal WC's
- Sustainable Cork Flooring
- LED Lighting
- Feature Fireplaces

Details

Floor Area

670 SQ FT / 62.24 SQ M

Rent

On application

Lease Terms

A new Full Repairing & Insuring Lease is available for a term by arrangement, outside the Landlord & Tenant Act 1954.

Possession

Immediate upon completion of legal formalities

Legal Costs

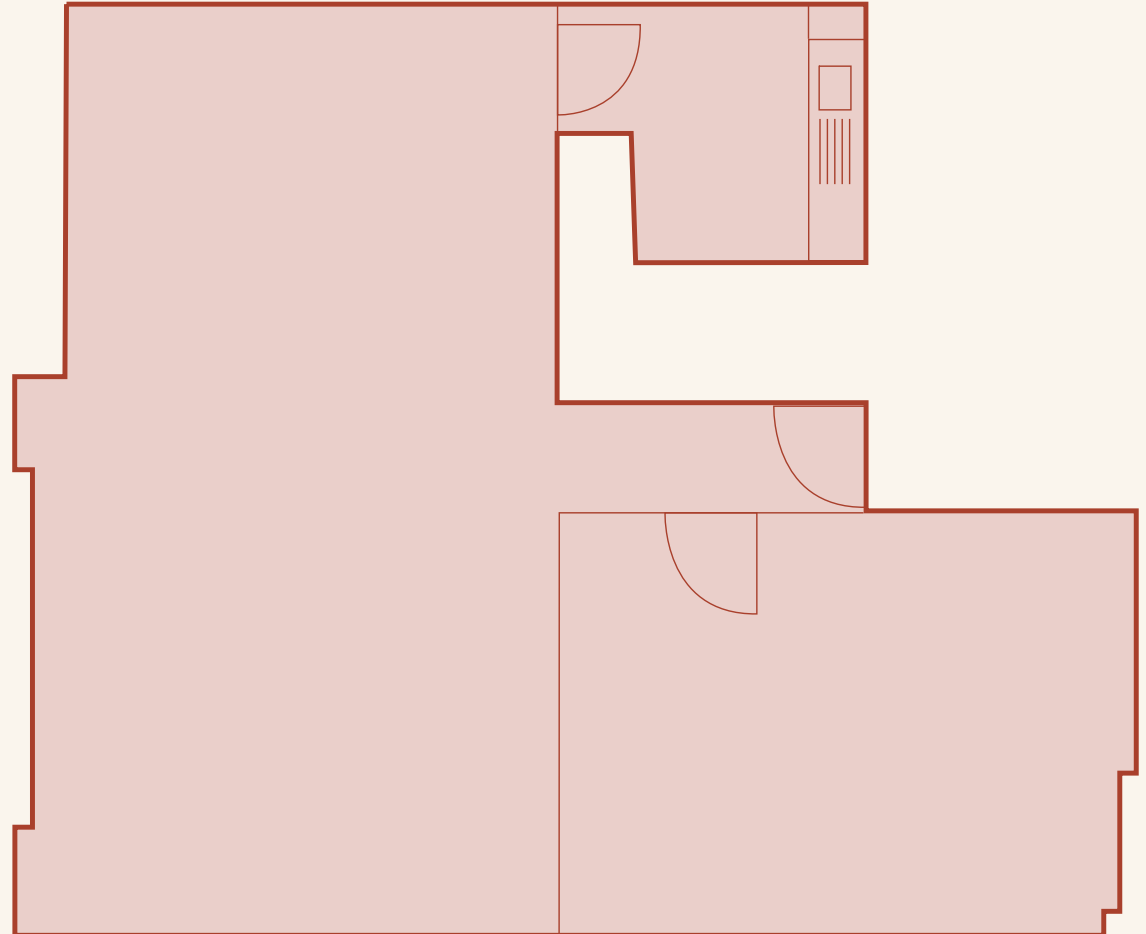
Each party to be responsible for their own legal costs

Furniture

Furniture packages available on negotiation

V.A.T.

Pricing exclusive of V.A.T.





Sustainability



Zero waste to landfill
in the building



EPC Rating



LED lighting



We aim to reach NET ZERO
emissions by 2040 from our
operations



100% Landlord
Renewable Electricity



Waste management initiative



We are Signatories of WCC
Sustainable City Charter.

The Langham Estate

langhamestate.com

For further information call

020 7580 5656



Malcolm Cohen

malcolm.cohen@langhamestate.com

020 7907 4983

07526 189 462

Daniel Yershon

daniel.yershon@langhamestate.com

020 7907 4986

07731 985 129

Any property is offered subject to contract, availability, and confirmation of details. These particulars do not form part of any contract and, whilst believed to be correct, parties are recommended to satisfy themselves as to the accuracy. The Lessors or Langham Estate Management Limited, or any person in their employment, cannot make or give any representation or warranty whatsoever in relation to this property. Unless otherwise stated, all prices and rentals quoted are exclusive of any Value Added Tax to which they may be subject. Floorplans are for illustrative purposes only and may not accurately reflect the property's current internal layout.