



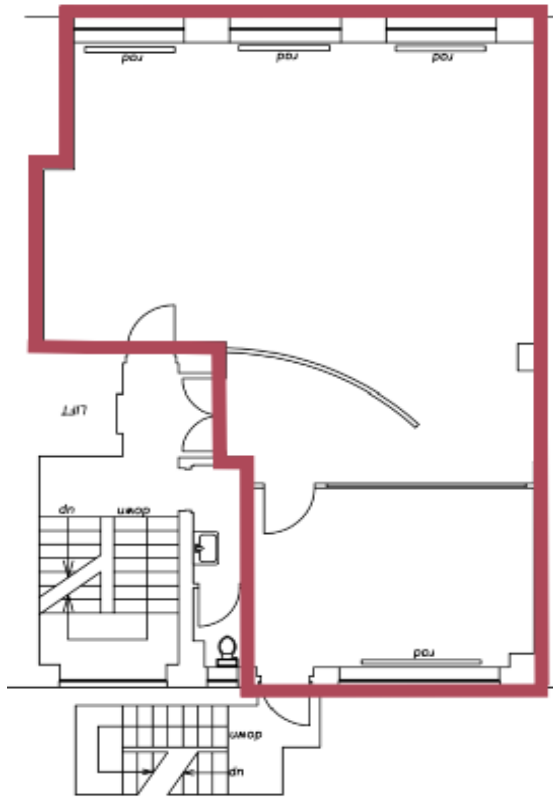
THE LANGHAM ESTATE

TRENDY OFFICE TO LET

20 Margaret Street, London W1

FOURTH FLOOR | 800 sq ft / 74.32 sq m





Located in the heart of this cosmopolitan fashion and media location on the north side of Margaret Street, between Great Portland Street and Great Titchfield Street. Transport facilities are excellent with Oxford Circus underground station and the Elizabeth Line within easy walking distance.

Open Plan with
1 Meeting Room
Excellent Natural Light
Excellent Transport Links
Feature Lighting
Storage Cupboards

Perimeter Trunking
Entry Phone
24 Hour Access
Passenger Lift
Central Heating
Wood Flooring

EPC Rating: E

RENT

On application

LEASE

A new Full Repairing & Insuring Lease is available for a term by arrangement, outside the Landlord & Tenant Act 1954.

POSSESSION

Immediate upon completion of legal formalities

For further information call

020 7580 5656

LanghamEstate.com | MyNoho.co.uk

MALCOLM COHEN

malcolm.cohen@langhamestate.com

020 7907 4983

07526 189 462

DANIEL YERSON

daniel.yershon@langhamestate.com

020 7907 4986

07731 985 129

Offices | Retail | Restaurants | Showrooms | Residential | Storage



Langham Estate Management Ltd, London House, 9A Margaret Street, London W1W 8RJ

Any property is offered subject to contract, availability, and confirmation of details. These particulars do not form part of any contract and, whilst believed to be correct, parties are recommended to satisfy themselves as to the accuracy. The Lessors or Langham Estate Management Limited, or any person in their employment, cannot make or give any representation or warranty whatsoever in relation to this property. Unless otherwise stated, all prices and rentals quoted are exclusive of any Value Added Tax to which they may be subject. Floorplans are for illustrative purposes only and may not accurately reflect the property's current internal layout.