



THE LANGHAM ESTATE

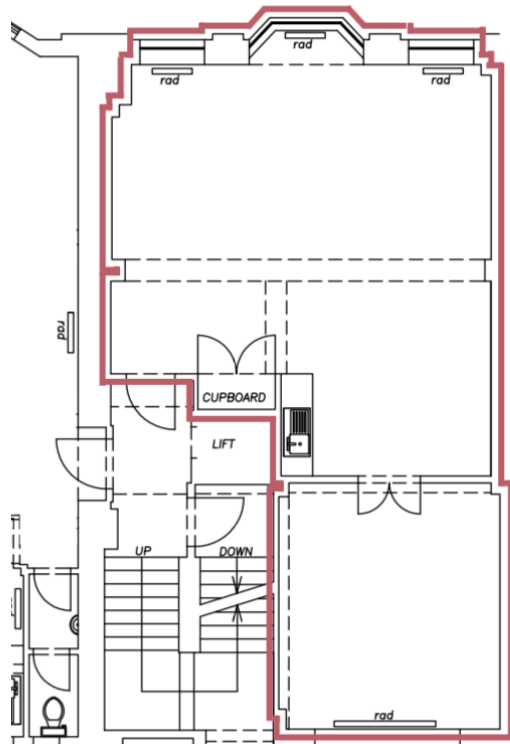
STYLISH OFFICE SUITE

63/64 Margaret Street, London W1

THIRD FLOOR (EAST) | 770 sq ft / 71.54 m²



THIRD FLOOR (EAST)



Located on the south side of Margaret Street between Great Titchfield Street and Great Portland Street. The property is within minutes of Regent Street, Oxford Circus Underground Station, the Elizabeth Line and numerous trendy cafés and restaurants that service this vibrant location.

Open Plan with
Separate Meeting Room
Excellent Natural Light
Bay Sash Windows
Central Heating

Perimeter Trunking
Kitchenette
Communal WC's
Passenger Lift
24 Hour Access

**Also Available: 2nd Floor (West) 700 sq ft
3rd Floor (West) 630 sq ft
5th Floor (West) 520 sq ft**

EPC Rating: D

RENT

On application.

LEASE

A new Full Repairing & Insuring Lease is available for a term by arrangement, outside the Landlord & Tenant Act 1954.

POSSESSION

Immediate upon completion of legal formalities.

For further information call

020 7580 5656

LanghamEstate.com | MyNoho.co.uk

MALCOLM COHEN

malcolm.cohen@langhamestate.com

020 7907 4983

07768 156 577

DANIEL YERSON

daniel.yershon@langhamestate.com

020 7907 4986

07731 985 129

Offices | Retail | Restaurants | Showrooms | Residential | Storage



Langham Estate Management Ltd, London House, 9A Margaret Street, London W1W 8RJ

Any property is offered subject to contract, availability, and confirmation of details. These particulars do not form part of any contract and, whilst believed to be correct, parties are recommended to satisfy themselves as to the accuracy. The Lessors or Langham Estate Management Limited, or any person in their employment, cannot make or give any representation or warranty whatsoever in relation to this property. Unless otherwise stated, all prices and rentals quoted are exclusive of any Value Added Tax to which they may be subject. Floorplans are for illustrative purposes only and may not accurately reflect the property's current internal layout.