

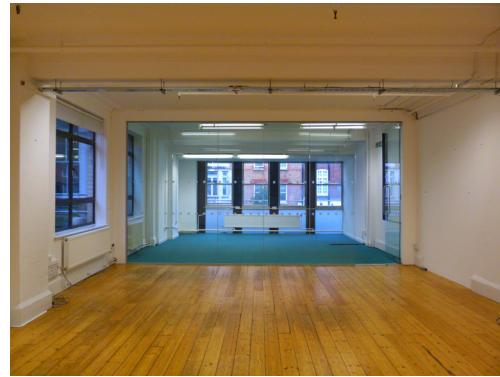
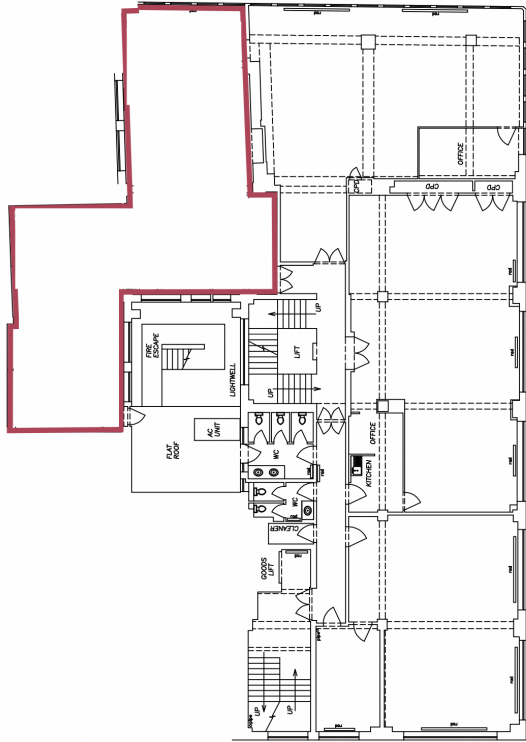
THE LANGHAM ESTATE

TRENDY MEDIA STYLE OFFICE WITH SKYLIGHT

Moray House,
23-35 Great Titchfield Street, London W1

SUITE 1, FIRST FLOOR | 1,440 sq ft / 133.77 m²





Located in the heart of this cosmopolitan fashion and media district, on the West side of Great Titchfield Street, between Little Portland Street and Mortimer Street. The property is within a moments' walk of Oxford Circus Station, the Elizabeth Line and the numerous shopping, entertainment and restaurant facilities that service this vibrant location.

Open Plan
1 Meeting Room
Video Entry Phone
Feature Skylight
Large Windows

Excellent Natural Light
Excellent Ceiling Height
Private Kitchenette
Original Wood Flooring
Storage Cupboard

24 Hour Access
Passenger Lift
Central Heating
Feature Lighting
New Fibre Cabling

Also Available | 5th Floor 3,250 sq ft
| 6th Floor 2,050 sq ft
| 2nd Floor 865 sq ft

EPC Rating: D

RENT
On application

LEASE
A new Full Repairing & Insuring Lease is available for a term by arrangement, outside the Landlord & Tenant Act 1954.

POSSESSION
Immediate upon completion of legal formalities

For further information call
020 7580 5656
LanghamEstate.com | MyNoho.co.uk

MALCOLM COHEN
malcolm.cohen@langhamestate.com
020 7907 4983
07768 156 577

DANIEL YERSON
daniel.yershon@langhamestate.com
020 7907 4986
07731 985 129

Offices | Retail | Restaurants | Showrooms | Residential | Storage



Langham Estate Management Ltd, London House, 9A Margaret Street, London W1W 8RJ

Any property is offered subject to contract, availability, and confirmation of details. These particulars do not form part of any contract and, whilst believed to be correct, parties are recommended to satisfy themselves as to the accuracy. The Lessors or Langham Estate Management Limited, or any person in their employment, cannot make or give any representation or warranty whatsoever in relation to this property. Unless otherwise stated, all prices and rentals quoted are exclusive of any Value Added Tax to which they may be subject. Floorplans are for illustrative purposes only and may not accurately reflect the property's current internal layout.