



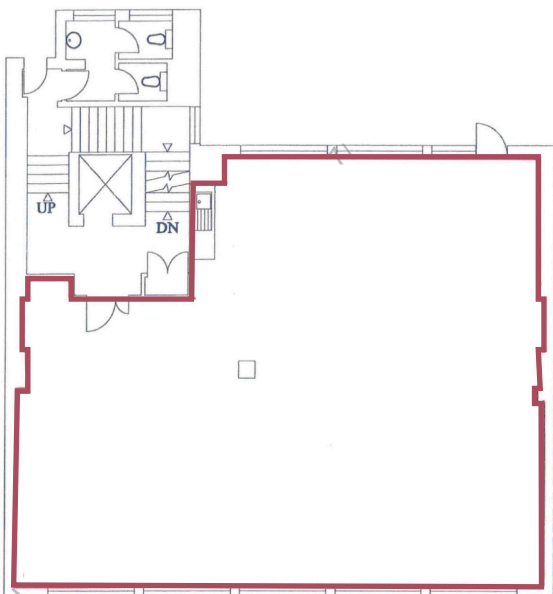
THE LANGHAM ESTATE

NEWLY DECORATED OFFICE SUITE

**32-36 Great Portland Street, London W1**

THIRD FLOOR | 1,650 sq ft / 153.28 m<sup>2</sup>





Located on Great Portland Street moments away from Oxford Circus underground station, the Elizabeth Line and the numerous trendy cafés and restaurants that service this vibrant location. The area attracts a diverse mix of media, fashion and gallery businesses.

Open Plan with  
1 Meeting Room  
1 Office  
Excellent Natural Light  
Central Heating  
Private Kitchenette

Communal WC's  
Passenger Lift  
Entryphone  
24 Hour Access  
Excellent Transport Links  
Wood Flooring

**EPC Rating: C**

**RENT**  
On application

**LEASE**  
A new Full Repairing & Insuring Lease is available for a term by arrangement, outside the Landlord & Tenant Act 1954.

**POSSESSION**  
Immediate upon completion of legal formalities

For further information call  
**020 7580 5656**  
LanghamEstate.com | MyNoho.co.uk

**MALCOLM COHEN**  
malcolm.cohen@langhamestate.com  
020 7907 4983  
07526 189 462

**DANIEL YERSHON**  
daniel.yershon@langhamestate.com  
020 7907 4986  
07731 985 129

Offices | Retail | Restaurants | Showrooms | Residential | Storage



Langham Estate Management Ltd, London House, 9A Margaret Street, London W1W 8RJ

Any property is offered subject to contract, availability, and confirmation of details. These particulars do not form part of any contract and, whilst believed to be correct, parties are recommended to satisfy themselves as to the accuracy. The Lessors or Langham Estate Management Limited, or any person in their employment, cannot make or give any representation or warranty whatsoever in relation to this property. Unless otherwise stated, all prices and rentals quoted are exclusive of any Value Added Tax to which they may be subject. Floorplans are for illustrative purposes only and may not accurately reflect the property's current internal layout.