



Belmont Street, Eccles

Manchester



In Excess of **£280,000**

Belmont Street

Eccles, Manchester

Beautiful two bed semi-detached property in Monton Village. Open plan layout, modern kitchen, landscaped garden, off-road parking. Ideal for first-time buyers or downsizers. Close to amenities and transport links.

Council Tax band: B

Tenure: Freehold

- Located in the Heart of Monton Village Surrounded by a Plethora of Amenities & Excellent Transport Links
- Beautifully Presented Throughout and Ready to Move Straight in to
- Open Plan Lounge and Dining Room
- Perfect First Time Buy or Downsize
- Modern Fitted Kitchen and Bathroom Suite
- Two Generous Double Bedrooms
- Gated Off Road Parking for Multiple Cars
- Landscaped Rear Garden with Paved Indian Stone Patio & Well Kept Lawn



HILLS

Lounge

19' 3" x 11' 5" (5.87m x 3.48m)

Featuring a gas fire. Complete with two ceiling light points, double glazed window and two wall mounted radiators. Fitted with hardwood flooring. Storage cupboard.

Kitchen

11' 5" x 7' 7" (3.48m x 2.31m)

Featuring complementary wall and base units with ceramic sink, induction hob and oven. Complete with ceiling spotlights, double glazed window and wall mounted radiator. Fitted with uPVC door and laminate tiled flooring. Boiler.

Landing

Complete with carpet flooring. Access to a half boarded and insulated loft.

Bedroom One

11' 1" x 10' 9" (3.38m x 3.28m)

Complete with a ceiling light point, double glazed window and wall mounted radiator. Fitted with carpet flooring.

Bedroom Two

11' 6" x 9' 3" (3.51m x 2.82m)

Featuring fitted wardrobes. Complete with a ceiling light point, double glazed window and wall mounted radiator. Fitted with carpet flooring.

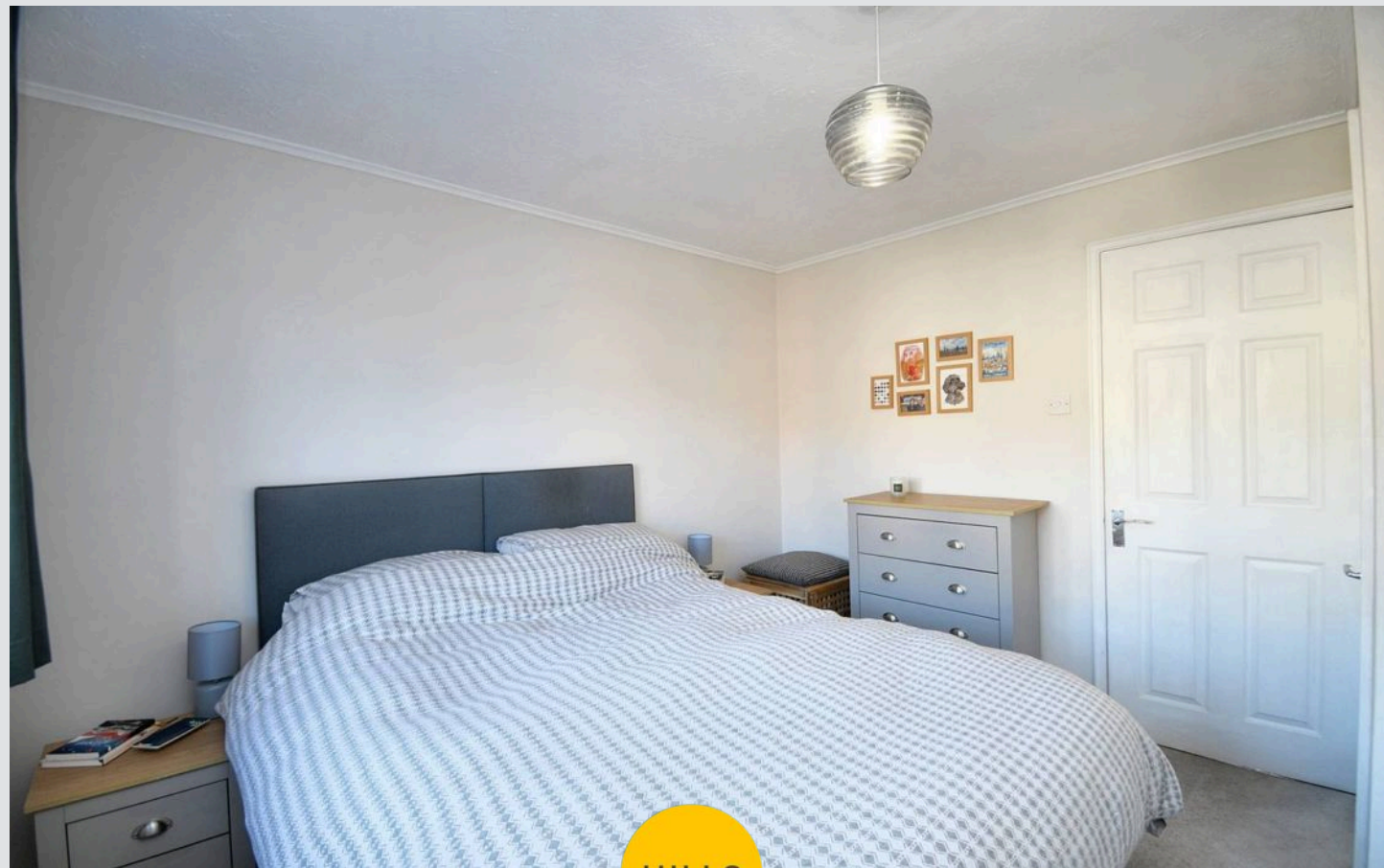
Bathroom

6' 5" x 5' 3" (1.96m x 1.60m)

Featuring a three piece suite including a bath with shower over, hand wash basin and W.C. Complete with a ceiling light point, double glazed window and heated towel rail. Fitted with tiled walls and laminate tile flooring.

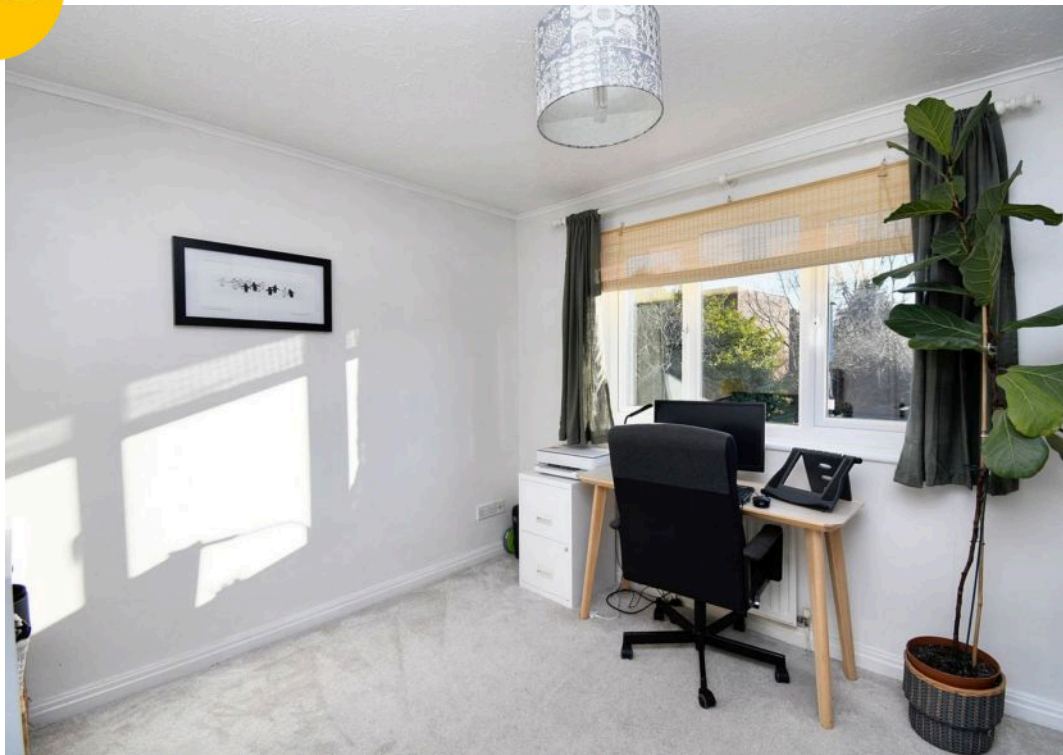
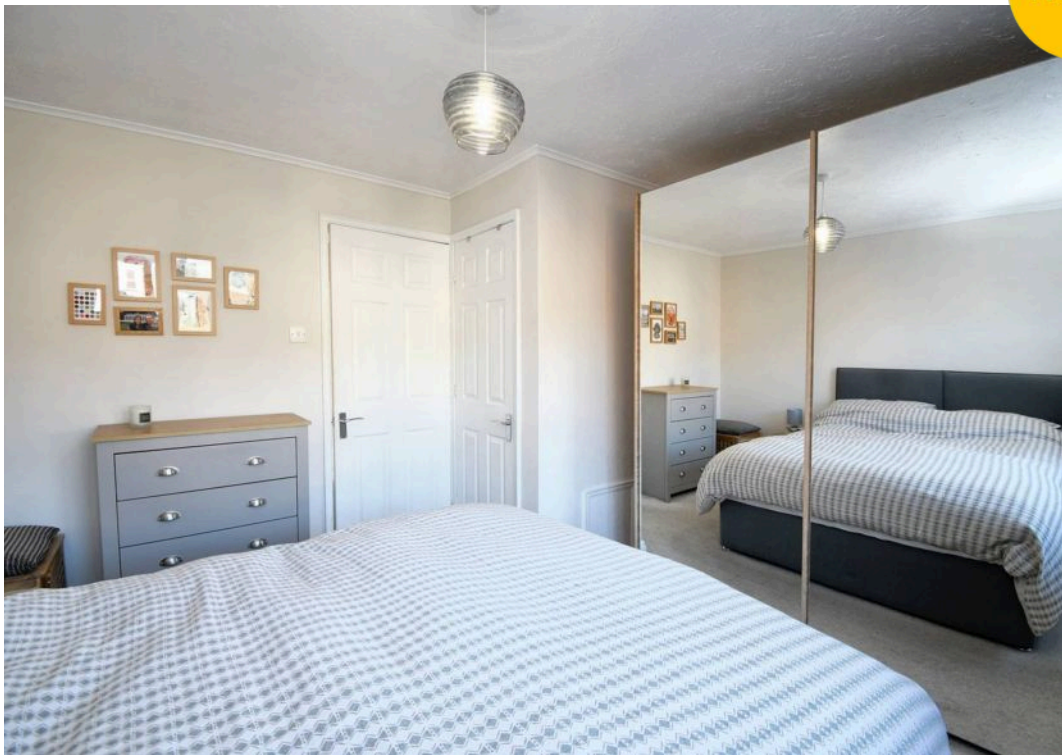
External

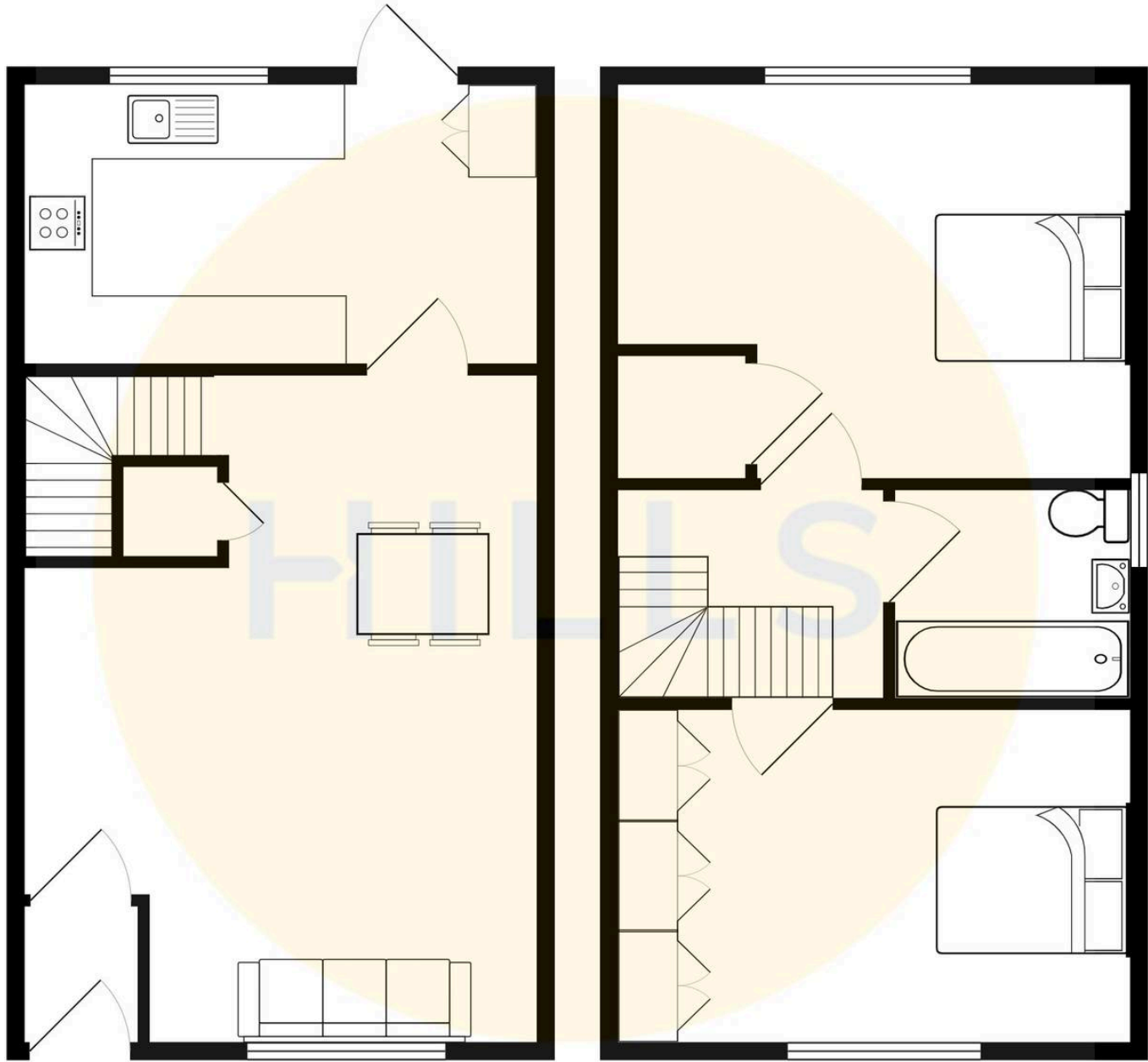
To the rear of the property is a garden with Indian stone paving, lawn with planted borders and gated access to the front. Off road parking for two cars.





HILLS







Hills | Salfords Estate Agent

Hills Residential, Sentinel House Albert Street – M30 0SS

0161 707 4900

sales@hills.agency

www.hills.agency/



THE PROPERTY MISDESCRIPTIONS ACT 1991 The Agent has not tested any apparatus, equipment, fixtures and fittings or services and so cannot verify that they are in working order or fit for the purpose. A Buyer is advised to obtain verification from their Solicitor or Surveyor. References to the Tenure of a Property are based on information supplied by the Seller. The Agent has not had sight of the title documents. A Buyer is advised to obtain verification from their Solicitor. You are advised to check the availability of this property before travelling any distance to view. Every effort and precaution has been made to ensure these particulars are correct and not misleading but their accuracy is not guaranteed nor do they form part of any contract. If there is any point which is of particular importance to you, please contact us and we will provide any information you require. This is advisable, particularly if you intend to travel some distance to view the property. The mention of any appliances and services within these details does not imply that they are in full and efficient working order. These particulars are in draft form awaiting Vendors confirmation of their accuracy. These details must therefore be taken as a guide only.