



Hartshead Crescent, Failsworth  
Manchester

HILLS

£975,000



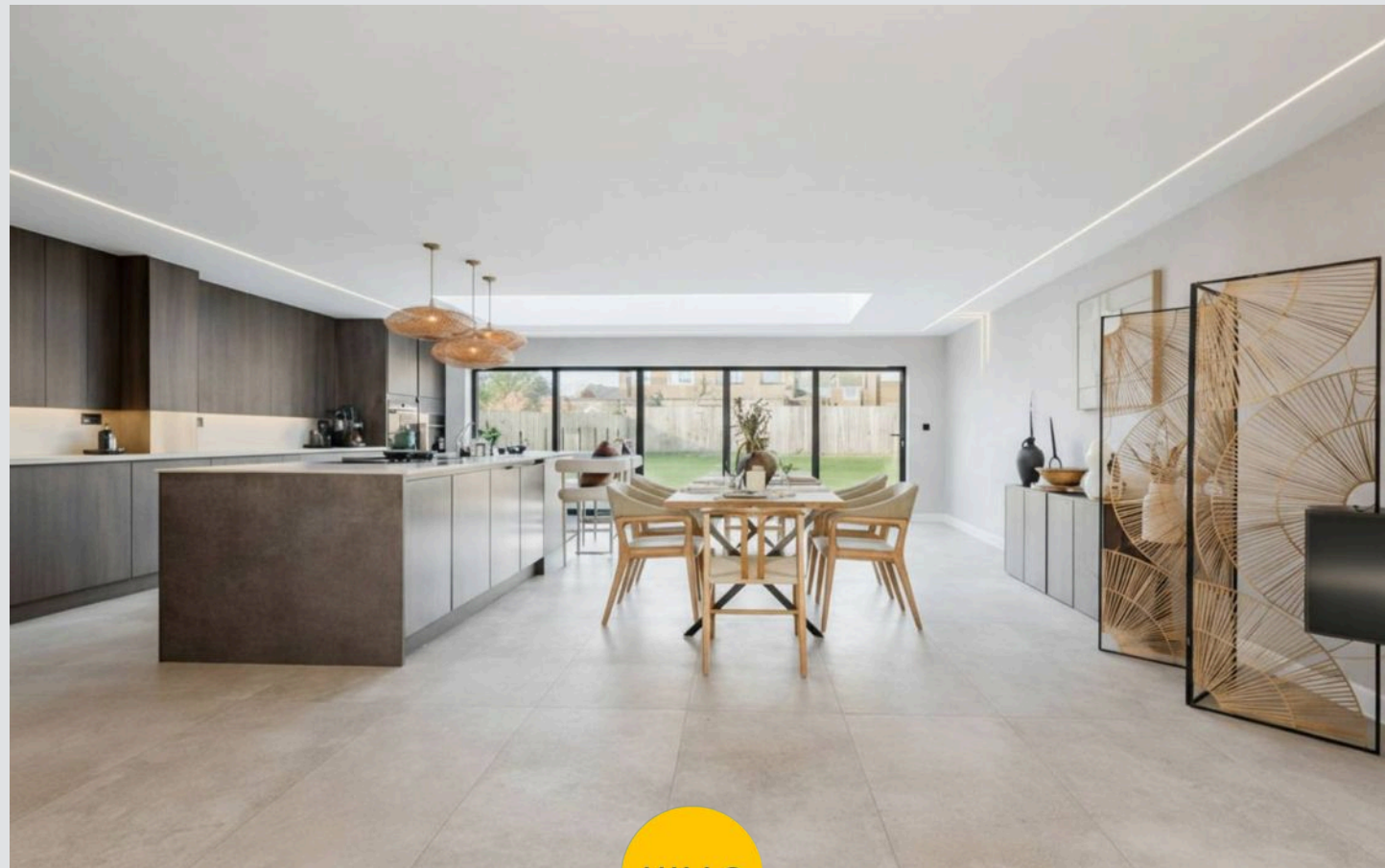
# 15 Hartshead Crescent

Failsworth, Manchester

Take a look at this truly remarkable luxury home, where cutting-edge contemporary design meets the charm of village living. Positioned in the heart of the highly sought-after Woodhouses Village. Council Tax band: E

Tenure: Freehold

- Exceptional six-bedroom detached home set within the sought-after Woodhouses Village
- Finished to an outstanding specification with bespoke craftsmanship throughout
- Striking open-plan kitchen, dining, and living space designed for modern family living
- Bespoke designer kitchen by Alexandra Designs at Arthur Morgan with premium integrated appliances
- Feature microcement fire wall with black bioethanol hanging fireplace
- Six full-sized double bedrooms offering flexible accommodation
- Impressive principal bedroom with floor-to-ceiling glazing, countryside views, and luxury concealed en-suite
- Contemporary microcement bathrooms with floating sanitaryware and black tap fittings
- Underfloor heating throughout with voice-activated Wi-Fi lighting and heating system



HILLS



## Entrance Hallway

### Lounge

20' 5" x 11' 9" (6.22m x 3.59m)

### Kitchen / Diner

23' 0" x 22' 2" (7.02m x 6.76m)

### Utility Room

8' 3" x 7' 9" (2.51m x 2.36m)

### Office

11' 5" x 8' 2" (3.49m x 2.48m)

### Downstairs Shower Room

### Bedroom Four

13' 11" x 11' 3" (4.24m x 3.42m)

### Bedroom Five

15' 9" x 9' 9" (4.81m x 2.98m)

### Bedroom Six

10' 10" x 8' 10" (3.30m x 2.70m)

### Landing

11' 11" x 11' 2" (3.63m x 3.40m)

### Bedroom One

28' 11" x 16' 2" (8.82m x 4.94m)

### En suite

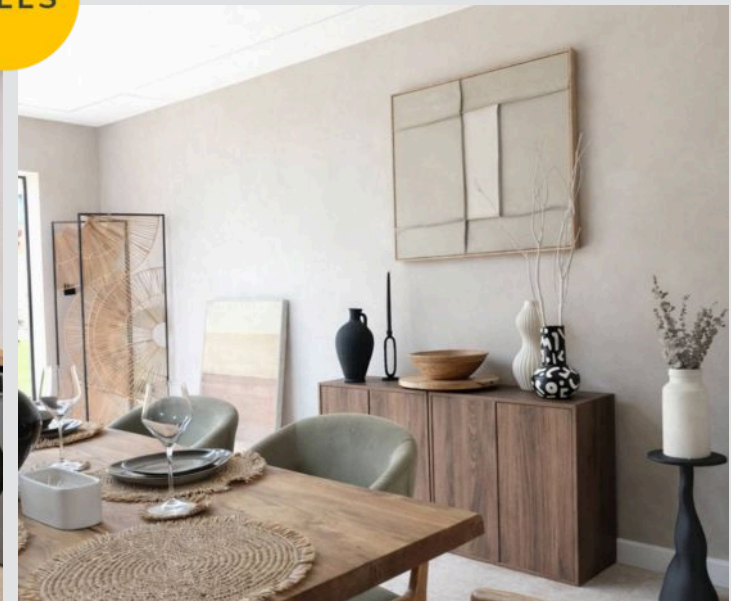
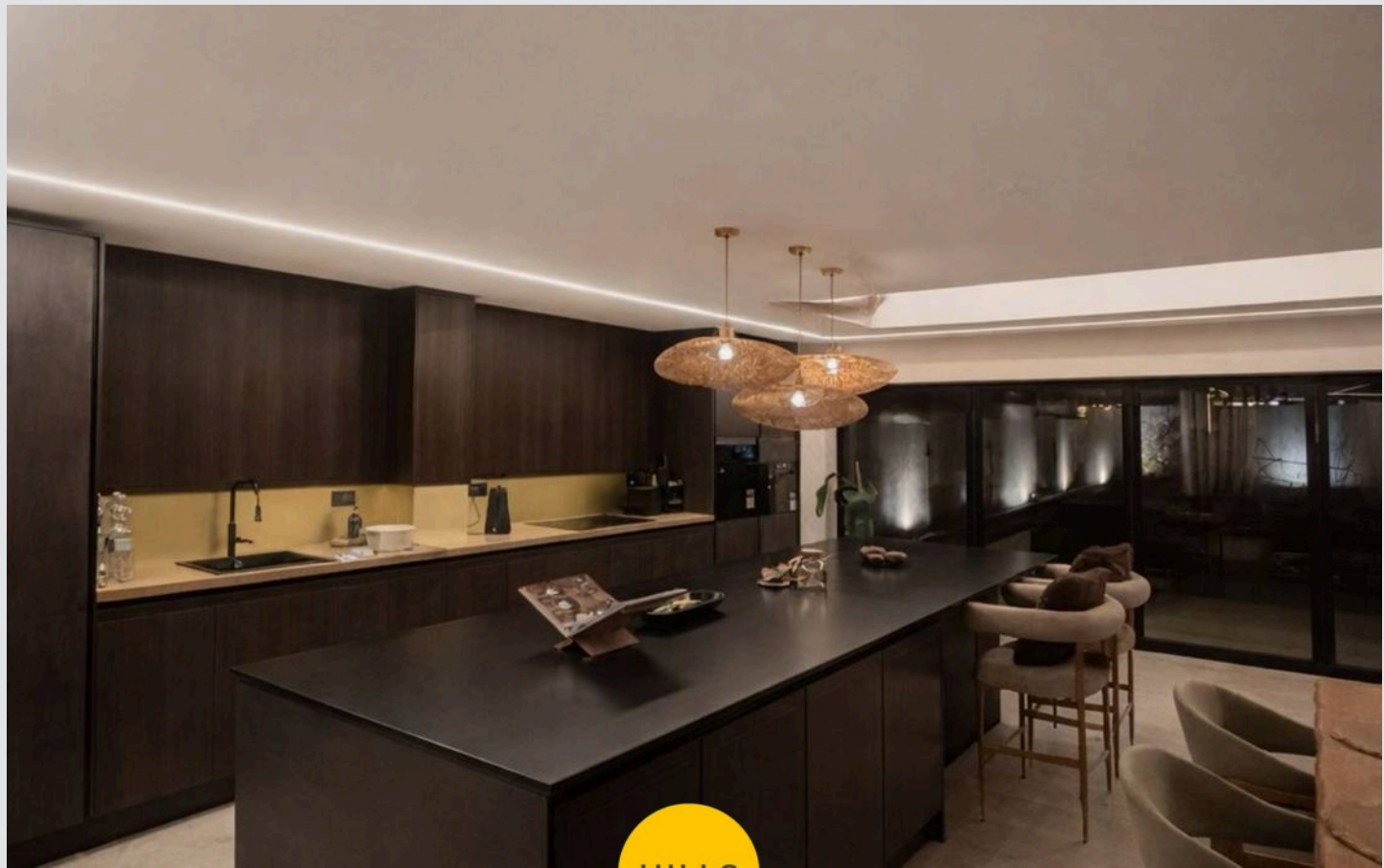
### Bedroom Two

15' 5" x 12' 4" (4.71m x 3.76m)

### Bedroom Three

12' 5" x 11' 2" (3.79m x 3.40m)

### Bathroom





## Entrance Hallway

### Lounge

20' 5" x 11' 9" (6.22m x 3.59m)

### Kitchen / Diner

23' 0" x 22' 2" (7.02m x 6.76m)

### Utility Room

8' 3" x 7' 9" (2.51m x 2.36m)

### Office

11' 5" x 8' 2" (3.49m x 2.48m)

### Downstairs Shower Room

### Bedroom Four

13' 11" x 11' 3" (4.24m x 3.42m)

### Bedroom Five

15' 9" x 9' 9" (4.81m x 2.98m)

### Bedroom Six

10' 10" x 8' 10" (3.30m x 2.70m)

### Landing

11' 11" x 11' 2" (3.63m x 3.40m)

### Bedroom One

28' 11" x 16' 2" (8.82m x 4.94m)

### En suite

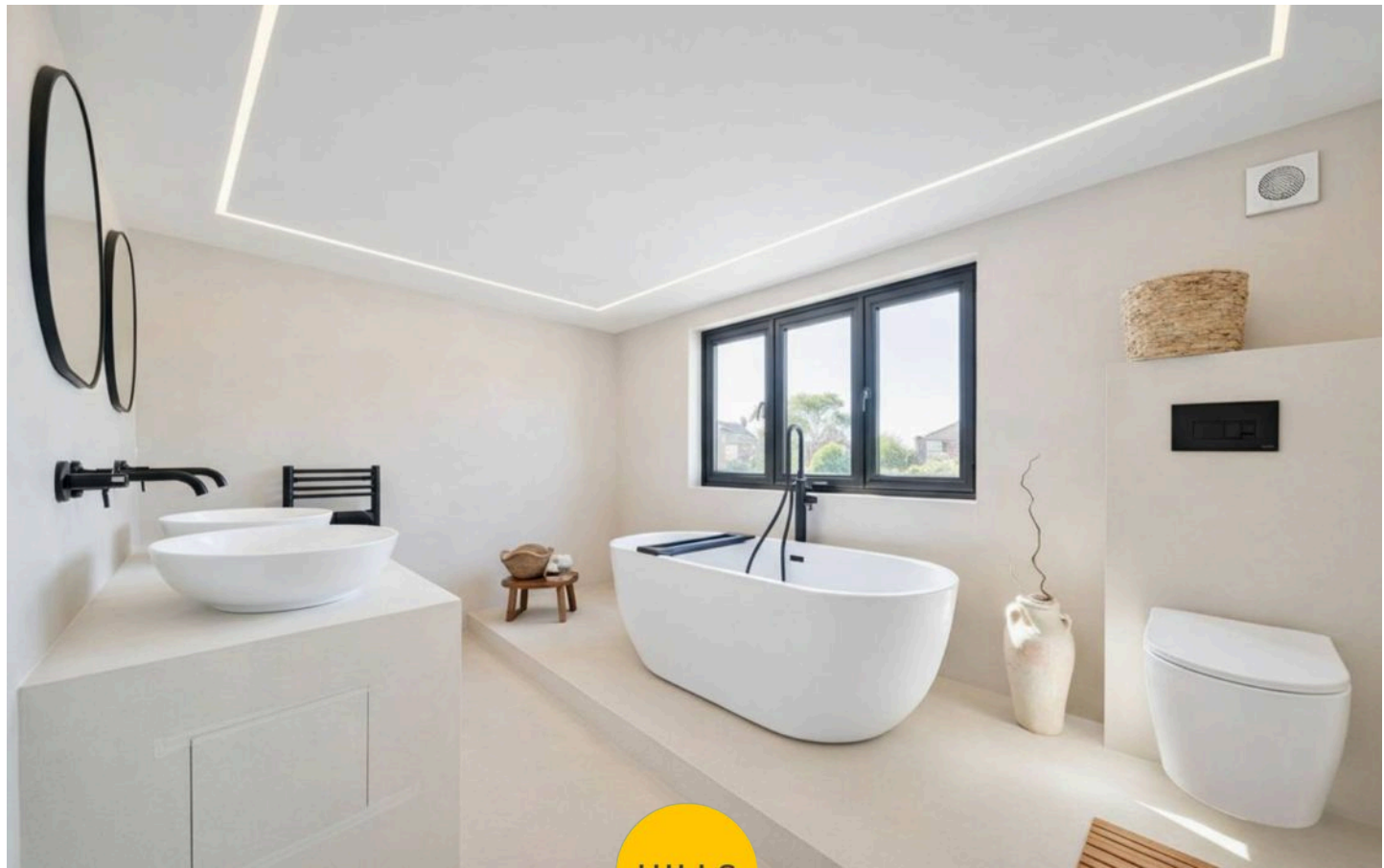
### Bedroom Two

15' 5" x 12' 4" (4.71m x 3.76m)

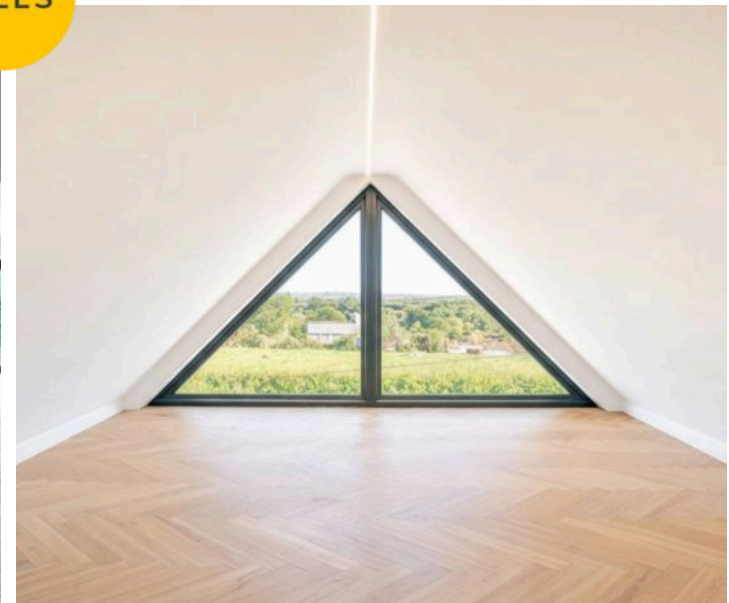
### Bedroom Three

12' 5" x 11' 2" (3.79m x 3.40m)

### Bathroom

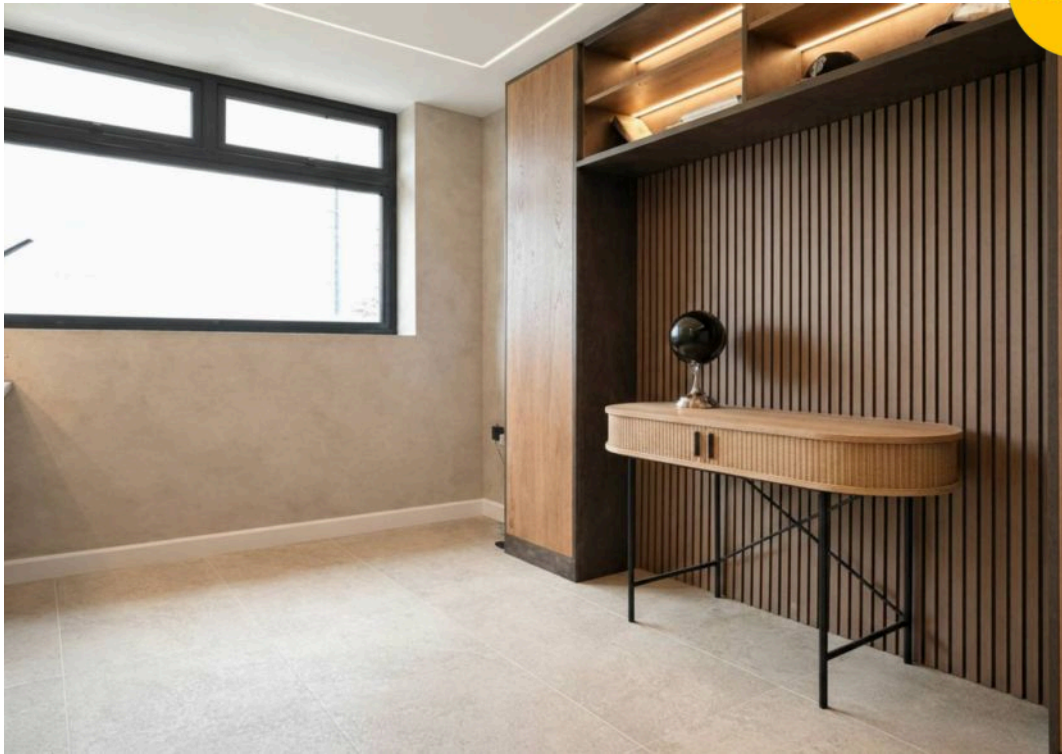


HILLS

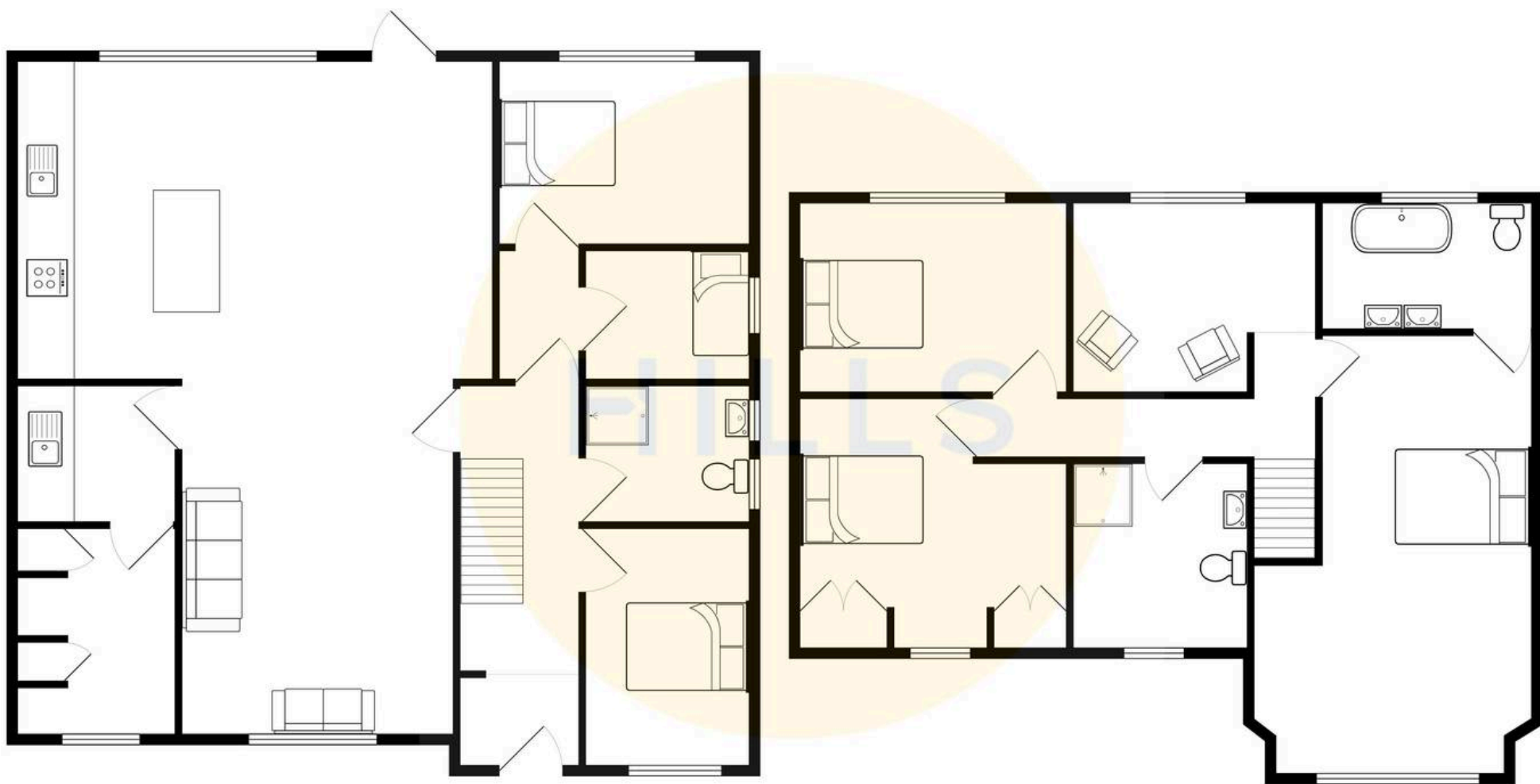




HILLS









## Hills | Salfords Estate Agent

Hills Residential, Sentinel House Albert Street – M30 0SS

0161 707 4900

[sales@hills.agency](mailto:sales@hills.agency)

[www.hills.agency/](http://www.hills.agency/)



By law, we are required to conduct anti-money laundering checks on all potential buyers and sellers. In line with HMRC guidelines, our trusted partner, Coadjute, will securely manage these checks on our behalf. A non-refundable fee of £45 + VAT per person will apply, and Coadjute will handle the payment. Once an offer is accepted, Coadjute will send a secure link for you to complete the biometric checks. These checks must be completed before we can send the memorandum of sale to all parties. PLEASE NOTE: The Agent has not tested any equipment, fixtures, fittings or services so cannot verify that they are in working order or fit for the purpose. References to the properties tenure are based on information supplied by the seller. You are advised to check the availability of this property before travelling any distance to view. Every effort has been made to ensure these particulars are correct and not misleading but their accuracy is not guaranteed nor do they form part of any contract.