



Lostock Road

Salford



£280,000

# Lostock Road

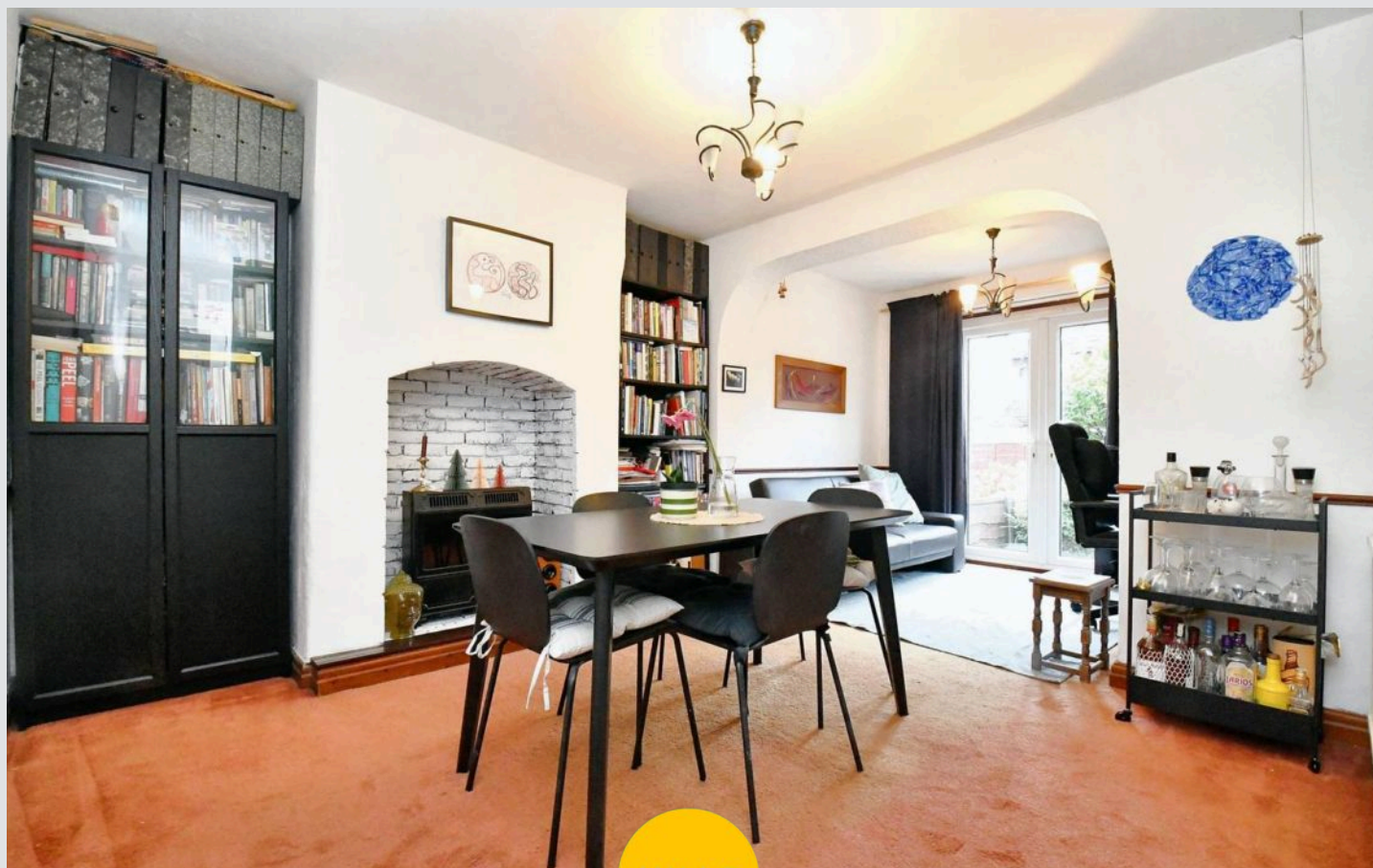
Salford

\*Full Width Extended Three Bedroom Semi-Detached Property Located Within Walking Distance of Buile Hill Park and Within Easy Access of Salford Quays & Media City!\*

Council Tax band: C

Tenure: Leasehold

- Full Width Extended Three Bedroom Semi-Detached Property
- Located Just a Short Walk from Buile Hill Park
- Within Easy Access of Salford Quays & Media City
- Bay-Fronted Lounge and an Extended Dining Room/Office Space
- Extended Fitted Kitchen
- Three Well-Proportioned Bedrooms
- Modern Three-Piece Bathroom
- Garage to the Side for Storage
- Driveway for Off-Road Parking to the Front and a Low-Maintenance Garden to the Rear
- Close to Excellent Transport Links into Salford Quays, Media City and Manchester City Centre



**Porch**

**Entrance Hallway**

**Living Room**

12' 3" x 10' 0" (3.74m x 3.05m)

**Dining Room**

11' 4" x 10' 10" (3.46m x 3.29m)

**Sun Room/Office**

9' 3" x 5' 11" (2.81m x 1.80m)

**Kitchen**

1' 9" x 6' 9" (0.54m x 2.05m)

**Landing**

**Bedroom One**

11' 9" x 9' 10" (3.58m x 3.00m)

**Bedroom Two**

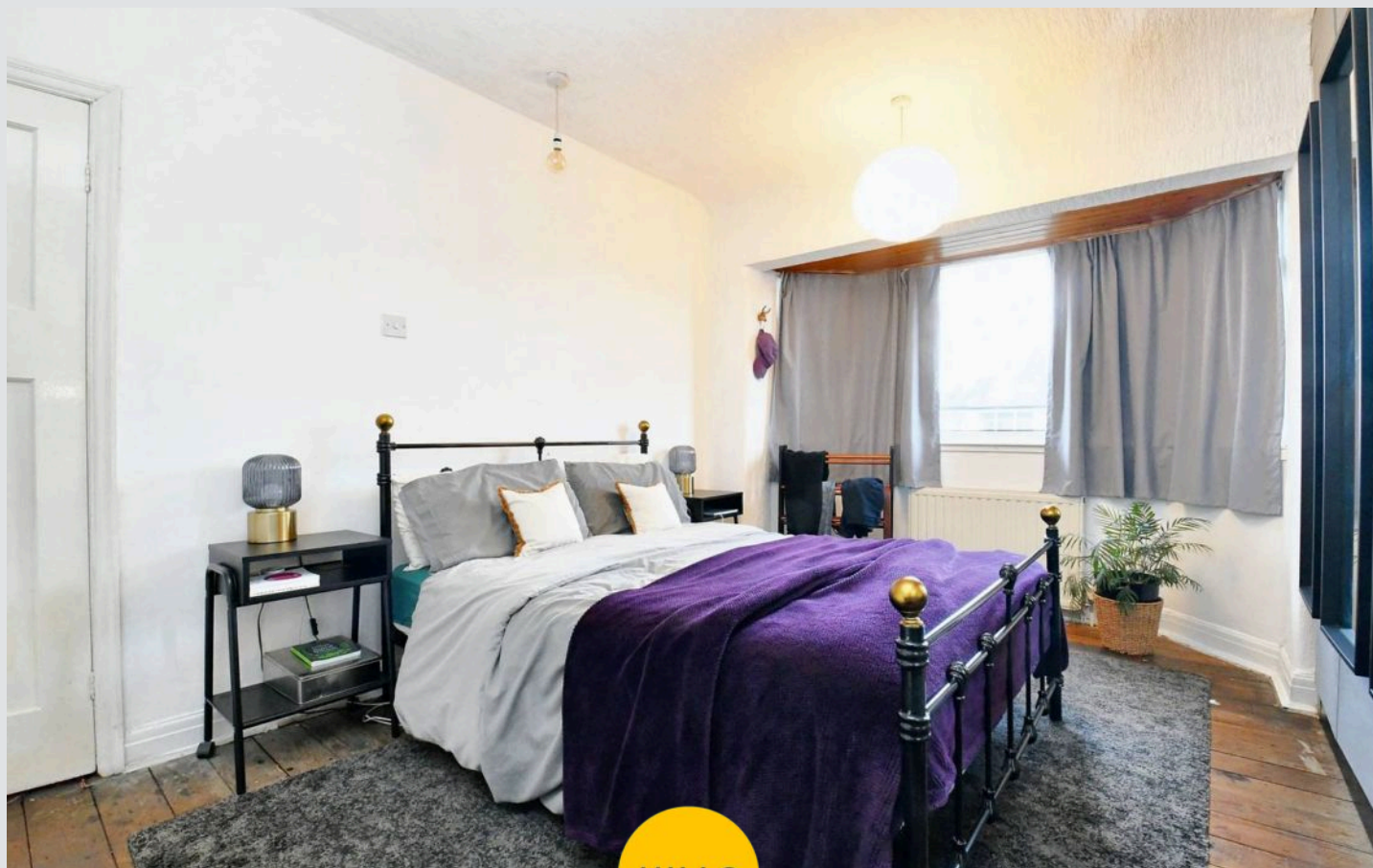
10' 0" x 9' 2" (3.06m x 2.80m)

**Bedroom Three**

8' 2" x 7' 7" (2.50m x 2.30m)

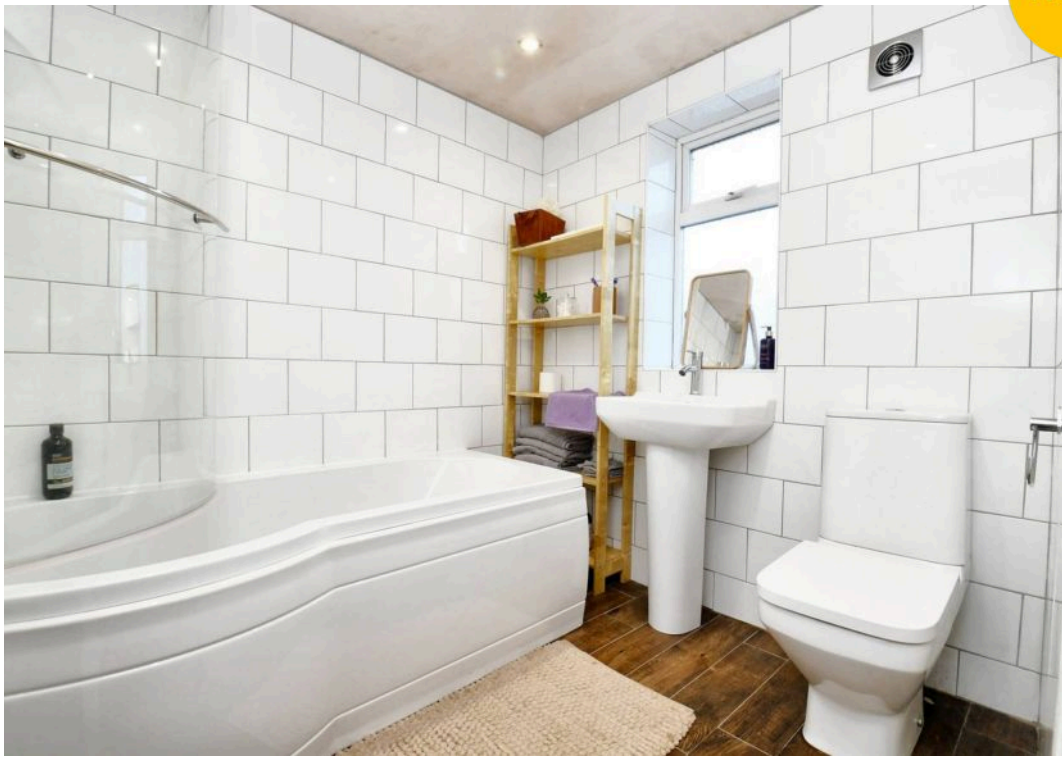
**Bathroom**

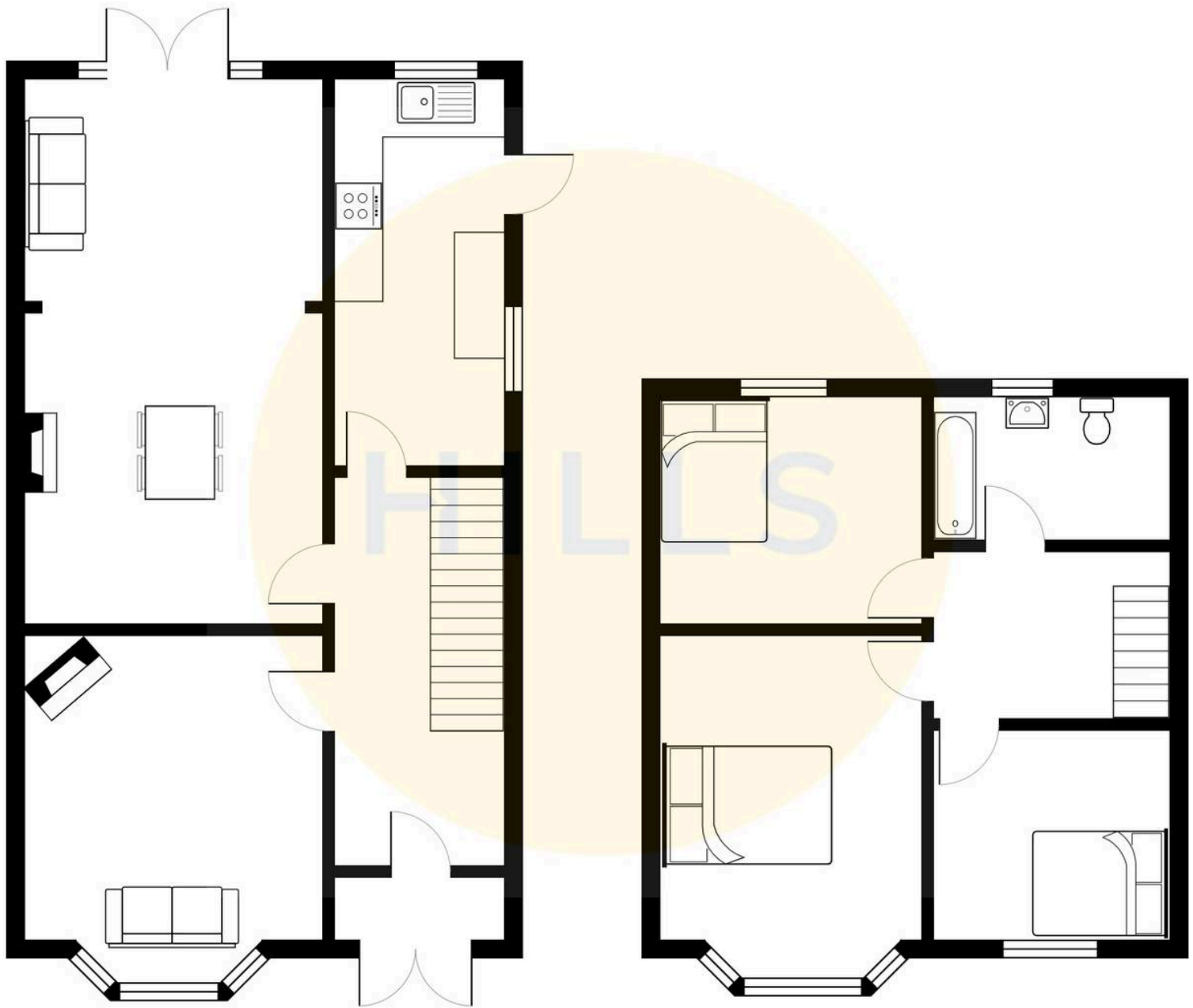
7' 0" x 6' 5" (2.14m x 1.95m)





HILLS







## Hills | Salfords Estate Agent

Hills Residential, Sentinel House Albert Street - M30 0SS

0161 707 4900

[sales@hills.agency](mailto:sales@hills.agency)

[www.hills.agency/](http://www.hills.agency/)



By law, we are required to conduct anti-money laundering checks on all potential buyers and sellers. In line with HMRC guidelines, our trusted partner, Coadjute, will securely manage these checks on our behalf. A non-refundable fee of £45 + VAT per person will apply, and Coadjute will handle the payment. Once an offer is accepted, Coadjute will send a secure link for you to complete the biometric checks. These checks must be completed before we can send the memorandum of sale to all parties. PLEASE NOTE: The Agent has not tested any equipment, fixtures, fittings or services so cannot verify that they are in working order or fit for the purpose. References to the properties tenure are based on information supplied by the seller. You are advised to check the availability of this property before travelling any distance to view. Every effort has been made to ensure these particulars are correct and not misleading but their accuracy is not guaranteed nor do they form part of any contract.