



Westminster Road, Eccles

Manchester



Offers in Region of **£850,000**

Westminster Road

Eccles, Manchester

Situated in one of Manchester's premier residential locations, on the tree lined Westminster Road is this beautiful and spacious seven bedroom family home full of original features.

Council Tax band: G

- Seven bedroom family home situated in one of Manchester's premier residential locations
- Large conservatory and multiple living and dining spaces
- Set in generous gardens to the front and rear. To the rear is a brick build outhouse that could offer development potential
- Priced to reflect the need for a degree of modernisation
- Downstairs W.C and separate utility room
- Amazing potential to create a stunning living/entertaining space across the ground floor
- Seven double bedrooms with a south facing balcony to the master bedroom on the first floor
- Stunning stained glass windows
- Located within walking distance of the vibrant Monton village with its fine array of bars, restaurants and cafes
- Easy access to transport links into Salford Quays, Salford Royal Hospital and Manchester City Centre



Entrance Hallway

16' 7" x 9' 8" (5.05m x 2.95m)

Reception Room One

24' 4" x 18' 0" (7.42m x 5.49m)

Reception Room Two

15' 7" x 13' 9" (4.75m x 4.19m)

Kitchen / Diner

17' 1" x 12' 1" (5.21m x 3.68m)

Pantry

5' 8" x 3' 3" (1.73m x 0.99m)

Utility Room

11' 1" x 6' 0" (3.38m x 1.83m)

Conservatory

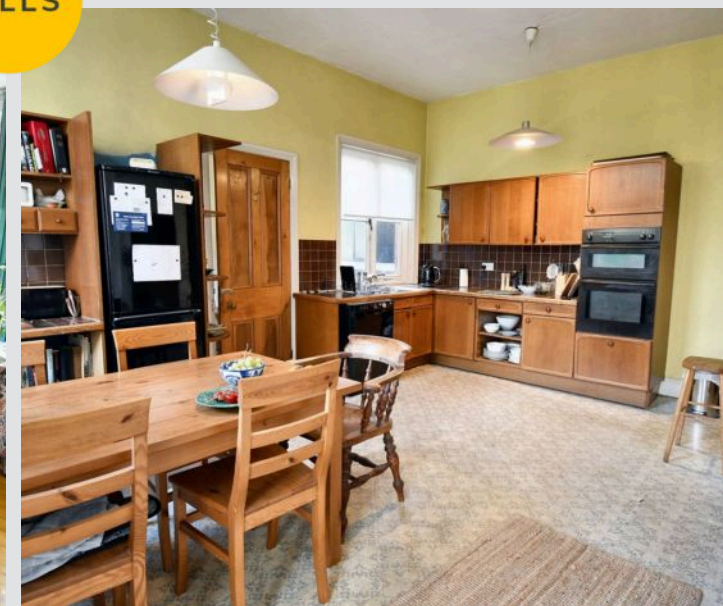
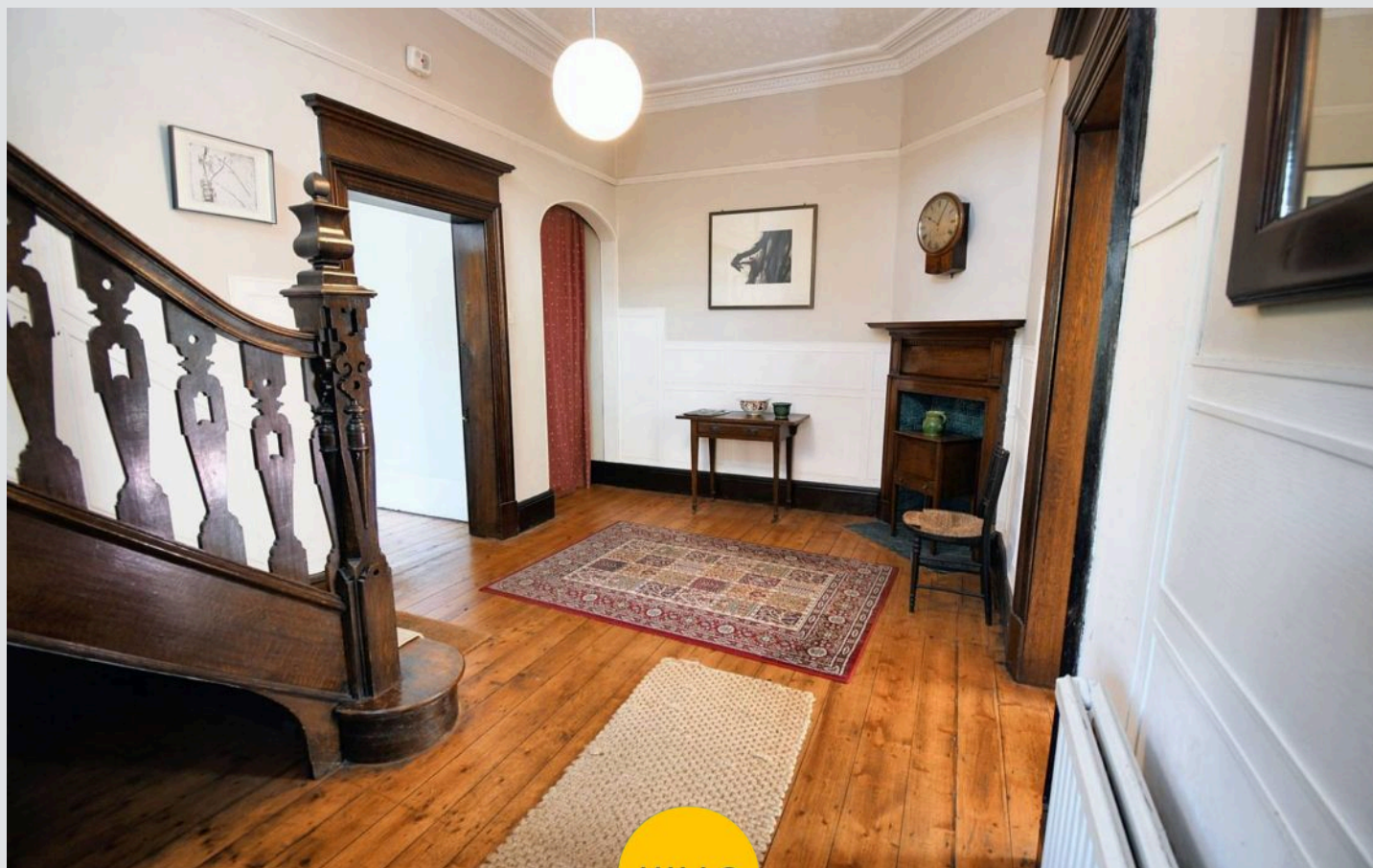
20' 0" x 14' 3" (6.10m x 4.34m)

Downstairs W.C.

7' 9" x 4' 5" (2.36m x 1.35m)

Cloak Room

8' 8" x 3' 3" (2.64m x 0.99m)



Landing

Bedroom One

23' 1" x 17' 7" (7.04m x 5.36m)

Bedroom Two

13' 9" x 13' 4" (4.19m x 4.06m)

Bedroom Three

13' 6" x 12' 3" (4.11m x 3.73m)

Bathroom

10' 8" x 7' 9" (3.25m x 2.36m)

W.C.

7' 4" x 2' 9" (2.24m x 0.84m)

Landing

Bedroom Four

17' 8" x 24' 6" (5.38m x 7.47m)

Bedroom Five

14' 9" x 9' 8" (4.50m x 2.95m)

Bedroom Six

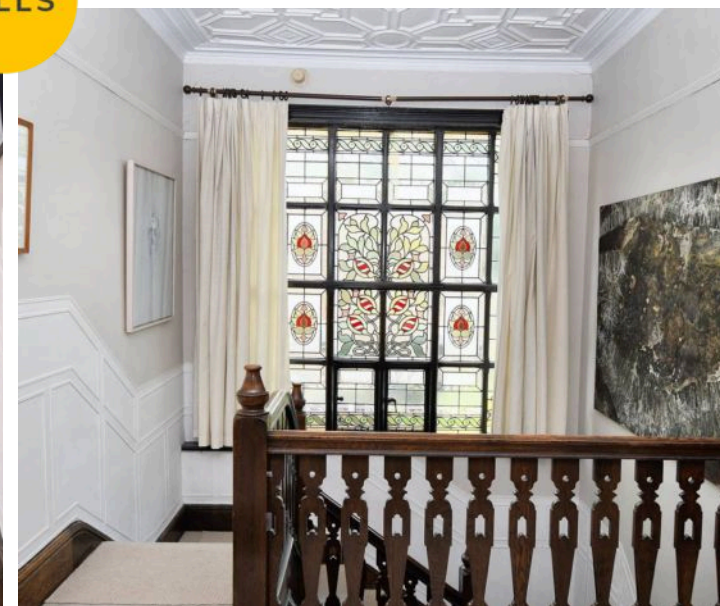
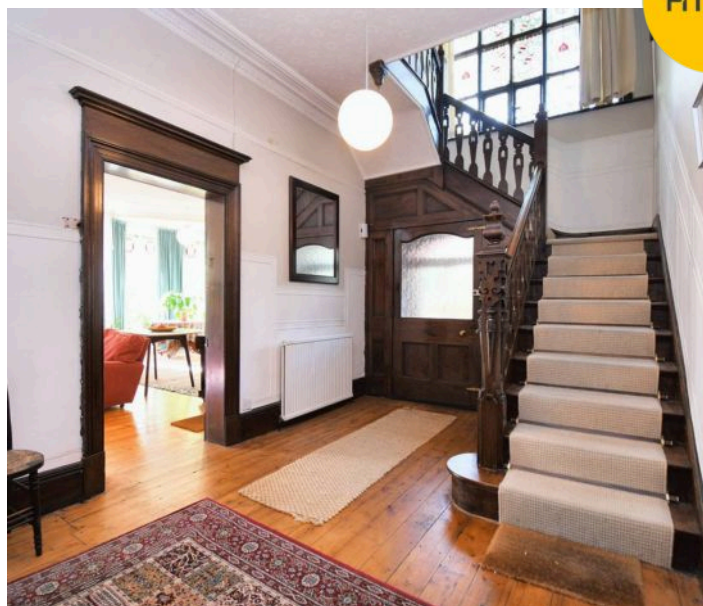
13' 4" x 9' 8" (4.06m x 2.95m)

Bedroom Seven

17' 7" x 15' 9" (5.36m x 4.80m)

Shower Room

15' 0" x 4' 7" (4.57m x 1.40m)



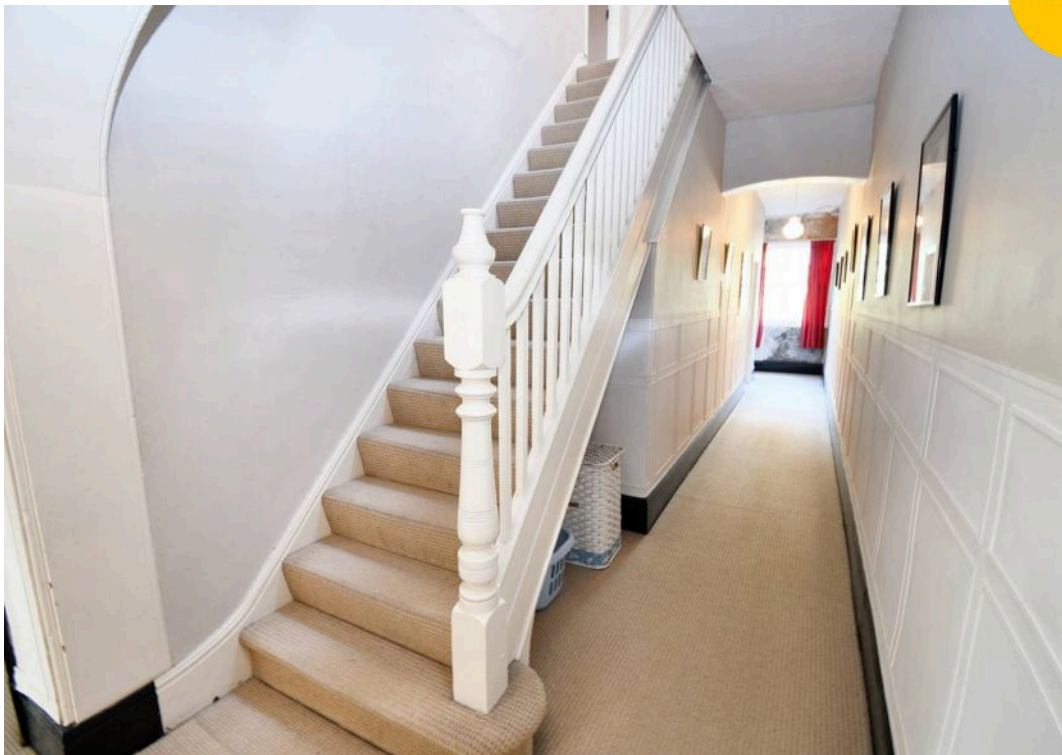


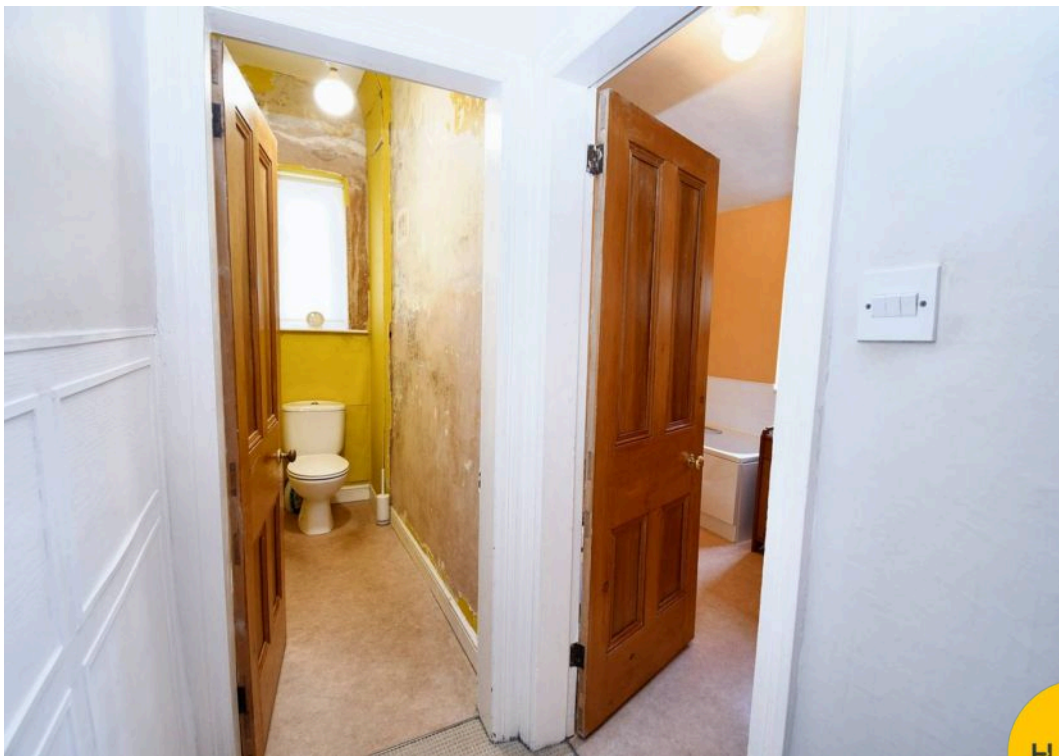
HILLS



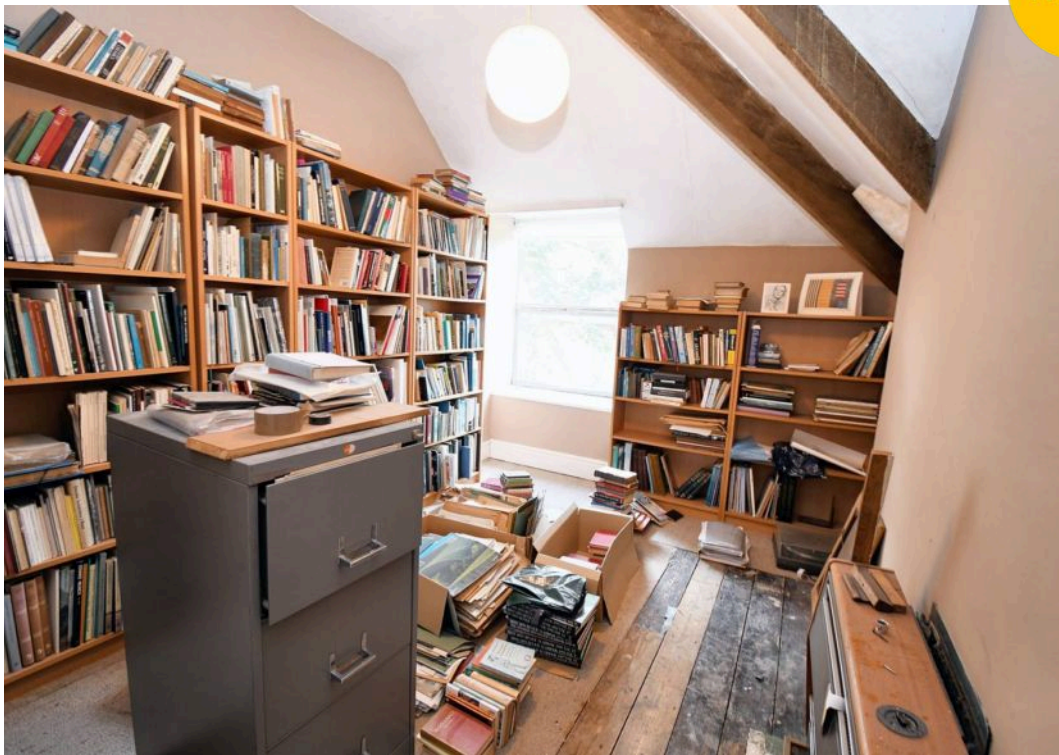


HILLS

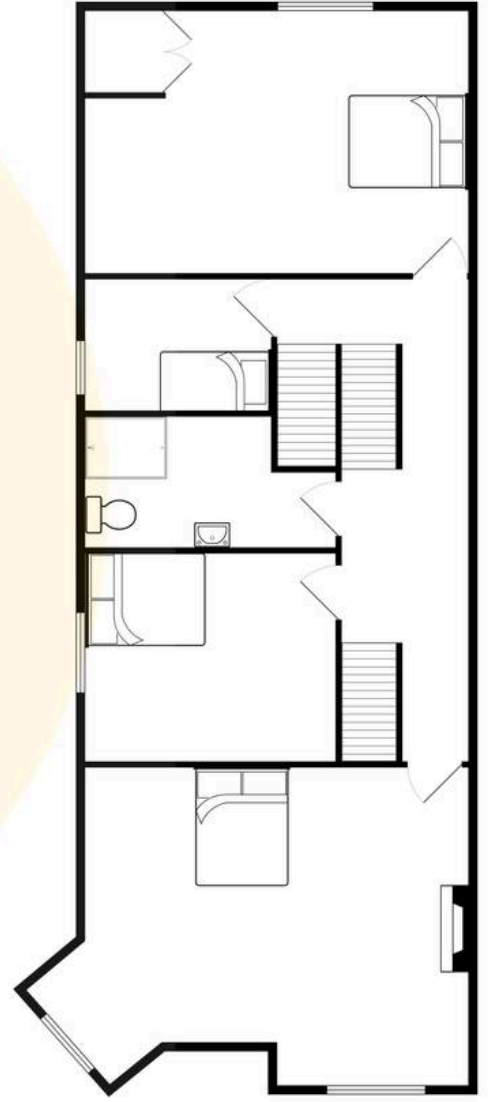
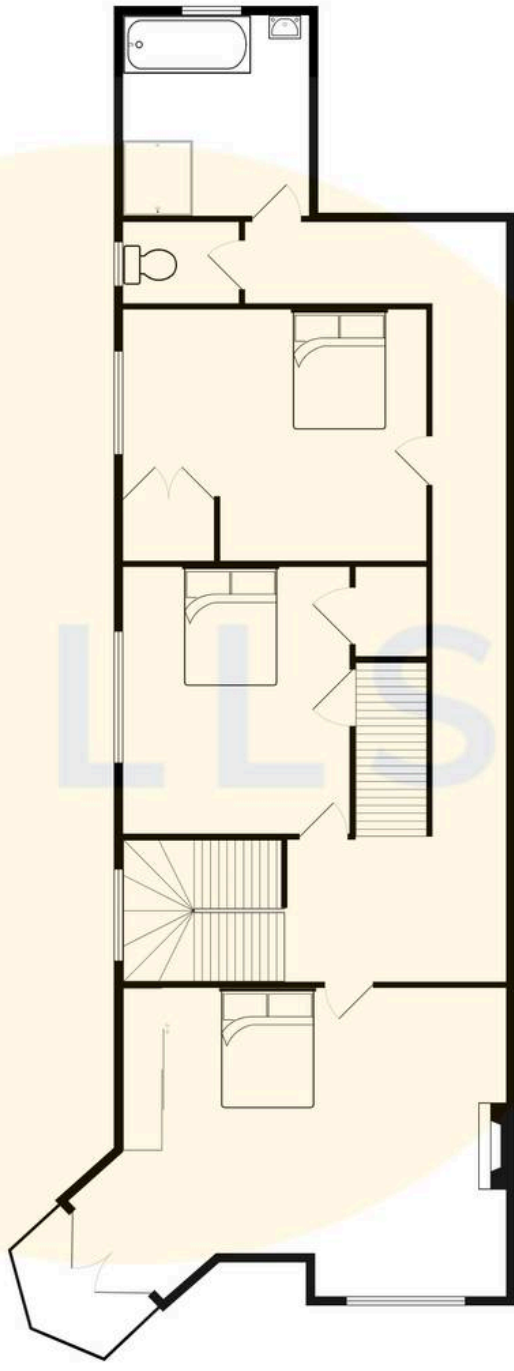
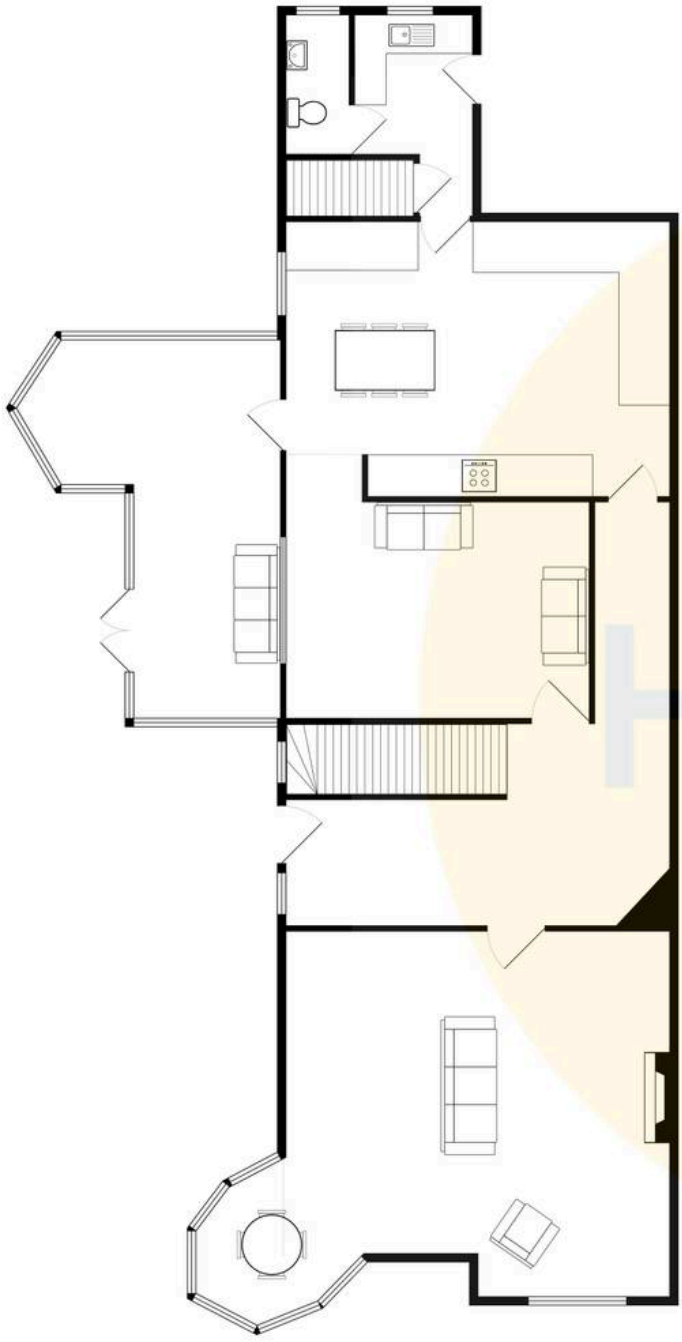




HILLS









Hills | Salfords Estate Agent

Hills Residential, Sentinel House Albert Street – M30 0SS

0161 707 4900

sales@hills.agency

www.hills.agency/



THE PROPERTY MISDESCRIPTIONS ACT 1991 The Agent has not tested any apparatus, equipment, fixtures and fittings or services and so cannot verify that they are in working order or fit for the purpose. A Buyer is advised to obtain verification from their Solicitor or Surveyor. References to the Tenure of a Property are based on information supplied by the Seller. The Agent has not had sight of the title documents. A Buyer is advised to obtain verification from their Solicitor. You are advised to check the availability of this property before travelling any distance to view. Every effort and precaution has been made to ensure these particulars are correct and not misleading but their accuracy is not guaranteed nor do they form part of any contract. If there is any point which is of particular importance to you, please contact us and we will provide any information you require. This is advisable, particularly if you intend to travel some distance to view the property. The mention of any appliances and services within these details does not imply that they are in full and efficient working order. These particulars are in draft form awaiting Vendors confirmation of their accuracy. These details must therefore be taken as a guide only.