



Willow Tree Court Aldred Street, Eccles
Manchester



Offers Over £130,000

Willow Tree Court

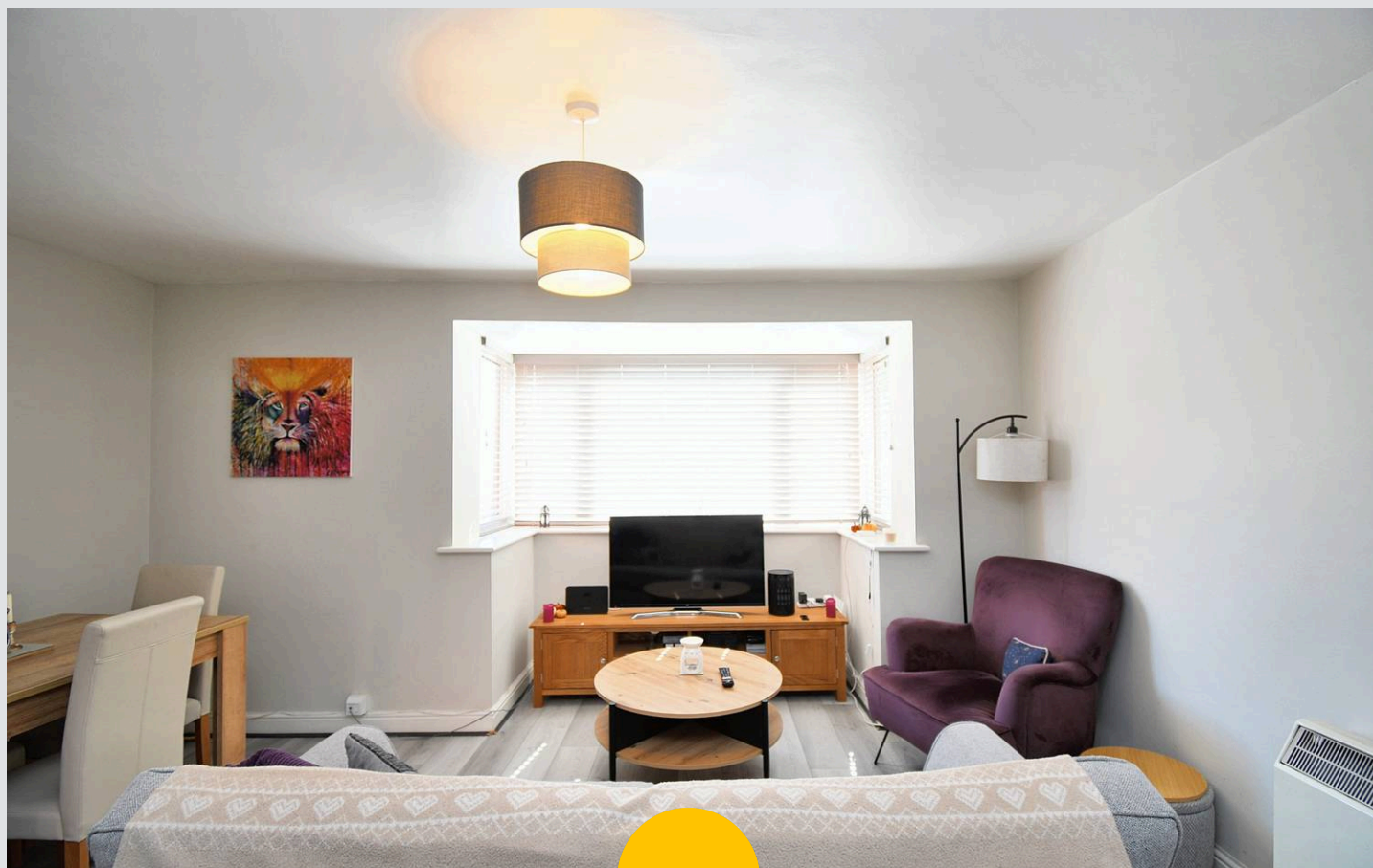
Manchester

Charming two bed ground floor flat in convenient location. Bright open-plan lounge, separate kitchen, Two double bedrooms (master with fitted wardrobes), Three piece bathroom. Well-kept communal areas with allocated parking. Short stroll from Monton Village. Excellent local amenities and transport links for easy commuting and daily essentials.

Council Tax band: B

Tenure: Leasehold

- Perfect First Time Buy or Downsize
- Located on the Ground Floor
- Open plan Lounge and Dining Space
- Separate Fitted Kitchen
- Two Double Bedrooms, Master with Fitted Wardrobes
- Three Piece Bathroom Suite
- Well Kept Communal Areas & Allocated Parking
- Short Walk to Monton Village down the Bridgewater Canal
- Well Served by Local Amenities, Public Transport & Motorway Links
- Fully Double Glazed and Electric Climastar Radiators



HILLS



Entrance Hallway

Lounge / Diner

18' 5" x 14' 8" (5.61m x 4.47m)

Kitchen

7' 6" x 7' 2" (2.29m x 2.18m)

Bedroom One

10' 9" x 9' 7" (3.28m x 2.92m)

Bedroom Two

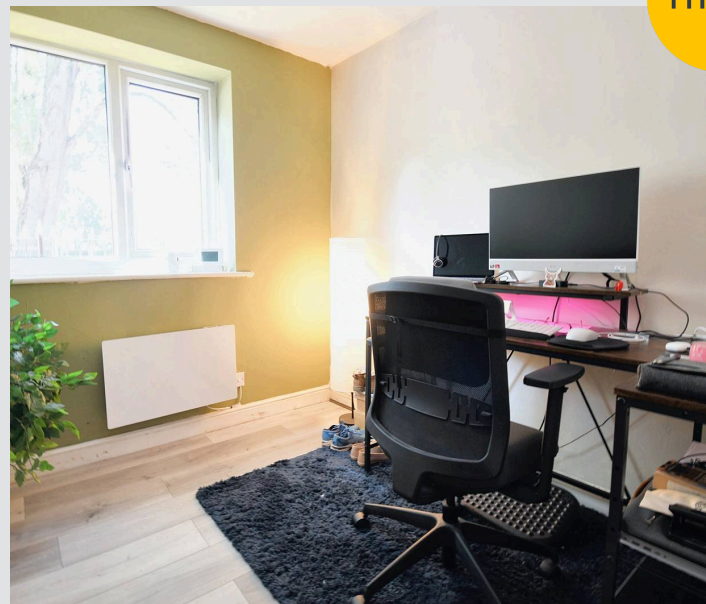
7' 5" x 7' 1" (2.26m x 2.16m)

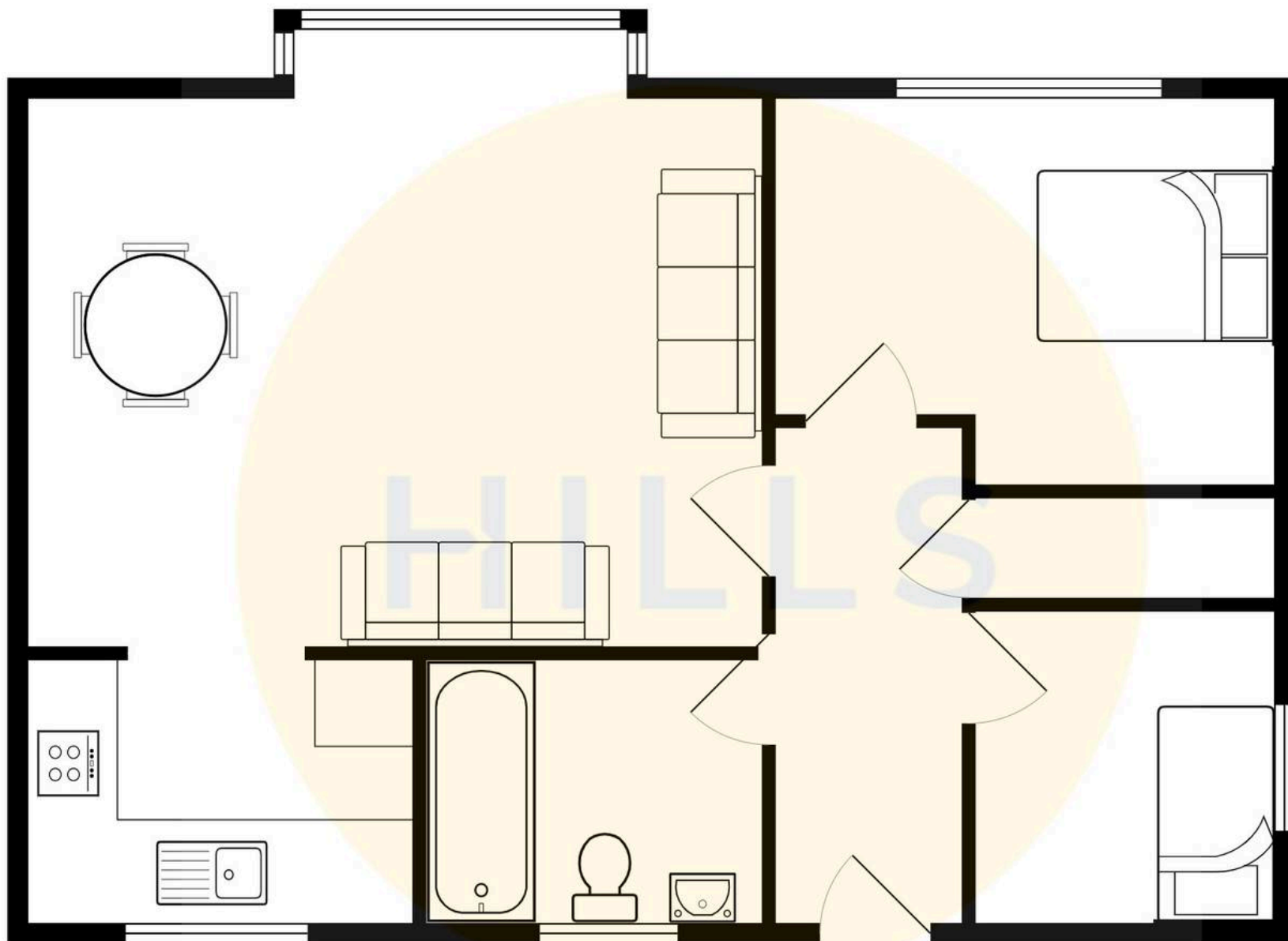
Bathroom

7' 1" x 5' 6" (2.16m x 1.68m)



HILLS







Hills | Salfords Estate Agent

Hills Residential, Sentinel House Albert Street – M30 0SS

0161 707 4900

sales@hills.agency

www.hills.agency/



THE PROPERTY MISDESCRIPTIONS ACT 1991 The Agent has not tested any apparatus, equipment, fixtures and fittings or services and so cannot verify that they are in working order or fit for the purpose. A Buyer is advised to obtain verification from their Solicitor or Surveyor. References to the Tenure of a Property are based on information supplied by the Seller. The Agent has not had sight of the title documents. A Buyer is advised to obtain verification from their Solicitor. You are advised to check the availability of this property before travelling any distance to view. Every effort and precaution has been made to ensure these particulars are correct and not misleading but their accuracy is not guaranteed nor do they form part of any contract. If there is any point which is of particular importance to you, please contact us and we will provide any information you require. This is advisable, particularly if you intend to travel some distance to view the property. The mention of any appliances and services within these details does not imply that they are in full and efficient working order. These particulars are in draft form awaiting Vendors confirmation of their accuracy. These details must therefore be taken as a guide only.