

Acresfield Road

Salford



In Excess of £425,000

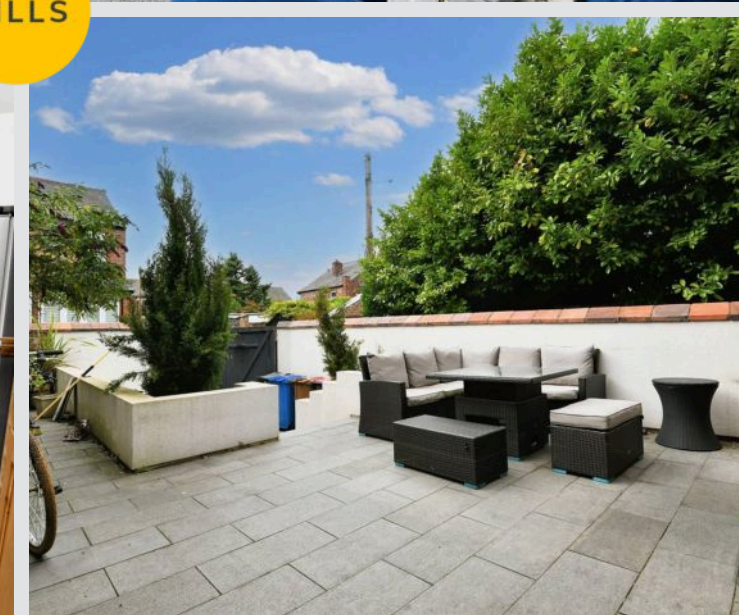
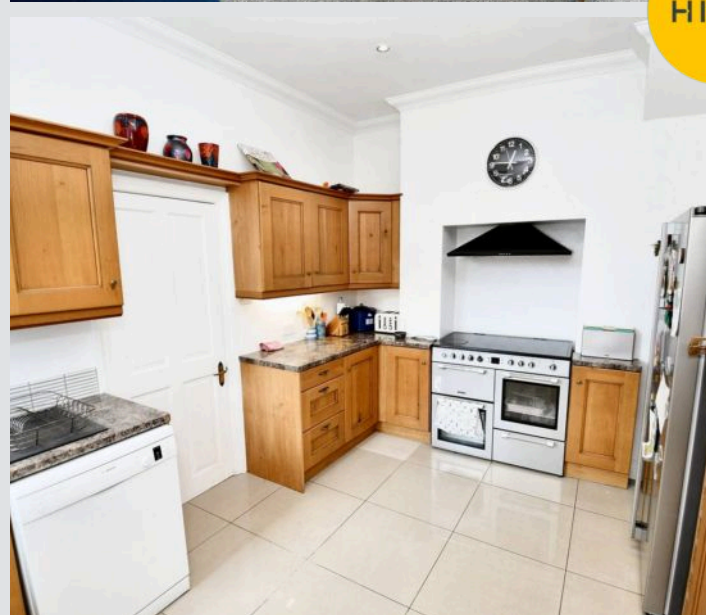
Acresfield Road

Salford

STOP! Take a Look at this Large, Four Bedroom Period Property! Providing an Abundance of Space, Featuring Two Reception Rooms, a Utility Room, Two Additional W/C's and a South-Facing Garden! Council Tax band: D

Tenure: Leasehold

- Spacious Four Bedroom Period Property Located in the Popular Irlam o' th' Heights
- Large Bay-Fronted Lounge and a Spacious Dining Room with Patio Doors to the Rear
- Modern Fitted Kitchen and a Separate Utility Room
- Benefits from a Downstairs W/C
- Four Well-Proportioned Bedrooms
- Modern Three-Piece Family Bathroom and an Additional W/C Upstairs
- South-Facing Garden to the Rear
- Just a Stone's Throw from Light Oaks Park and Close to Local Schooling
- Within Easy Access of Excellent Transport Links into Salford Quays, Media City and Manchester City Centre
- Viewing is Highly Recommended!



HILLS

Entrance Hallway

Downstairs W.C.

4' 10" x 2' 7" (1.47m x 0.78m)

Lounge

13' 1" x 12' 0" (4.00m x 3.67m)

Dining Room

16' 6" x 12' 0" (5.02m x 3.65m)

Kitchen

10' 7" x 10' 8" (3.22m x 3.24m)

Utility Room

8' 3" x 6' 0" (2.51m x 1.84m)

Landing

Bedroom One

16' 7" x 12' 0" (5.05m x 3.67m)

Bedroom Two

15' 4" x 13' 11" (4.68m x 4.25m)

Bedroom Three

9' 6" x 8' 10" (2.89m x 2.69m)

Bedroom Four

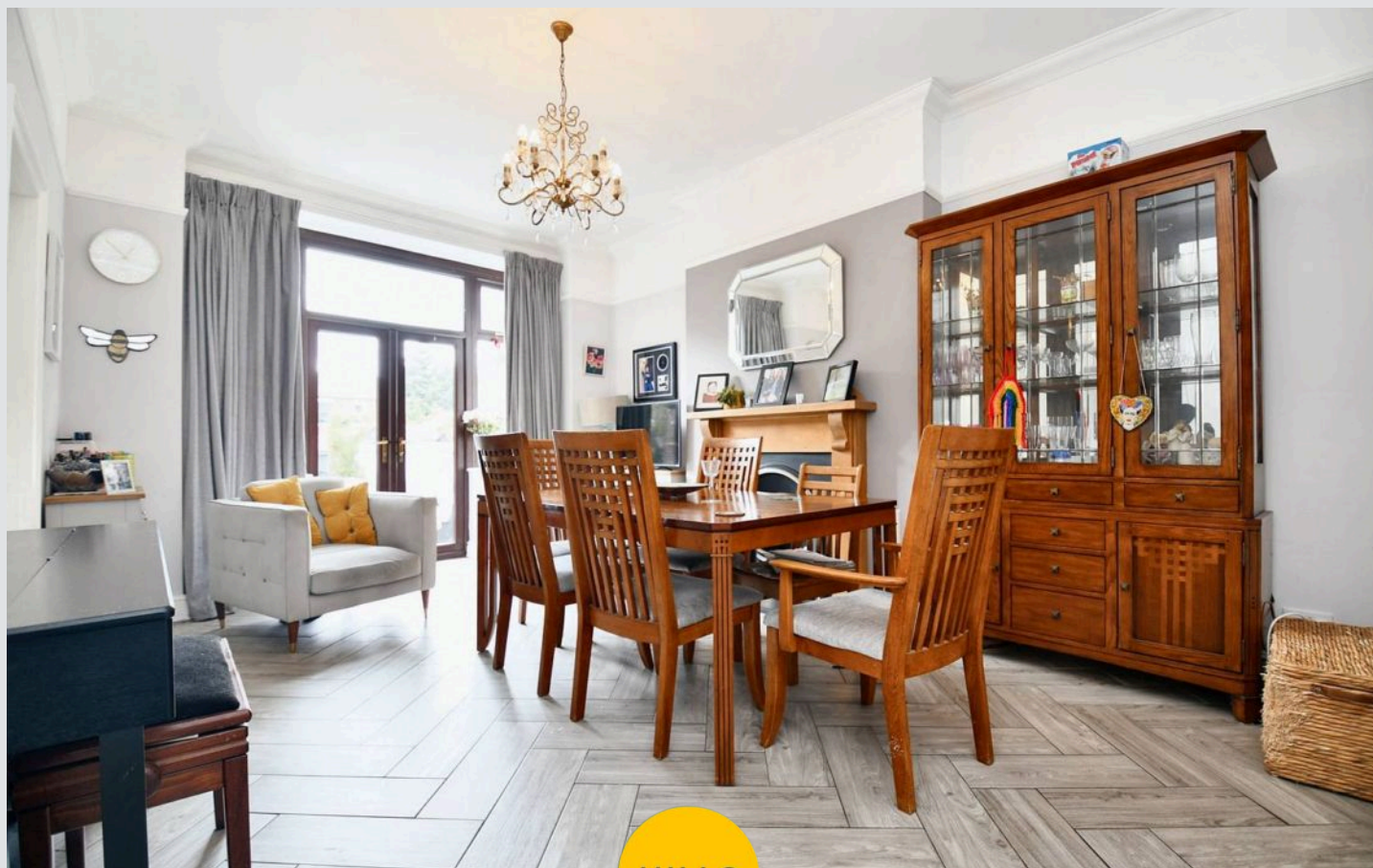
8' 4" x 6' 11" (2.53m x 2.11m)

Bathroom

8' 4" x 6' 0" (2.53m x 1.83m)

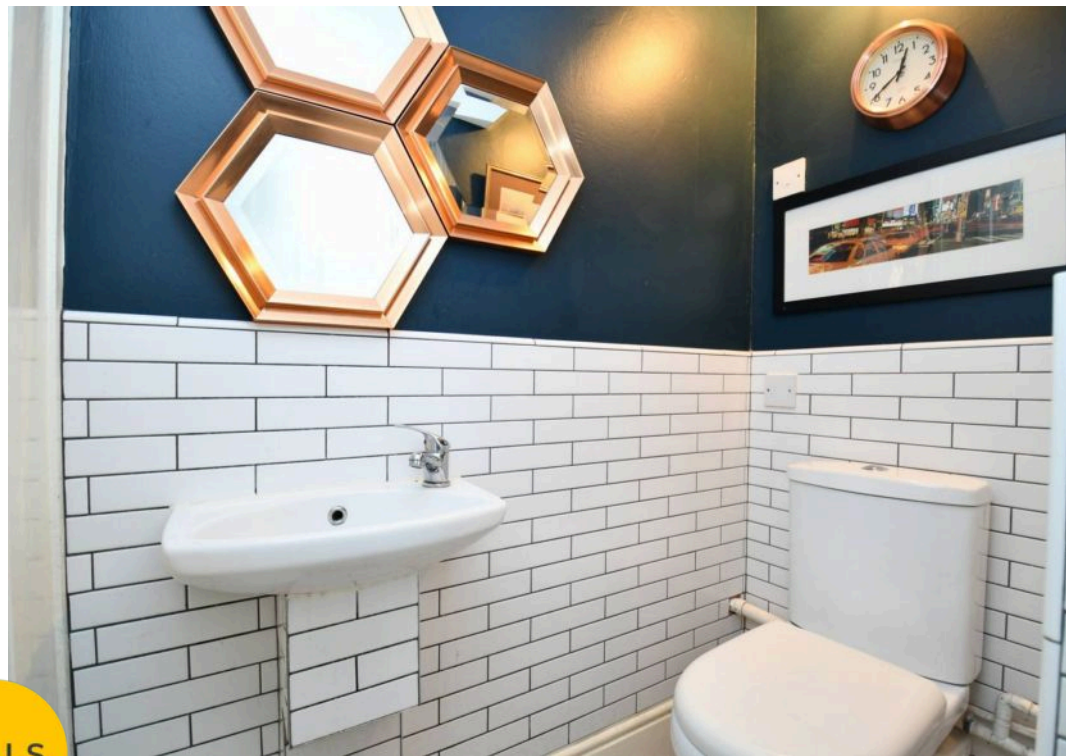
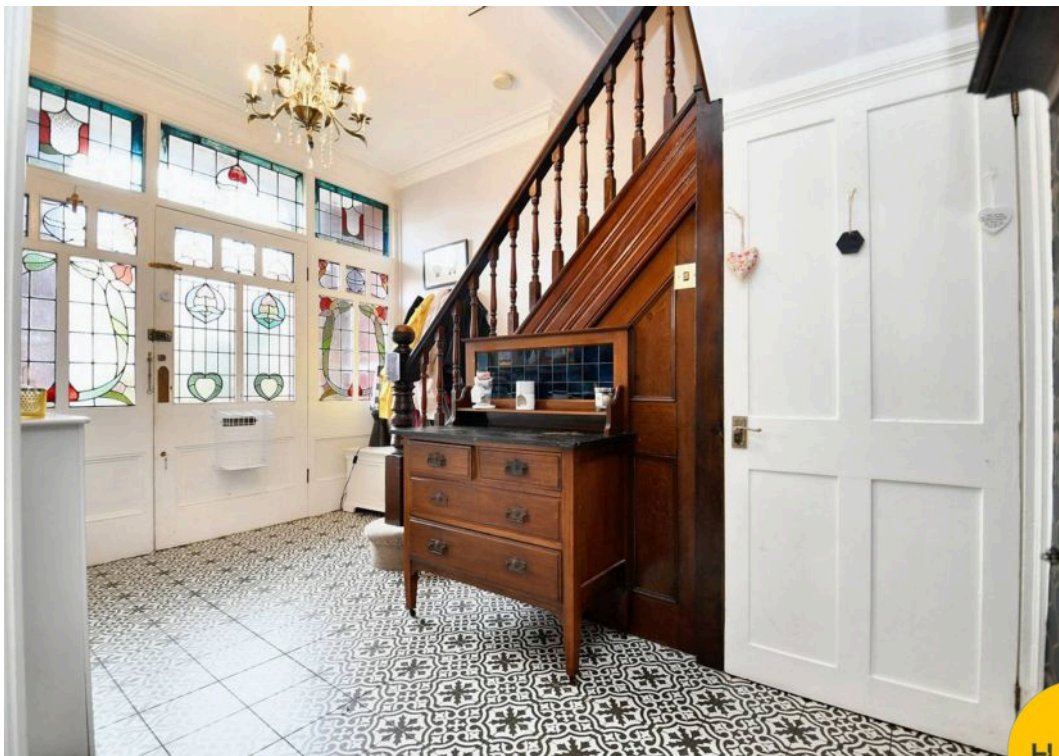
W.C.

4' 0" x 2' 7" (1.22m x 0.80m)

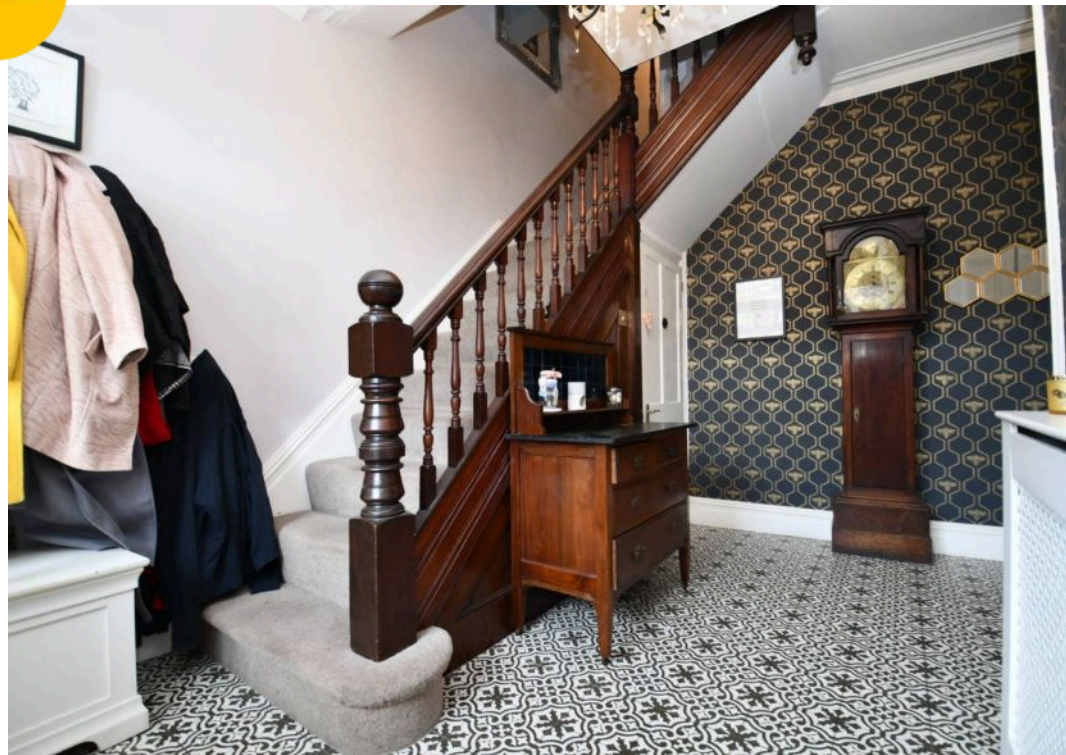
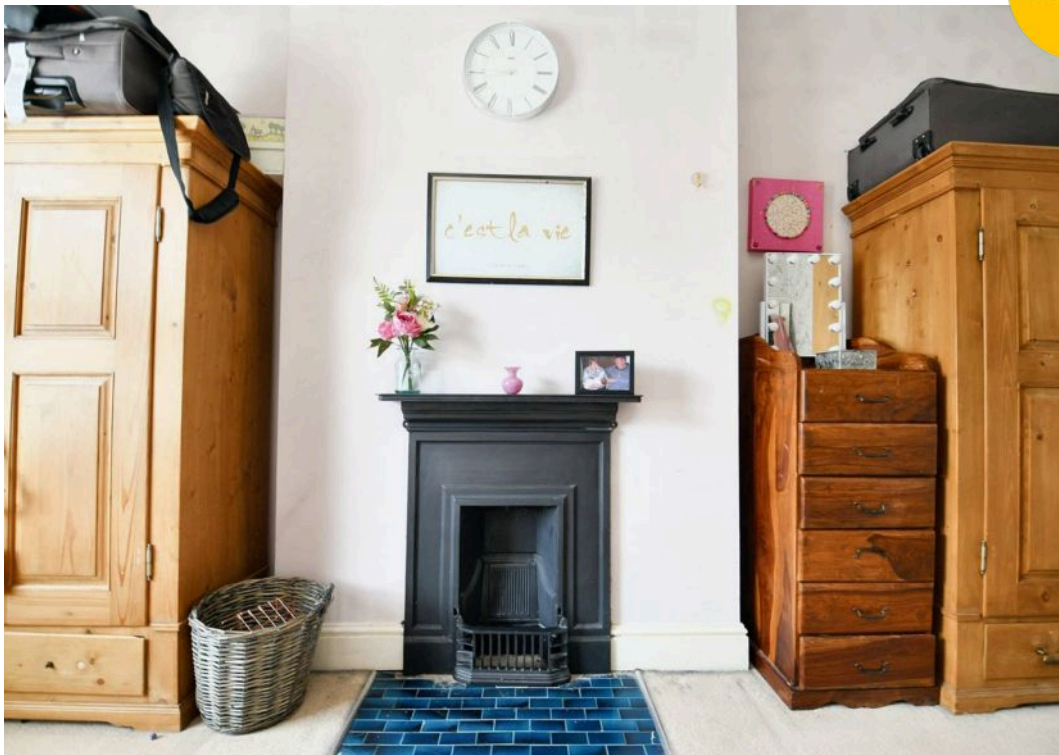


HILLS





HILLS





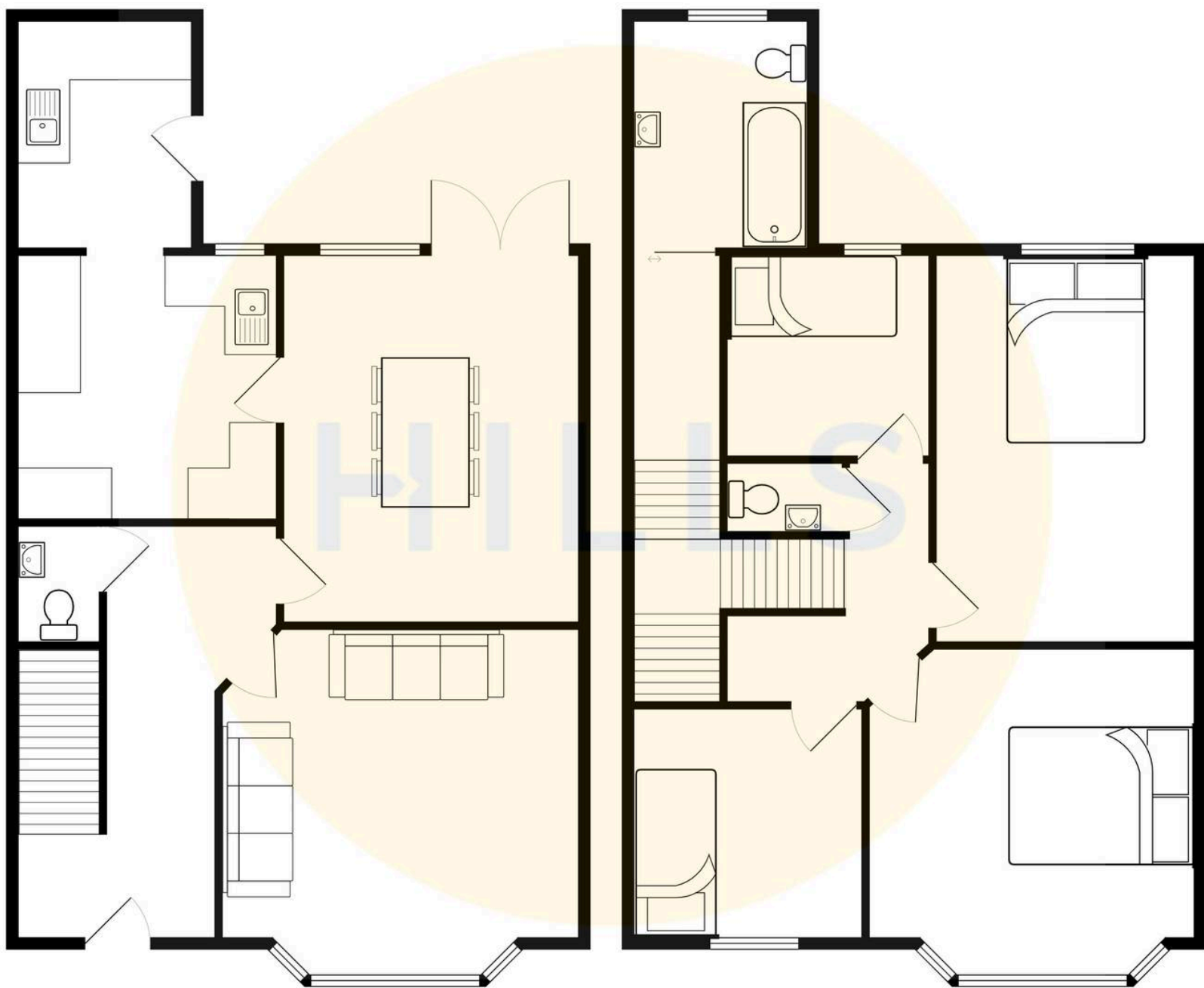
HILLS

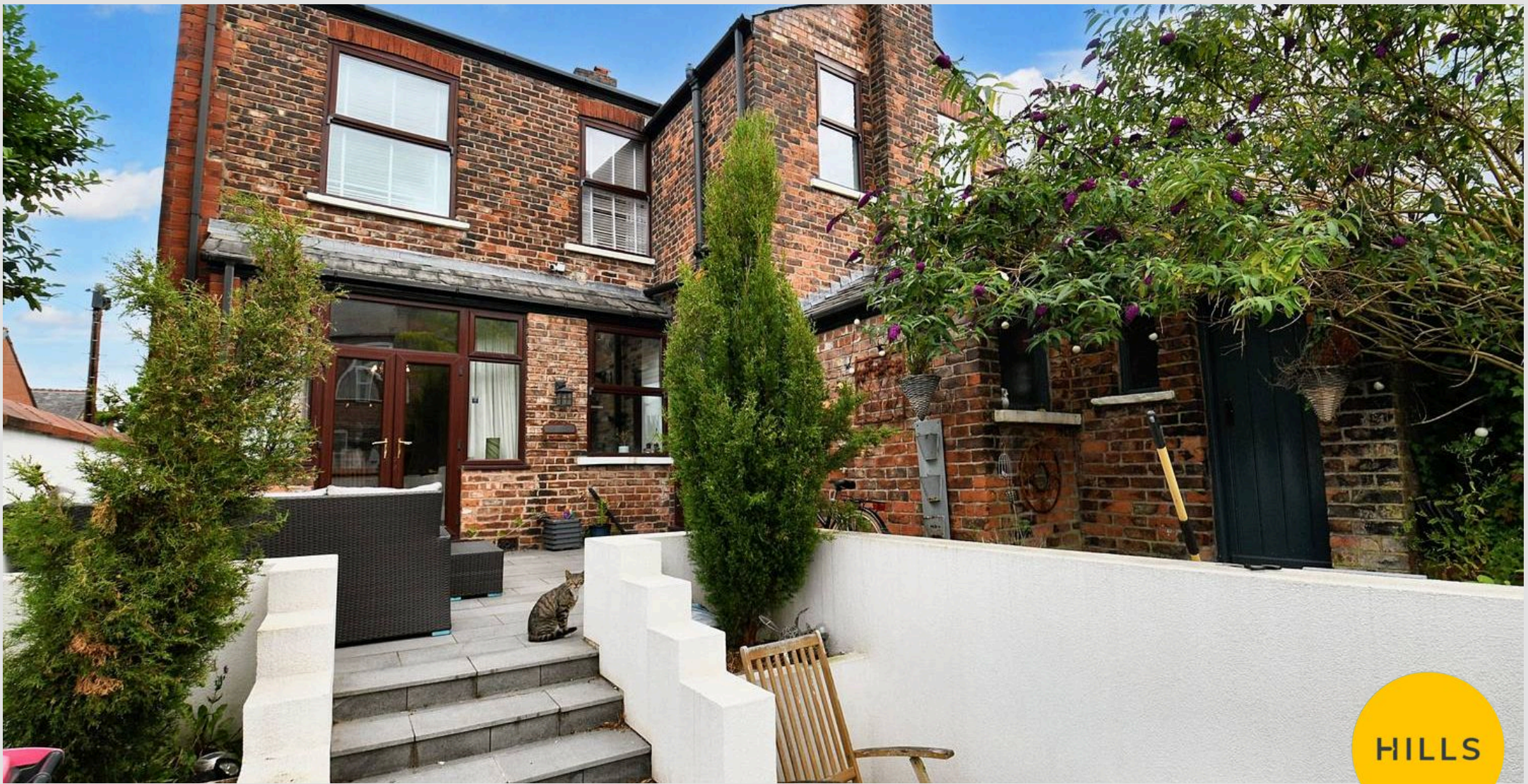




HILLS







Hills | Salfords Estate Agent

Hills Residential, Sentinel House Albert Street – M30 0SS

0161 707 4900

sales@hills.agency

www.hills.agency/



THE PROPERTY MISDESCRIPTIONS ACT 1991 The Agent has not tested any apparatus, equipment, fixtures and fittings or services and so cannot verify that they are in working order or fit for the purpose. A Buyer is advised to obtain verification from their Solicitor or Surveyor. References to the Tenure of a Property are based on information supplied by the Seller. The Agent has not had sight of the title documents. A Buyer is advised to obtain verification from their Solicitor. You are advised to check the availability of this property before travelling any distance to view. Every effort and precaution has been made to ensure these particulars are correct and not misleading but their accuracy is not guaranteed nor do they form part of any contract. If there is any point which is of particular importance to you, please contact us and we will provide any information you require. This is advisable, particularly if you intend to travel some distance to view the property. The mention of any appliances and services within these details does not imply that they are in full and efficient working order. These particulars are in draft form awaiting Vendors confirmation of their accuracy. These details must therefore be taken as a guide only.