



Victoria Crescent, Eccles

Manchester



In Excess of £560,000



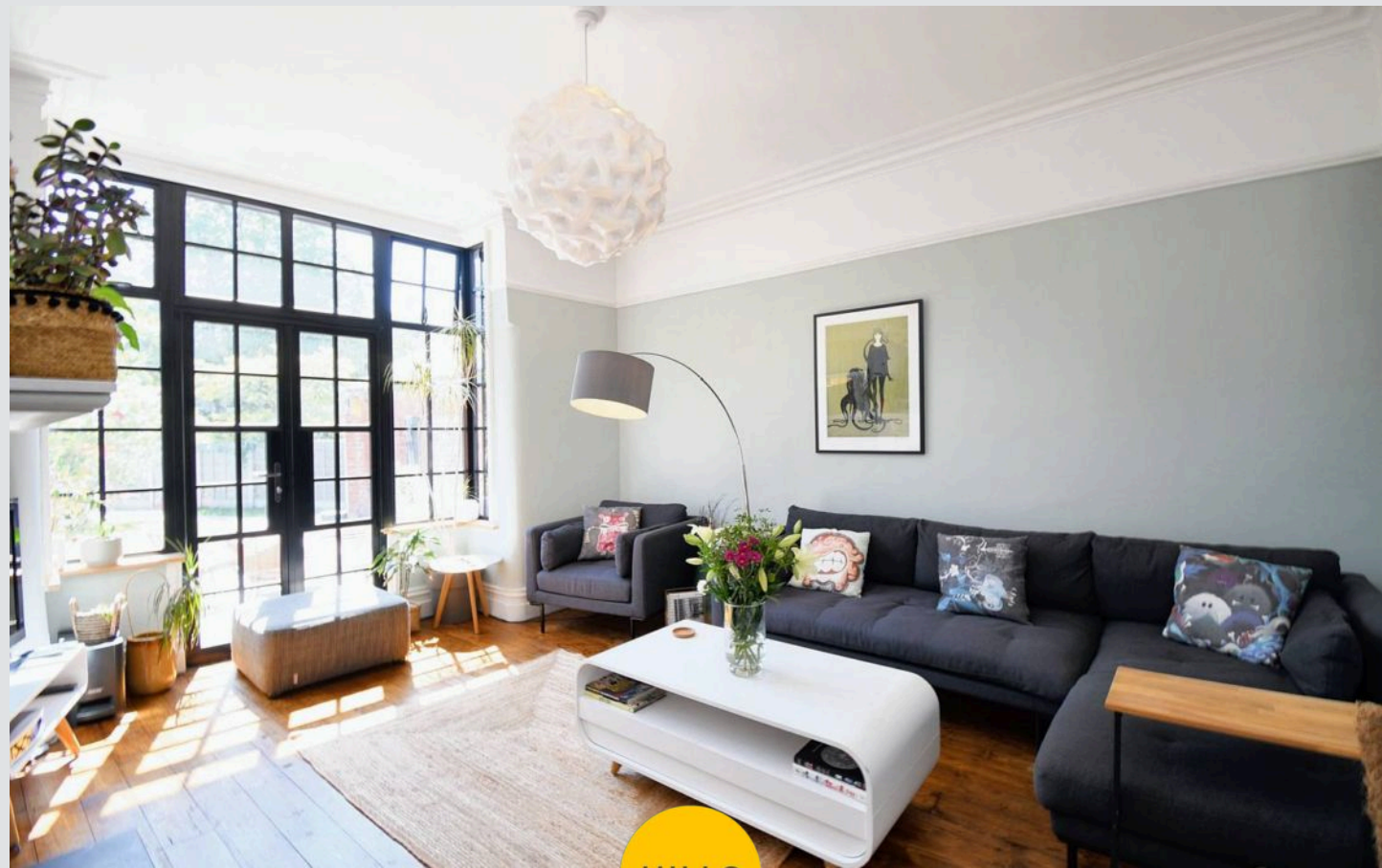
# Victoria Crescent

Eccles, Manchester

Stunning four bedroom semi-detached property laid beautifully over three floors and benefitting from a modern kitchen and bathroom, and an en-suite to the master bedroom!

Council Tax band: D

- Stunning period property laid over three fabulous floors and Located in the Desirable Ellesmere Park Area!
- Family Lounge overlooking the Rear Garden & Separate Dining Space
- Modern three piece bathroom suite and en-suite to the master
- Contemporary fitted kitchen
- Four generous double bedrooms!
- Off road parking for multiple cars
- Beautifully kept, private south facing rear garden
- Large loft room with stair case
- The Perfect Family Home Located Close to Highly Sought After Schooling
- Surrounded by a Plethora of Amenities and Transport Links





## Entrance Hallway

## Lounge

11' 9" x 13' 11" (3.58m x 4.24m)

## Kitchen / Diner

11' 8" x 17' 6" (3.55m x 5.33m)

## Landing

## Bedroom One

11' 8" x 10' 1" (3.55m x 3.07m)

## Bedroom Two

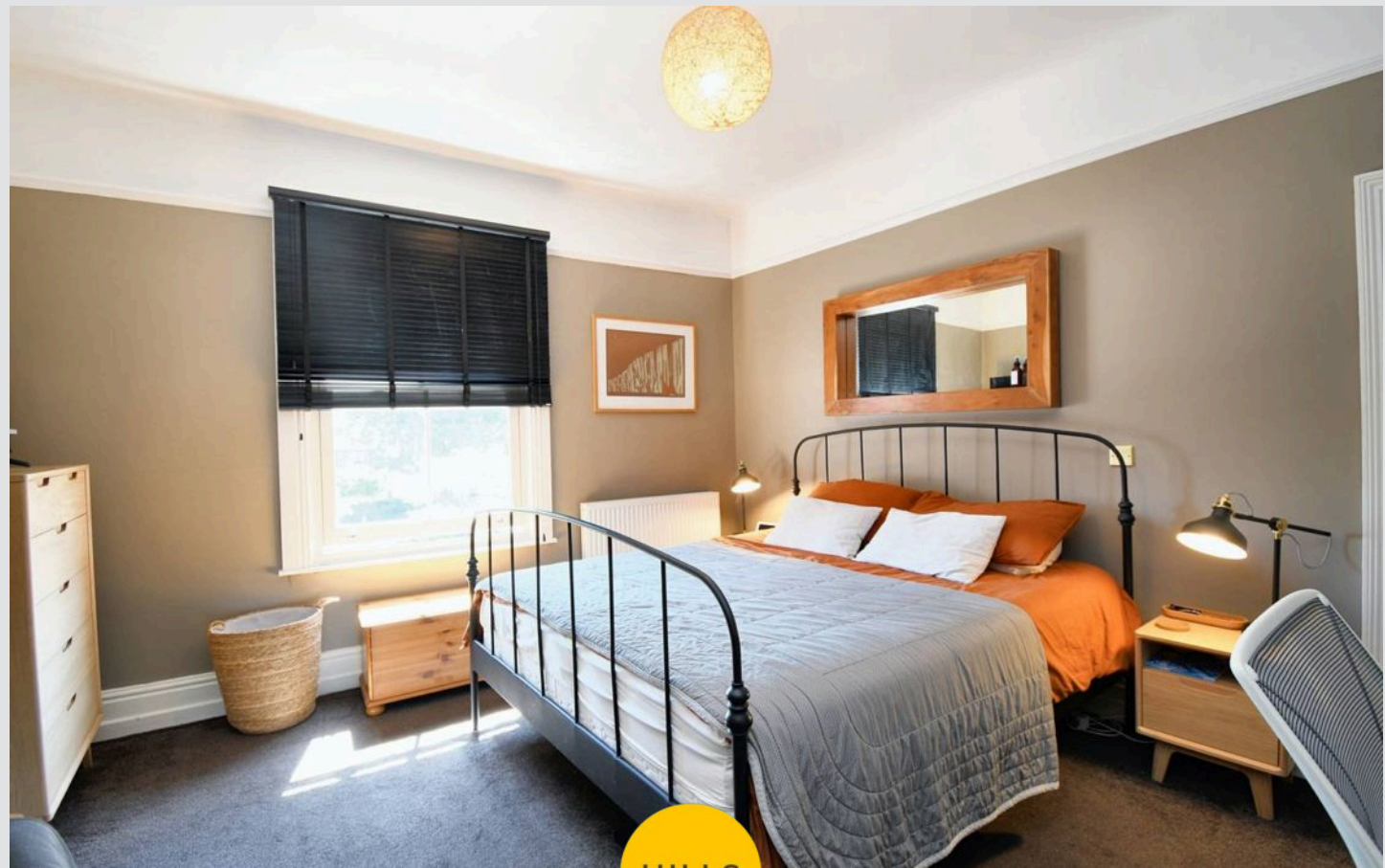
11' 11" x 11' 1" (3.63m x 3.38m)

## Bedroom Three

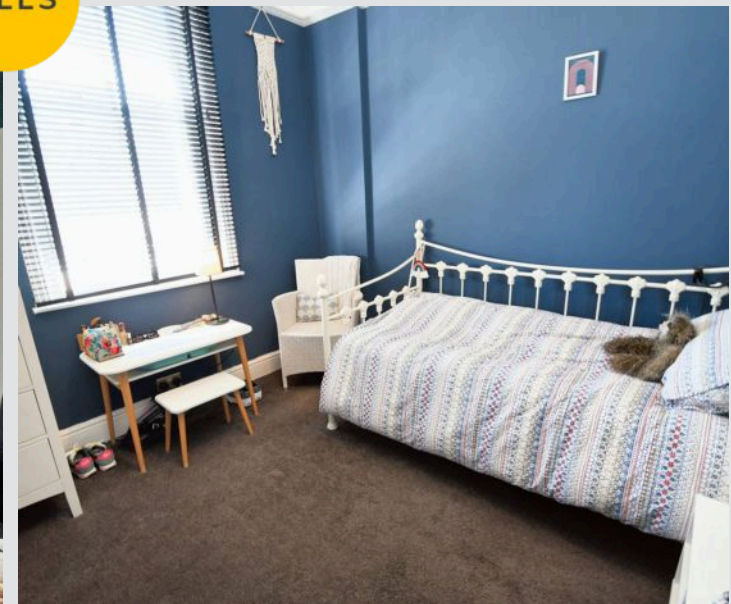
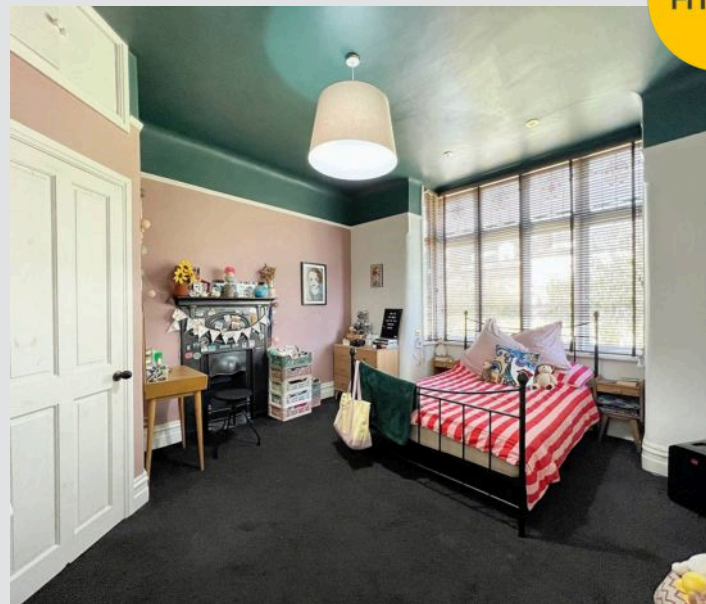
8' 4" x 7' 7" (2.54m x 2.31m)

## Bathroom

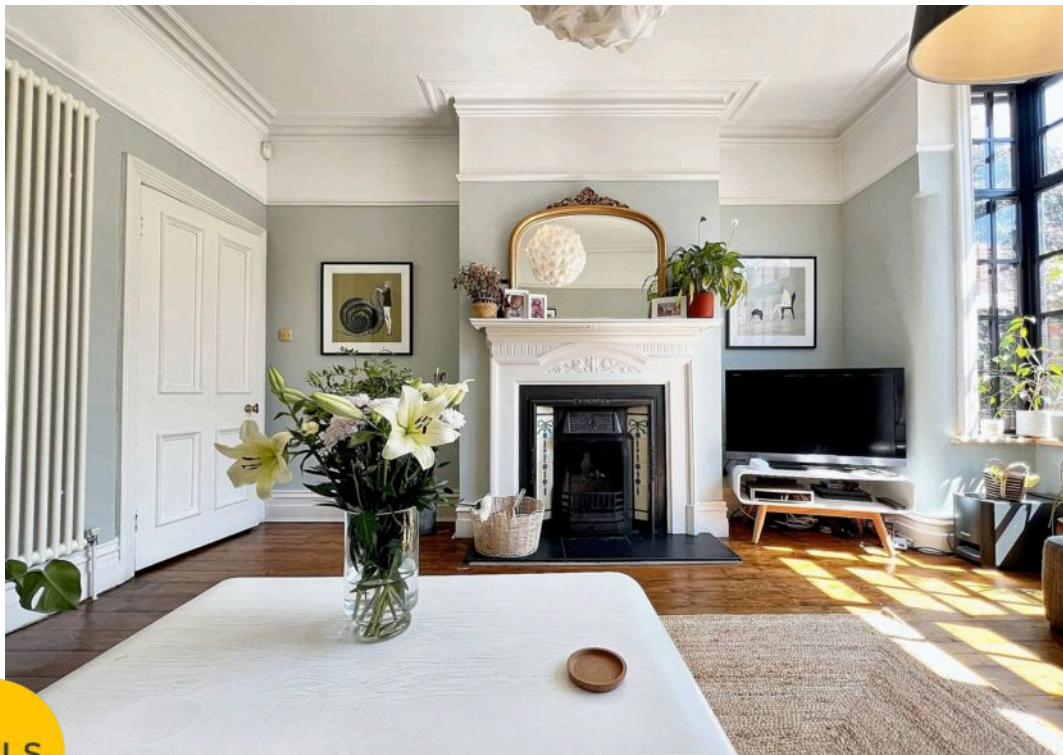
7' 6" x 7' 6" (2.28m x 2.28m)



HILLS







HILLS



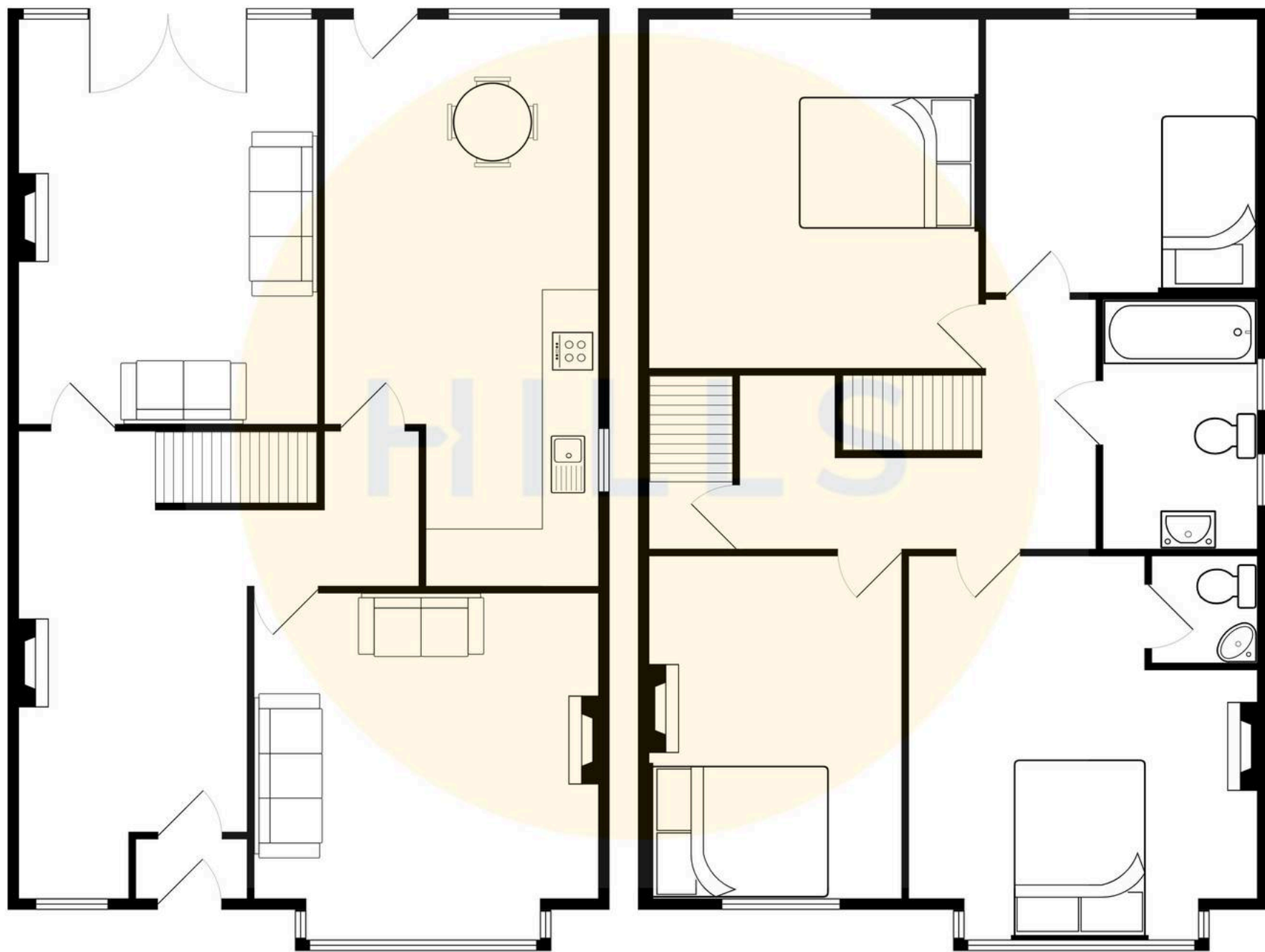




HILLS











## Hills | Salfords Estate Agent

Hills Residential, Sentinel House Albert Street – M30 0SS

0161 707 4900

[sales@hills.agency](mailto:sales@hills.agency)

[www.hills.agency/](http://www.hills.agency/)



THE PROPERTY MISDESCRIPTIONS ACT 1991 The Agent has not tested any apparatus, equipment, fixtures and fittings or services and so cannot verify that they are in working order or fit for the purpose. A Buyer is advised to obtain verification from their Solicitor or Surveyor. References to the Tenure of a Property are based on information supplied by the Seller. The Agent has not had sight of the title documents. A Buyer is advised to obtain verification from their Solicitor. You are advised to check the availability of this property before travelling any distance to view. Every effort and precaution has been made to ensure these particulars are correct and not misleading but their accuracy is not guaranteed nor do they form part of any contract. If there is any point which is of particular importance to you, please contact us and we will provide any information you require. This is advisable, particularly if you intend to travel some distance to view the property. The mention of any appliances and services within these details does not imply that they are in full and efficient working order. These particulars are in draft form awaiting Vendors confirmation of their accuracy. These details must therefore be taken as a guide only.