

Ribot Walk, Salford

Salford



£315,000

Ribot Walk

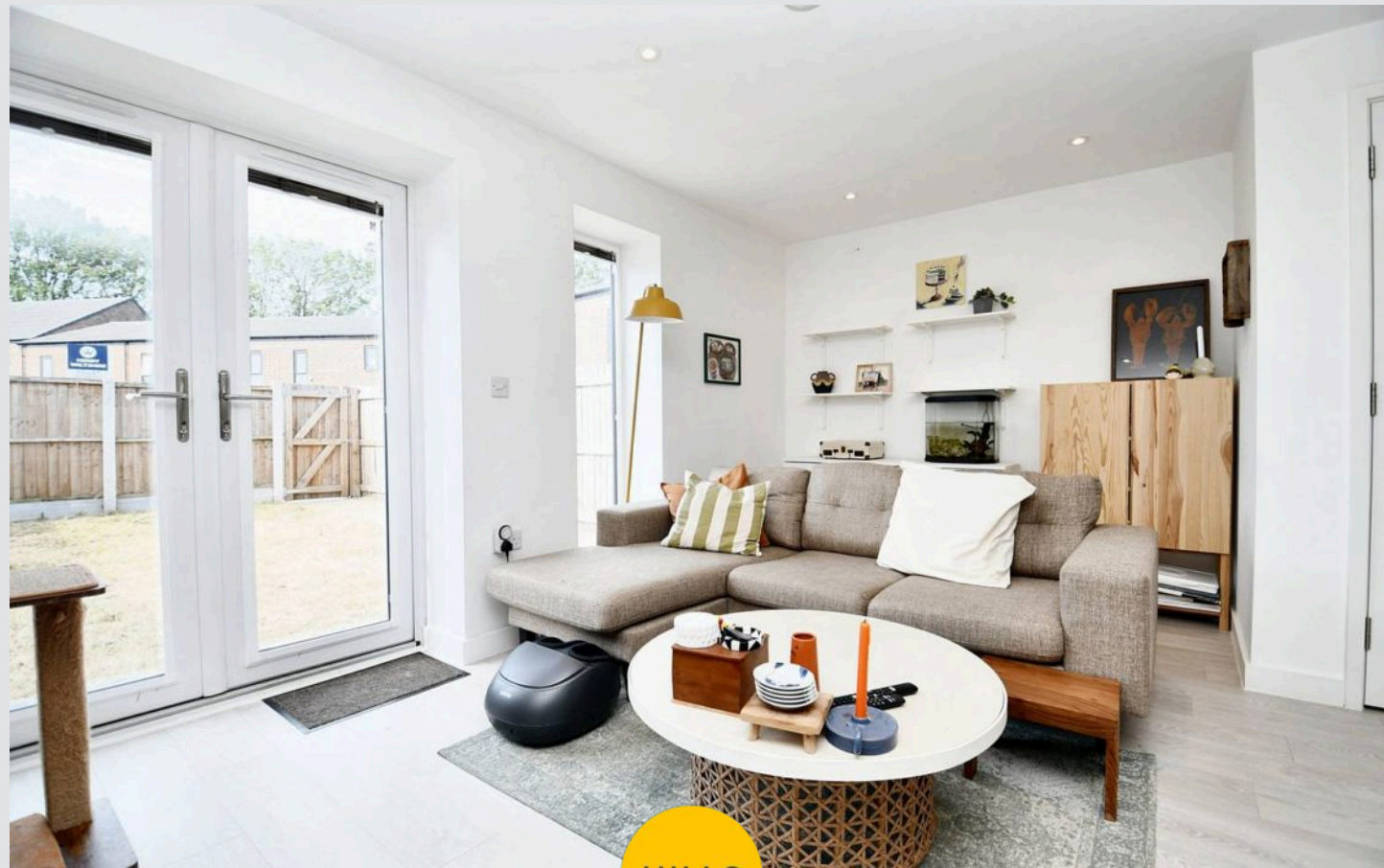
Salford

****Modern Three Bedroom Semi-Detached Property
Located in the Beautifully Presented Castle Irwell
Development! Featuring Peaceful Communal
Spaces, and a Juliette Balcony to the Main
Bedroom!****

Council Tax band: B

Tenure: Freehold

- Modern Three Bedroom Semi-Detached Property
- Located on the Beautifully Presented Castle Irwell Development
- Open Plan Living, Dining and Kitchen Area with Modern Units and Patio Doors to the Rear
- Benefits from a Downstairs W/C
- Three Well-Proportioned Bedrooms
- Modern Three-Piece Bathroom
- Benefits from a Gated Parking Space
- Close to Transport Links into Salford Quays, Media City and Manchester City Centre
- Beautiful Communal Spaces and Access to Castle Irwell Central Park
- Viewing is Highly Recommended!



HILLS



Entrance Hallway

W.C.

6' 10" x 2' 10" (2.08m x 0.86m)

Kitchen

9' 11" x 8' 4" (3.02m x 2.55m)

Lounge Diner

18' 2" x 16' 1" (5.54m x 4.91m)

Landing

Bedroom One

12' 1" x 10' 7" (3.69m x 3.23m)

En suite

6' 9" x 2' 11" (2.05m x 0.89m)

Bedroom Two

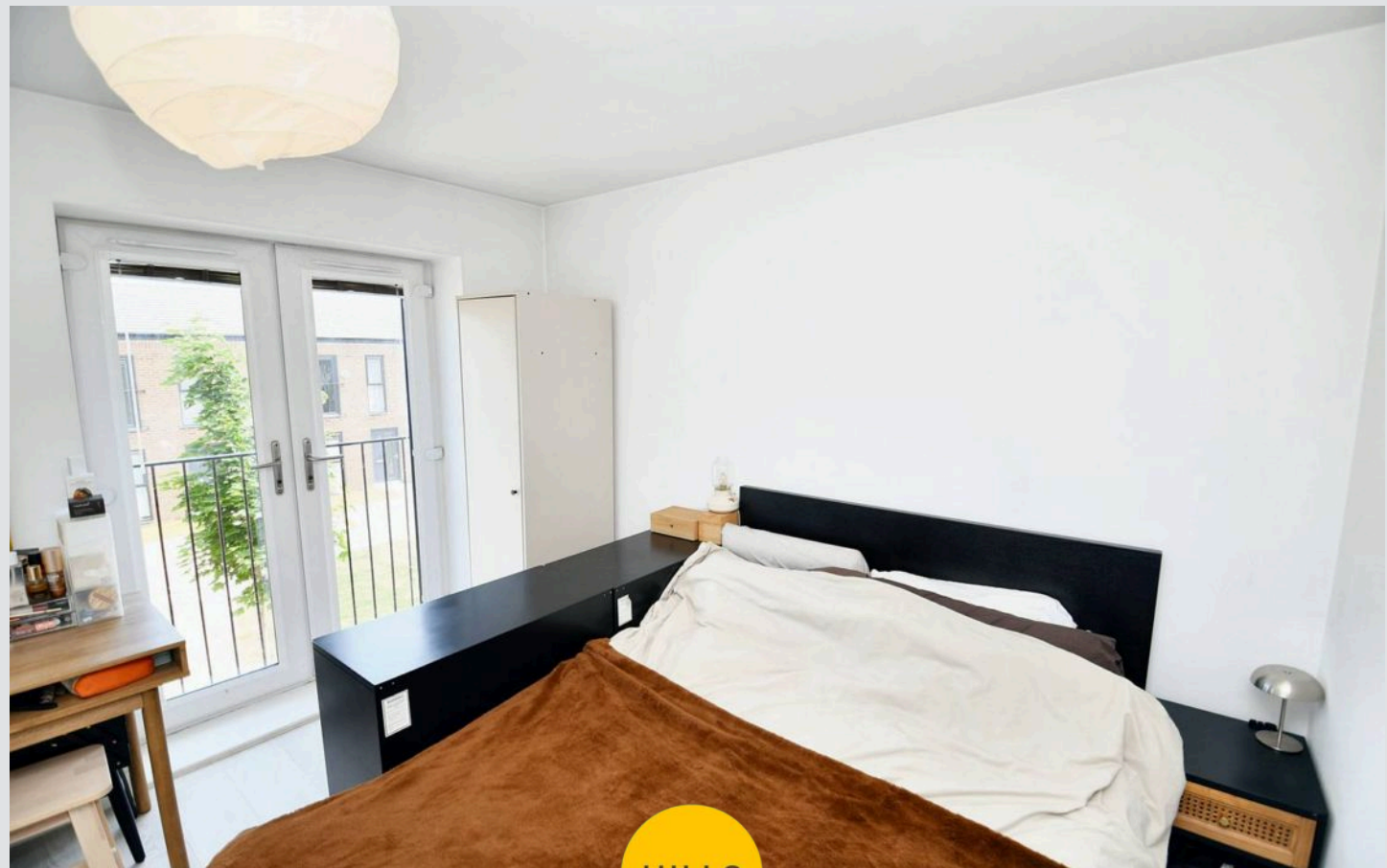
13' 1" x 8' 6" (3.98m x 2.59m)

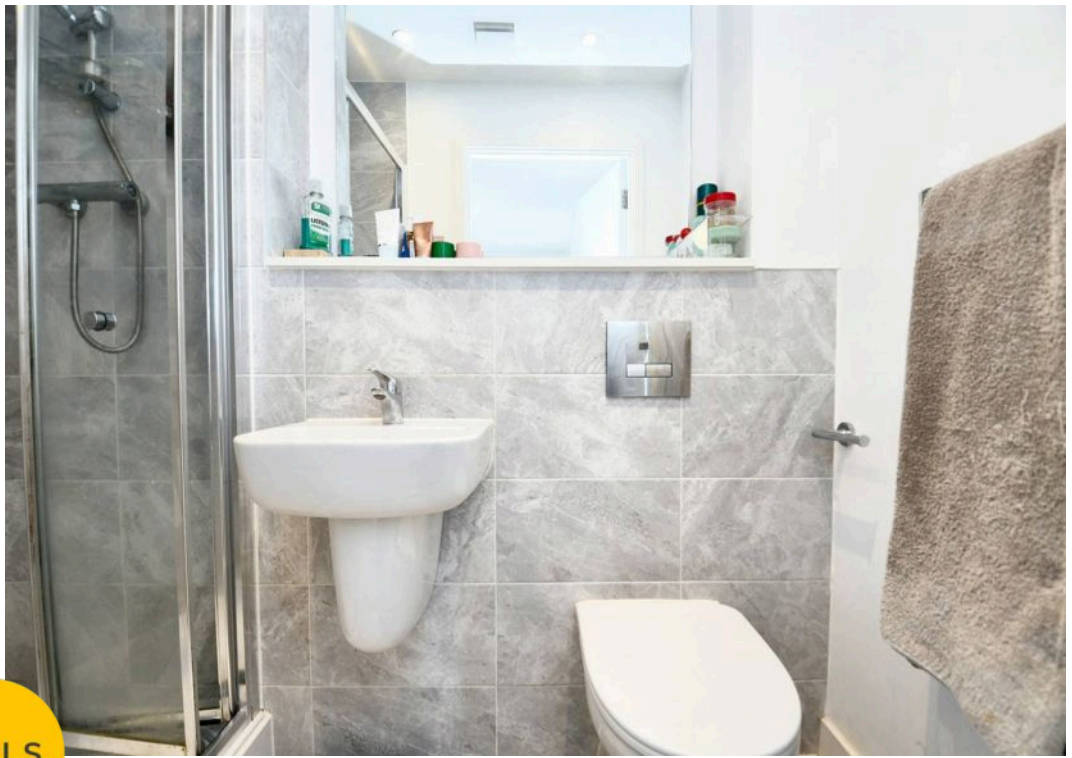
Bedroom Three

9' 4" x 7' 5" (2.84m x 2.27m)

Bathroom

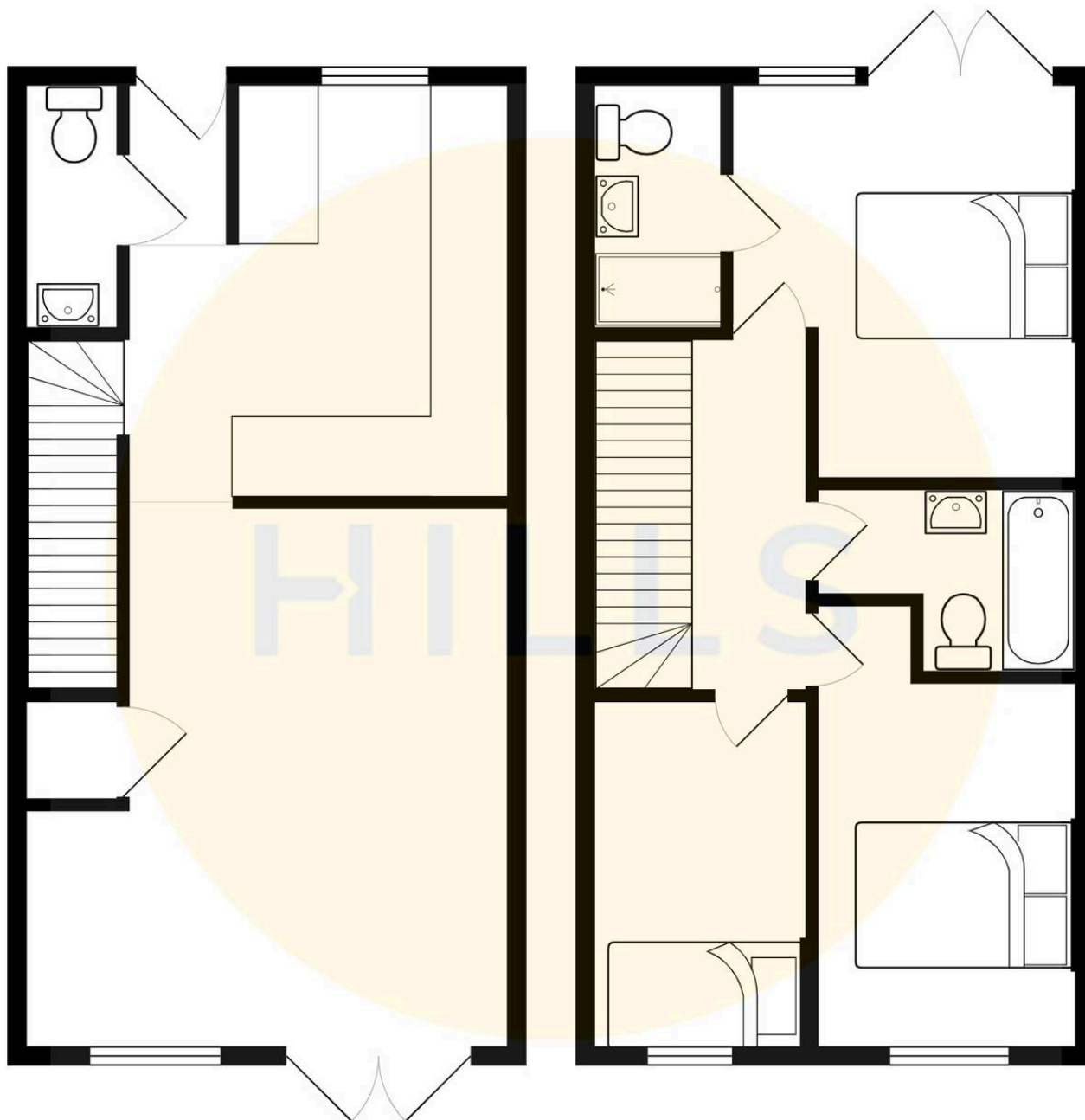
8' 6" x 5' 7" (2.58m x 1.70m)





HILLS







Hills | Salfords Estate Agent

Hills Residential, Sentinel House Albert Street – M30 0SS

0161 707 4900

sales@hills.agency

www.hills.agency/



THE PROPERTY MISDESCRIPTIONS ACT 1991 The Agent has not tested any apparatus, equipment, fixtures and fittings or services and so cannot verify that they are in working order or fit for the purpose. A Buyer is advised to obtain verification from their Solicitor or Surveyor. References to the Tenure of a Property are based on information supplied by the Seller. The Agent has not had sight of the title documents. A Buyer is advised to obtain verification from their Solicitor. You are advised to check the availability of this property before travelling any distance to view. Every effort and precaution has been made to ensure these particulars are correct and not misleading but their accuracy is not guaranteed nor do they form part of any contract. If there is any point which is of particular importance to you, please contact us and we will provide any information you require. This is advisable, particularly if you intend to travel some distance to view the property. The mention of any appliances and services within these details does not imply that they are in full and efficient working order. These particulars are in draft form awaiting Vendors confirmation of their accuracy. These details must therefore be taken as a guide only.